

---

## Guide for

# MediaStore Administration tool

---

*All Rights Reserved, including all rights concerning reproduction, copying or any other use or transmission of this document and its contents or parts of it. No part of this publication may, no matter in what form, be reproduced without written permission by Metalogix Software, passed on to third parties, edited by electronic retrieval systems, copied, distributed or used for public presentations. Metalogix Software reserves the right to change and update the content at any time. All data shown on screenshots is solely for demonstration purposes of the software. Metalogix Software is not responsible for this content.*

*Trademark Archive Manager*

*Microsoft®, Microsoft Windows NT® and the names of other Microsoft products are registered trademarks of Microsoft Corporation.*

*All Rights Reserved. Other product names are being used for identification purposes of products and can be registered trademarks of the according manufacturers.*

## Table of Contents

<b>Introduction .....</b>	<b>3</b>
“Jukebox, Harddisk, Network” MediaStore.....	4
Simple Path MediaStore.....	20
EMC-Centera MediaStore .....	26
IBM-Tivoli MediaStore .....	30
Saperion MediaStore.....	34
HP Riss MediaStore .....	37
<b>How to modify an existing MediaStore .....</b>	<b>40</b>

## Introduction

All your archived emails and their attachment will be kept in the HSM store. Thus the location of the HSM store needs to be a drive with plenty of free space to keep the stored files. The HSM Store is supported on HDD/Jukebox Systems (AMASS, Pegasus, PoINT) / Tivoli / EMC Centera / DVD / CD\_ROM / SAN / NetApp / JVC / HP RISS / HP FSE / NAS / Plasmon etc.

In this guide you will be shown how to create different types of MediaStore (HSM store) and how to configure them by using PamMediaStoreAdministration tool. Should there be some MediaStores already created, PamMediaStoreAdministration tool is able to modify an existing MediaStore, or delete it, or even connect to a remote computer if a MediaStore is placed there.

Six basic MediaStore types:

- Jukebox, Harddisk, Network
- Simple Path  
**NOTE:** If you have a harddisk or raid-system, and you do not need directories with a specific size (e.g 5 GB) always use **Simple Path** store-type.
- EMC-Centera
- IBM-Tivoli
- Saperion
- HP Riss

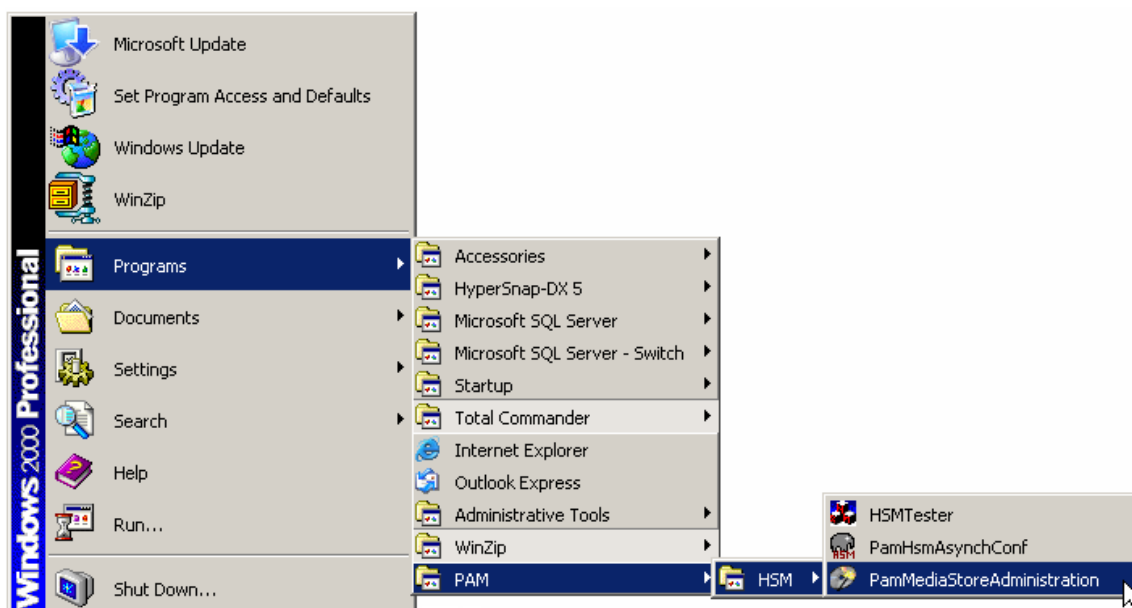
Following six sections contain comprehensive description on how to create these MediaStores.

### “Jukebox, Harddisk, Network” MediaStore

To create this type of MediaStore you basically need the following information: the UNC-path to HDD or a jukebox (AMASS, PEGASUS, or POINT) which is prepared for usage, and a second path if, for security reasons, you want the files to be archived at some other location (i.e. under some other path) as well.

To create a Jukebox, Harddisk or Network MediaStore:

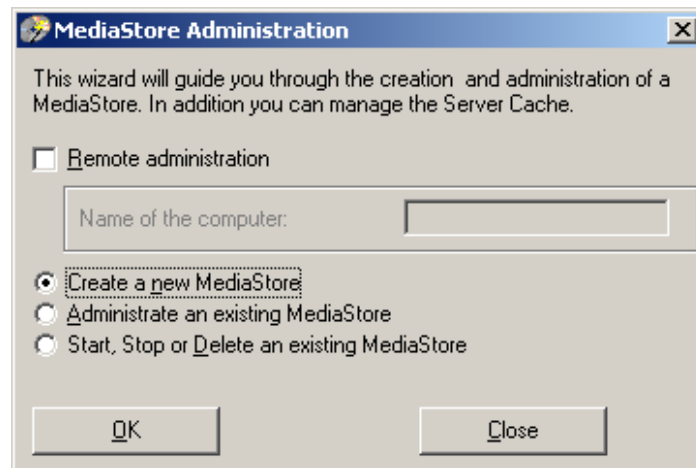
1. Click **Start/Programs/PAM/HSM/PamMediaStoreAdministration**.



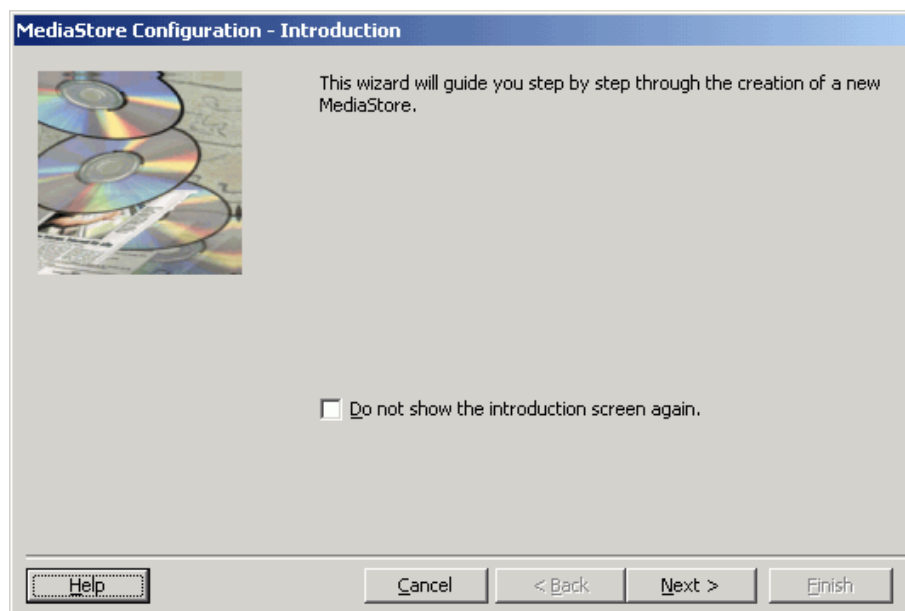
2. In the **MediaStore Administration** window select the **Create a new MediaStore** option. Then click **OK**.

**NOTE:** The other options are to be used as follows:

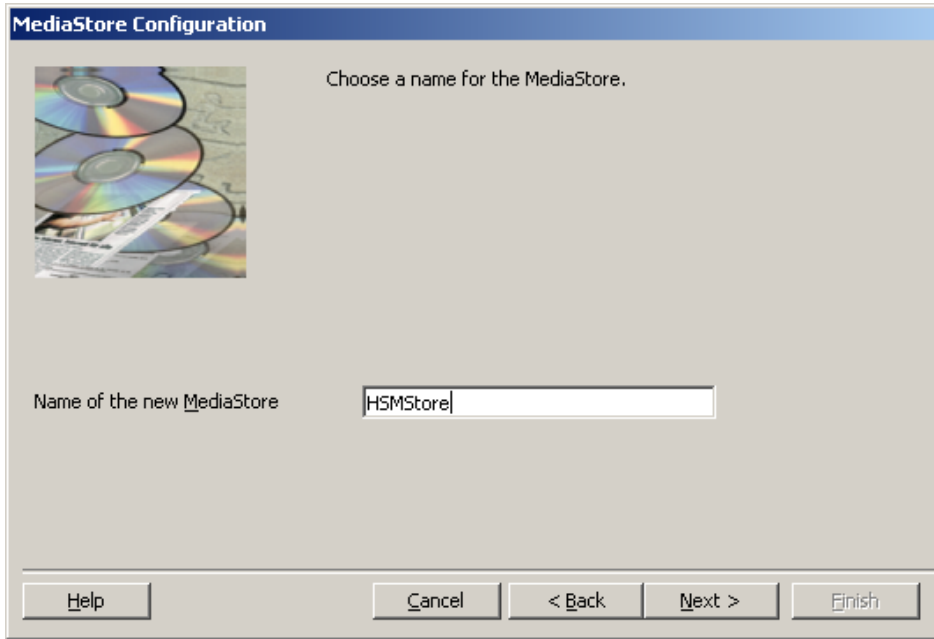
- a) If you select the **Administrate an existing MediaStore** option you will be able to modify an existing MediaStore. Please note that a MediaStore cannot be modified when being used.
- b) If you select the **Start, Stop or Delete an existing MediaStore** option you will be able to start, stop or delete an existing MediaStore respectively.
- c) If you have an existing MediaStore on another computer, select the **Remote administration** check box. With this feature you can connect to the respective remote computer and administer the MediaStore remotely.



3. Click **Next**.



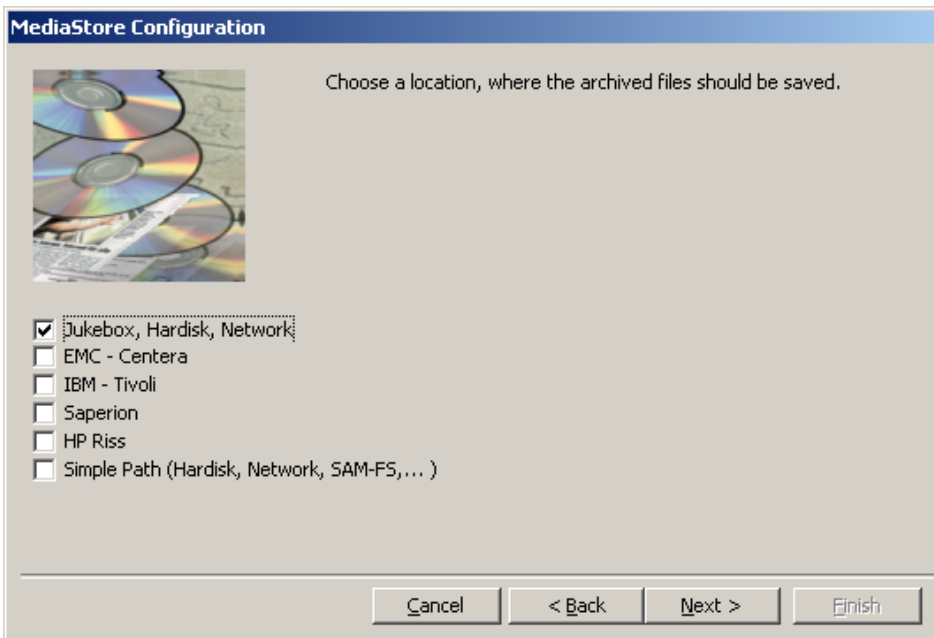
4. In the **MediaStore Configuration** window enter the name for your new MediaStore in the **Name of the new MediaStore** text box. Then click **Next**.



5. To configure the Jukebox, Harddisk or Network MediaStore, select the relevant check-box. Then click **Next**.

**NOTE:** If you have a harddisk or raid-system, and you do not need directories with a specific size (e.g 5 GB) always use **Simple Path** store-type (see “Simple Path MediaStore” section further in this manual).

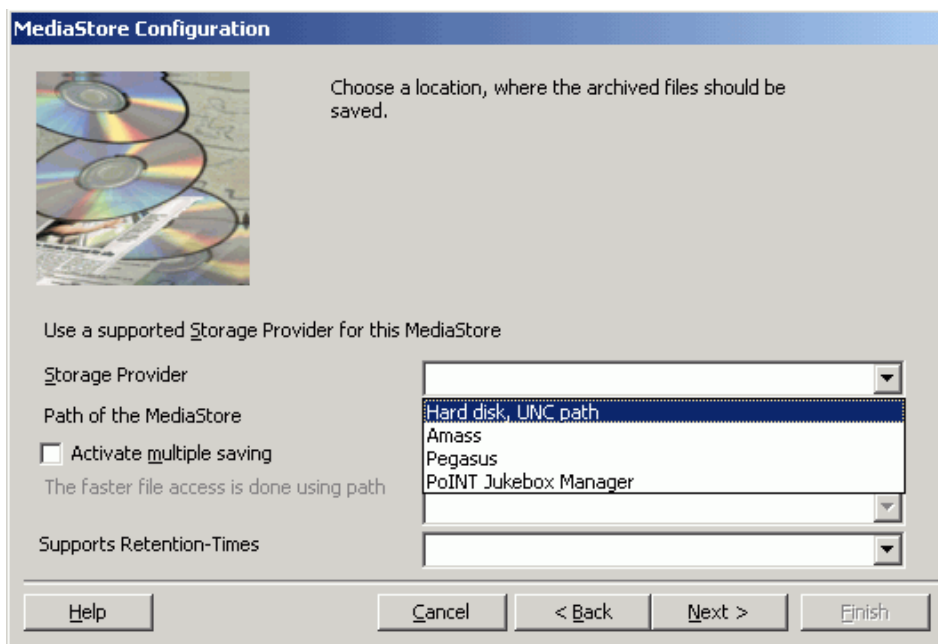
Click **Next**.



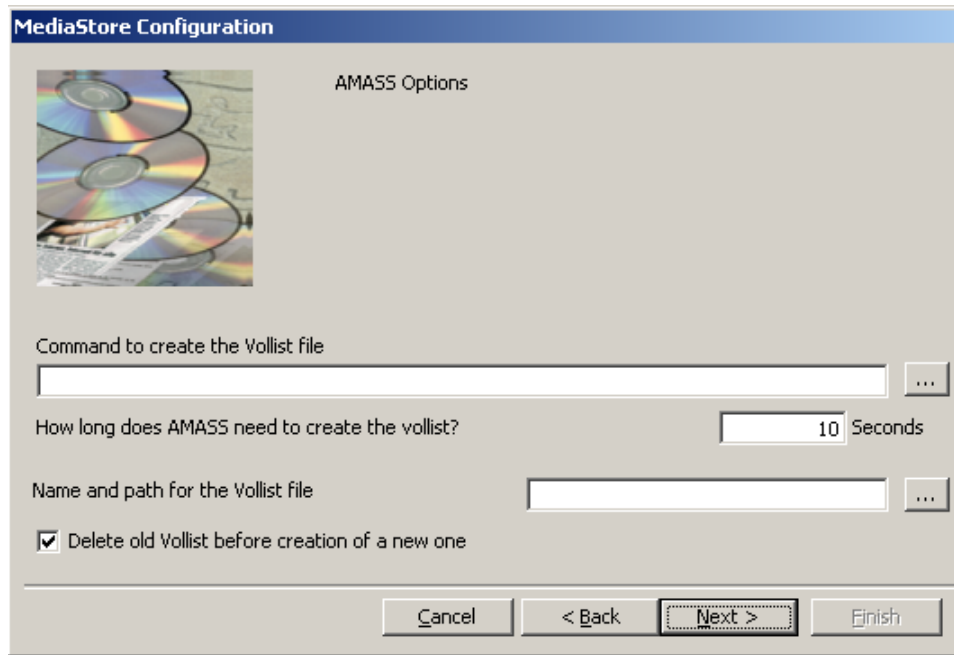
- In the **Storage Provider** drop-down list select **Hard disk or UNC path** (in the case that your store will be placed on a hard-disk drive or share).

Or select the appropriate storage provider, i.e. the manufacturer of your jukebox software: **Amass** (see the **NOTE** below), **Pegasus** or **POINT Jukebox Manager**.

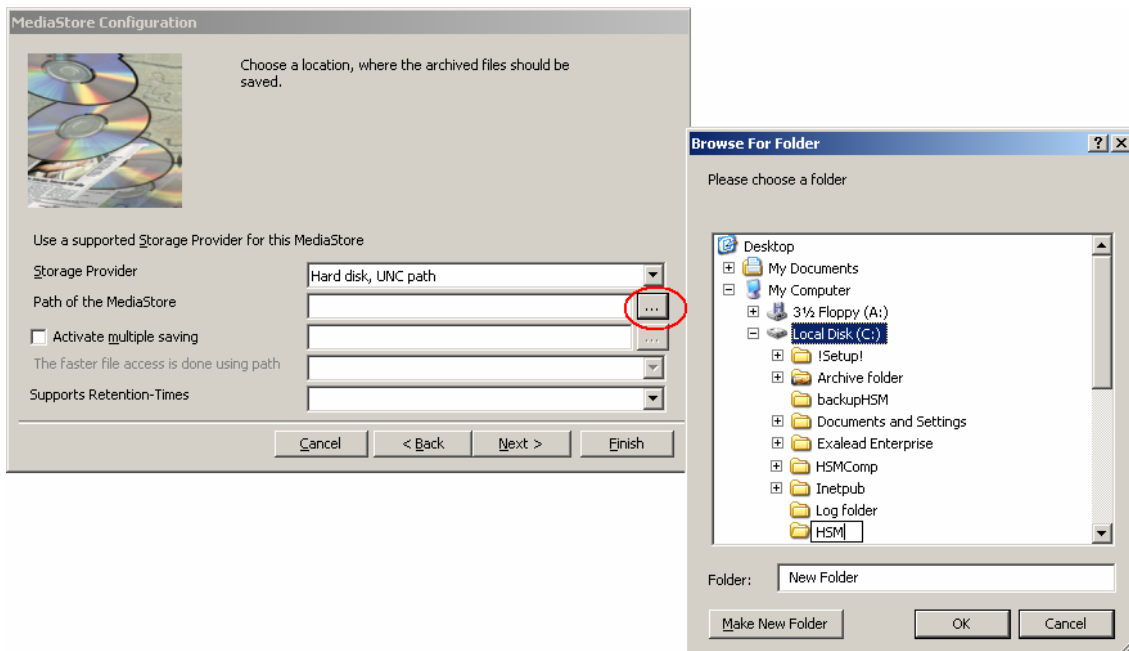
Please note that some settings available for Harddisk or UNC path may not be applicable to other storage types. (Not applicable settings will be grayed out.)



**NOTE:** After Amass is selected as a storage provider and all settings are specified on the current dialog as described further, Amass specific options have to be defined on a special dialog (see the following picture). Amass is Jukebox management software for UNIX. For getting the size of each media there is a command-line-program called “vollist”. The user has to create a batch-file which calls this command on UNIX and creates a file with the result of this command that the store can read. Normally customers do this via a RSH – “remote shell” execute.

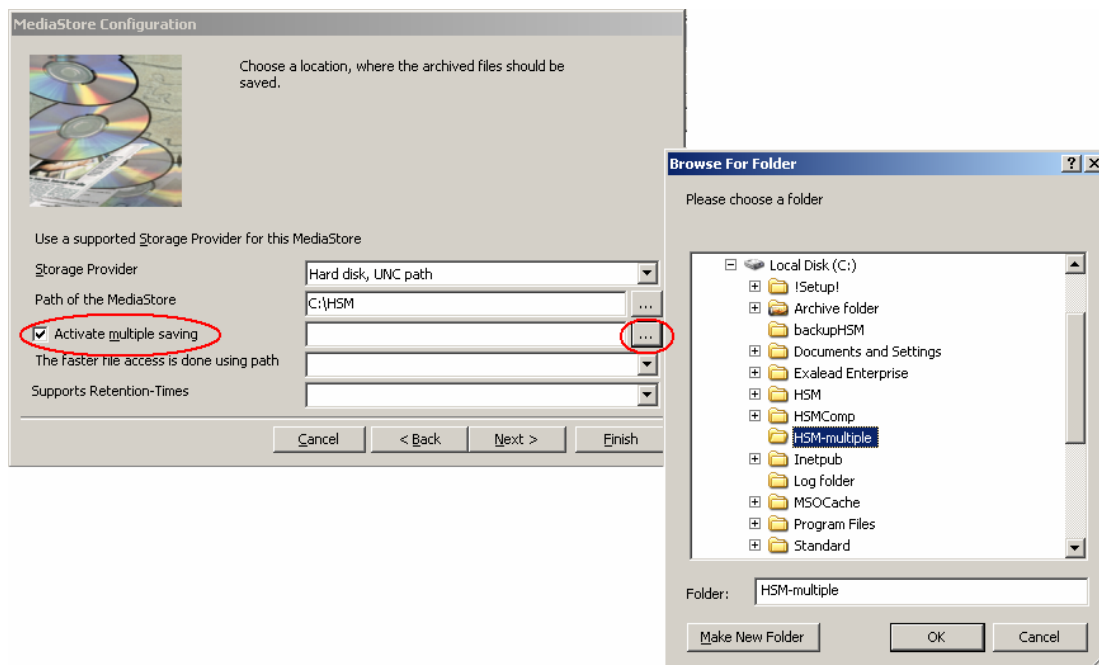


- Click on the **browse** button next to the **Path of the MediaStore** box to choose a location of the desired MediaStore. Click **OK**.  
**NOTE:** To create a new folder, use the **Make New Folder** button. Enter the name for this new folder, e.g. *HSM* and click **OK**.

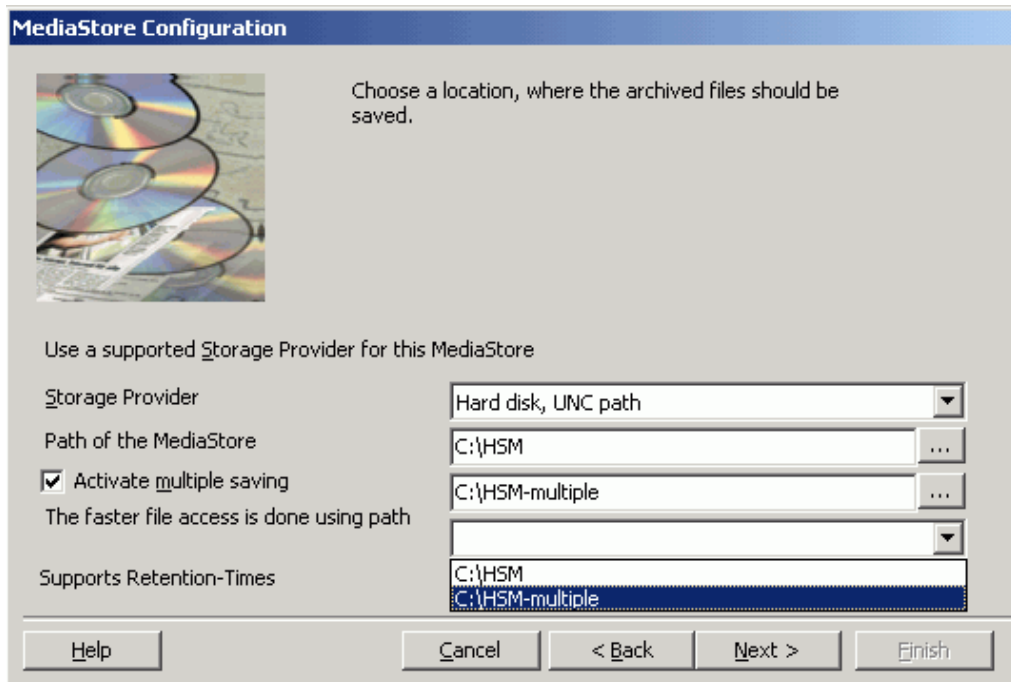


- Should you wish to archive files simultaneously to some other location as well, select the **Activate multiple saving** check box. Use the **browse** button, similarly as above, to specify a second path.  
 The files will be archived to this second location, too.

**NOTE:** The second path can be anything that is reachable by a drive-letter or a network share, something accessible with Windows Explorer. In normal usage the first path is a slow MediaStore (e.g. Pegasus Jukebox), and the second path is a large SAN (e.g. local RAID or Harddisk). For fast access you should use SAN because it is much faster.

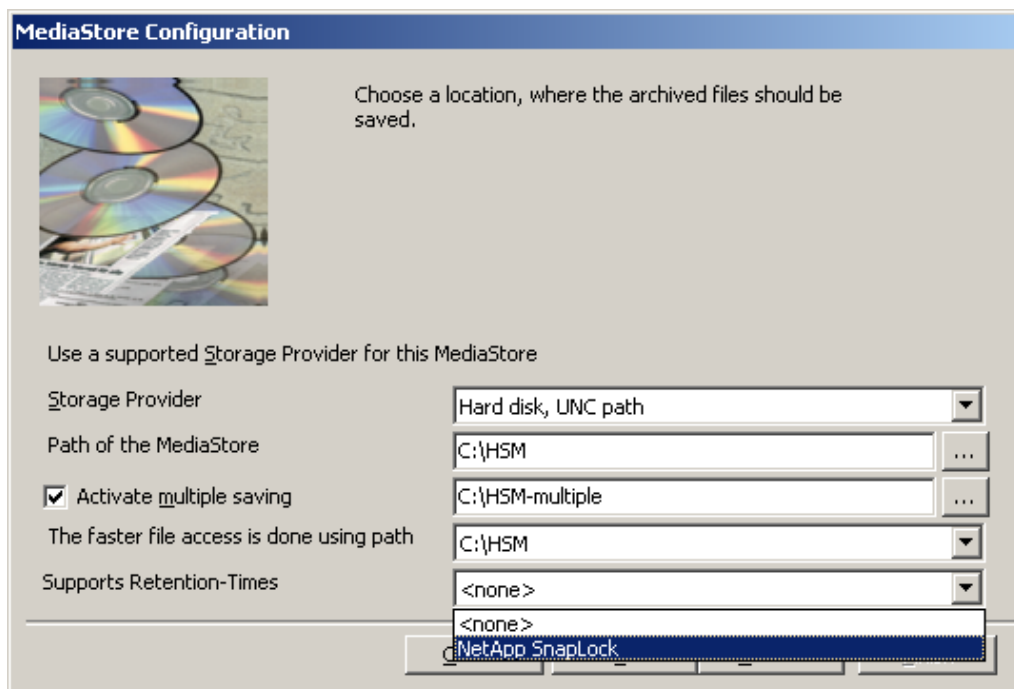


9. In the case that you activated multiple saving, click on the down arrow next to the **The faster file access is done using** path drop-down list and select the faster access path.



10. If you are using NetApp and want to use SnapLock, select the **NetApp SnapLock** option in the **Supports Retention-Times** down-drop box to secure the compliancy with law regulations regarding archiving of electronic documents. (e.g. HIPAA, OFRS, COSO etc.)

Click **Next**.



11. In the case that you activated multiple saving the following window gets displayed. Here you may configure multi-storing.

The **Multiple Saving** section:

Should you select the **From the media with number** check-box, then you may choose from which numbered medium multiple saving was activated.

Should you select the **For the last media** check box, then you may enter a number which will specify up to which media multiple saving would be done.

The **Media-Switch** section:

In the **Action when switching media** text-box you may enter a command or a batch file that will be executed when switching between media.

In the **maximum time for the action (ms)** text-box specify a maximum time frame that you want to set for the action.

Should you select the **check and delete oldest medium which was saved multiple** check box, then you may enter a time in the **maximum time for the action (ms)** text box. This specifies a maximum time frame that is set for the action.

Then click **Next**.

12. On the following page you need to configure media names. You also need to specify the total number of media in this MediaStore to be used by PAM4files.

If you select the **Create file and folder-names using 8.3 convention** check-box then the file-name will be truncated to 8 characters and extension to 3 characters, provided that the underlying system doesn't support long filenames.

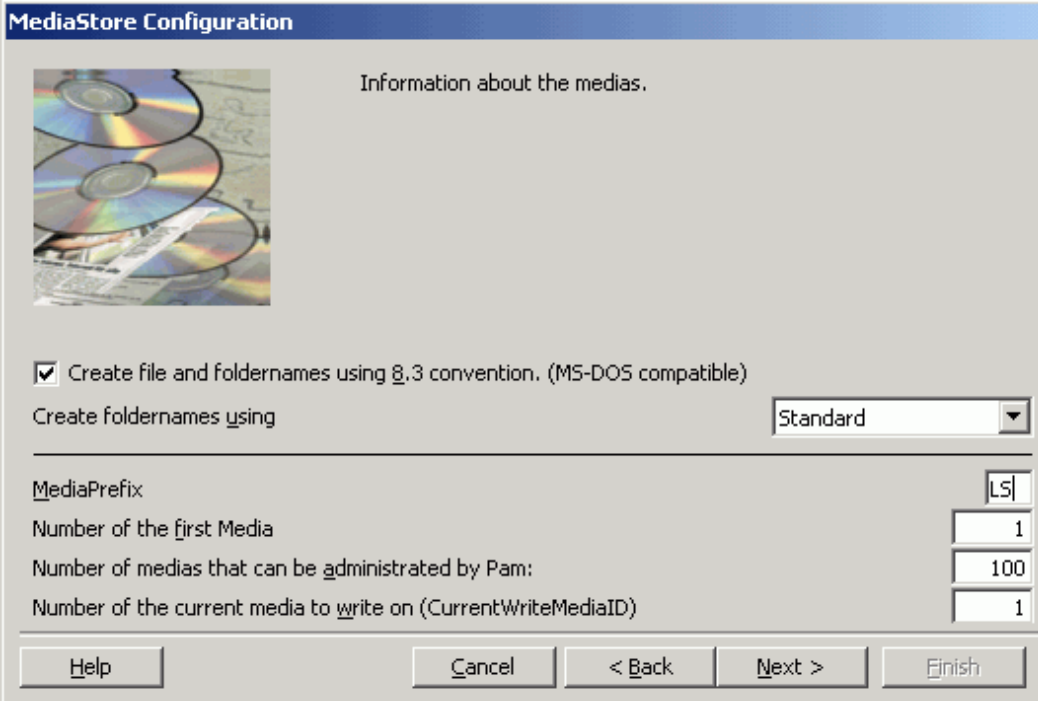
To specify a prefix for the desired MediaStore use the **MediaPrefix** text box. You may enter 2 alphanumerical characters. Those characters will be located in front of each of the media along with the respective media number. In our example we chose LS as the media-prefix (as local store), so the name of one of the media would be LS000001.

In the **Number of the first Medium** text box you may specify a number that will be assigned to the first medium.

In the **Number of media that can be administered by PAM** text box you need to specify the number of media to be administered by PAM4files. For instance, if there are 20 media in a Jukebox, then enter 20.

In the **Number of current media to write on (CurrentWriteMediaID)** text box you may specify the number of the medium that will be used as the first one for archiving.

Click **Next**.



**MediaStore Configuration**

Information about the medias.

Create file and foldernames using 8.3 convention. (MS-DOS compatible)

Create foldernames using Standard

MediaPrefix LS

Number of the first Media 1

Number of medias that can be administrated by Pam: 100

Number of the current media to write on (CurrentWriteMediaID) 1

Help Cancel < Back Next > Finish

13. On the following page you may specify whether to create a directory for each day.


It is recommended to select the **Create a sub directory for each day** check-box to create a directory for each day (an optimal condition). Subdirectories are being created with the path 000001, 000002, and so on. This is necessary for performance reasons, the more files a directory contains the longer the search for a file can take.

By selecting the **Limit the number of files in directory to** check box you may even limit the number of files per directory. Simply enter the appropriate data in the text field.

Select the **Filesystem supports flushing of files (guarantees that files are written correctly)** check box. Normally all file-systems support flushing of files. Disable the option only if you have problems with storing files.

Click **Next**.

**MediaStore Configuration**



To avoid very many files in the root directory, the media is divided into sub directories. Optional it is possible to create a directory per day. You can also limit the number of files in a directory.

The flushing of a file forces the operation system to write all changes of a file physically to disk. If the used operation-system or file-system does not support this, deactivate this option.

Create a sub directory for each day

Limit the number of files in a directory to

Filesystem supports flushing of files (guarantees that files are written correctly)

Help Cancel < Back **Next >** Finish

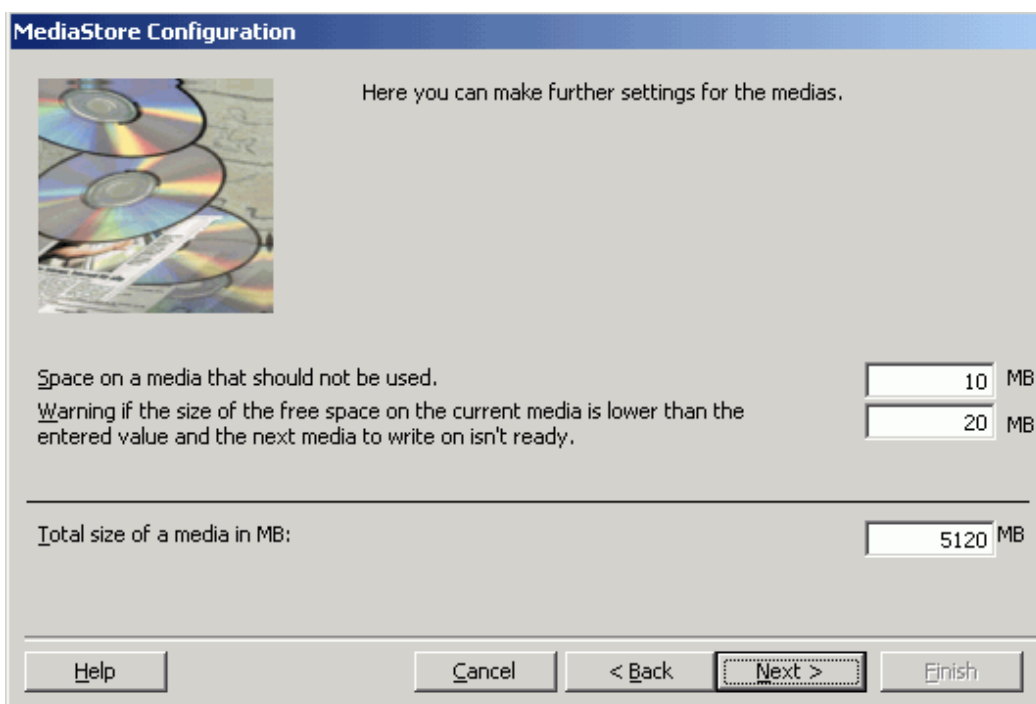
14. On this page you need to specify further settings for the used medium, as well as the total size of the medium.

To set a storage space not to be used on a medium, enter the desired value in the **Space on a media that should not be used** text box. This value is defined in MB.

Besides, you may set a value which refers to a warning message. As soon as free storage space is lower than the value specified in the **Warning if the size of the free space on the current medium is lower than the entered value and the next medium to write on is not ready** text box, you would get a warning message. This value is also in MB. When this value is reached the availability of a new medium is being checked. This value should comply with the approximate average daily amount of MB to archive, so that new medium can be searched in a timely manner.


In the **Total size of media in MB** text box you need to enter the total size of a medium.

Then click **Next**.



**MediaStore Configuration**

Here you can make further settings for the medias.



Space on a media that should not be used.  MB

Warning if the size of the free space on the current media is lower than the entered value and the next media to write on isn't ready.  MB

---

Total size of a media in MB:  MB

Help Cancel < Back **Next >** Finish

15. Now you may choose how often the free space on a medium should be calculated. It can be set in accordance with the number of files, or file size, or simply in seconds. As soon as any of those values are met, the remaining storage space is recalculated.


To periodically recalculate the free space on a medium, simply enter a desired time span in the **Interval in seconds** text box.

To recalculate the free space on a medium depending on the number of files that have been archived since the most recent calculation, simply enter the desired value in the **Number of archived files** text box.

To recalculate the free space on a medium depending on the archived volume since the most recent calculation, simply enter the desired value in the **Total size of the archived files** text box. This value should be given in MB.

Click **Next**.

**MediaStore Configuration**



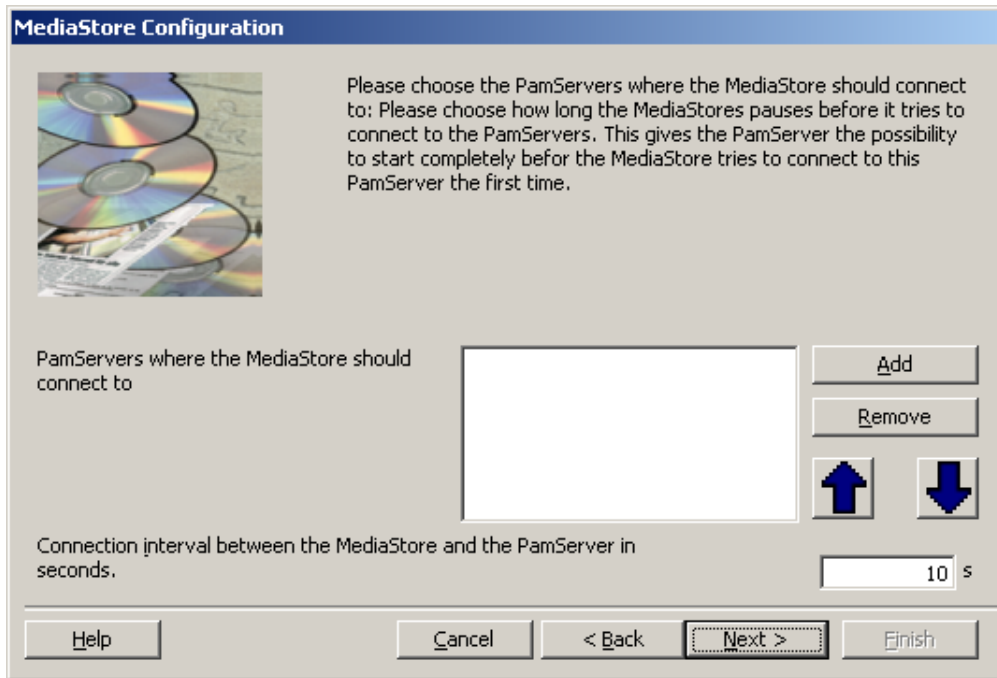
Here you can choose how often the free space on a media should be calculated.

Interval in seconds:

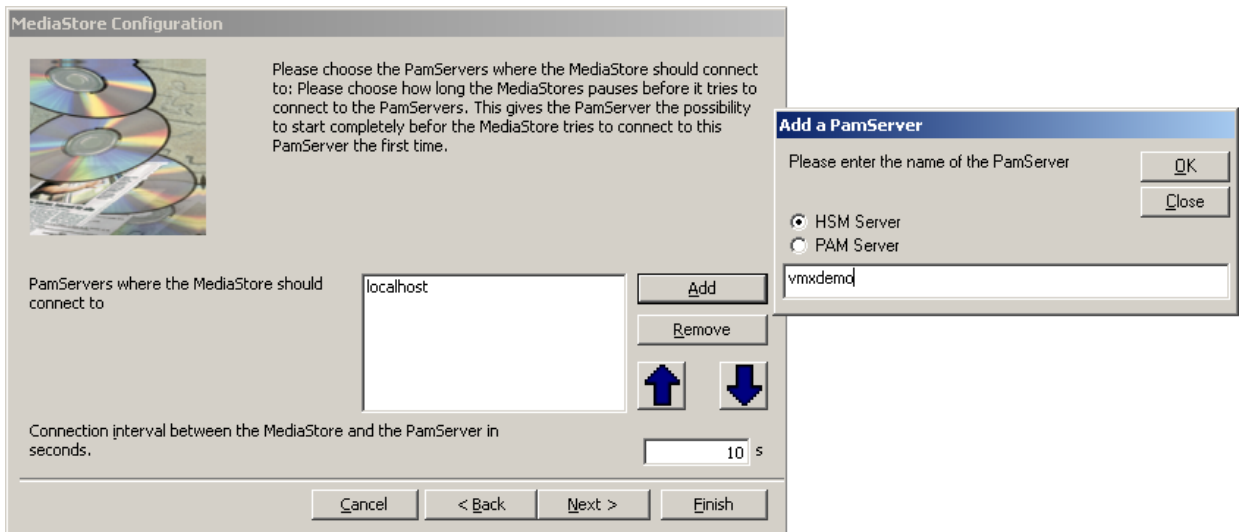
Number of archived files:

Total size of the archived files:  MB

- 16. On this page you need to specify where the MediaStore should connect to. Click the **Add** button to specify the HSM server.

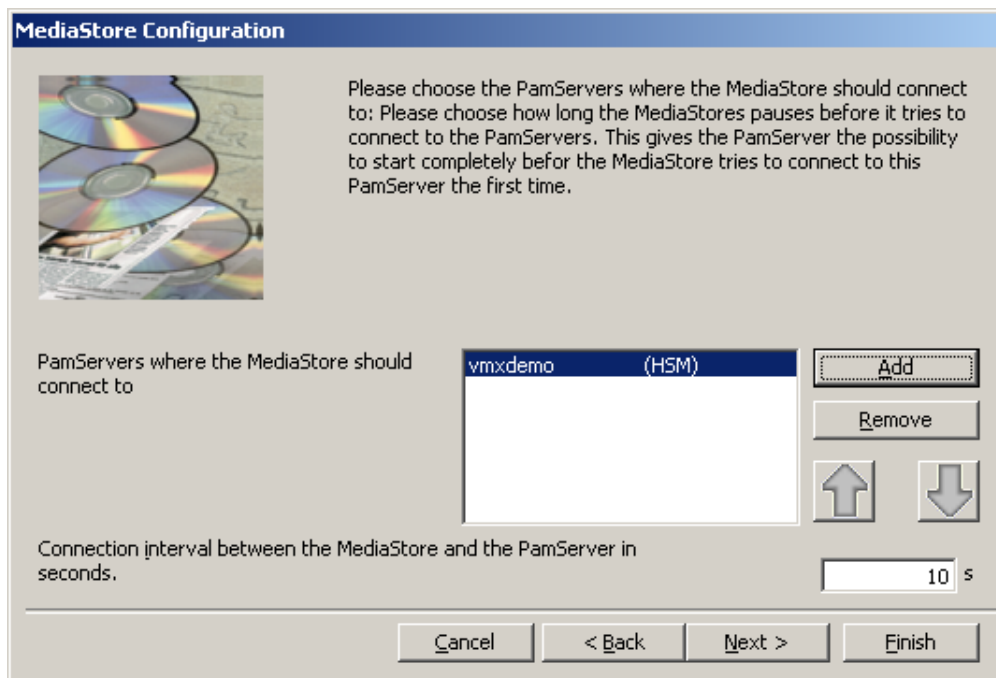


- 17. In the **Add a PamServer** window select the **HSM Server** option and then enter the name of the HSM server in the text box. Click **OK** to close the window.

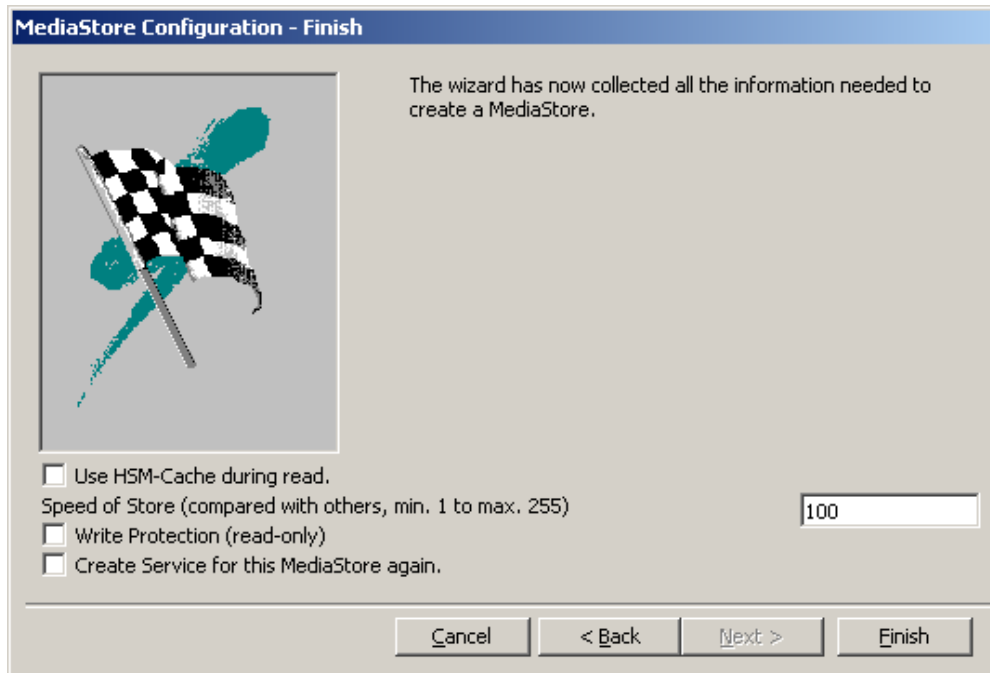


- 18. The HSM Service contacts the MediaStore you specified in periodical intervals. Specify this interval in the **Connection interval between the MediaStore and the PamServer in seconds** text box.

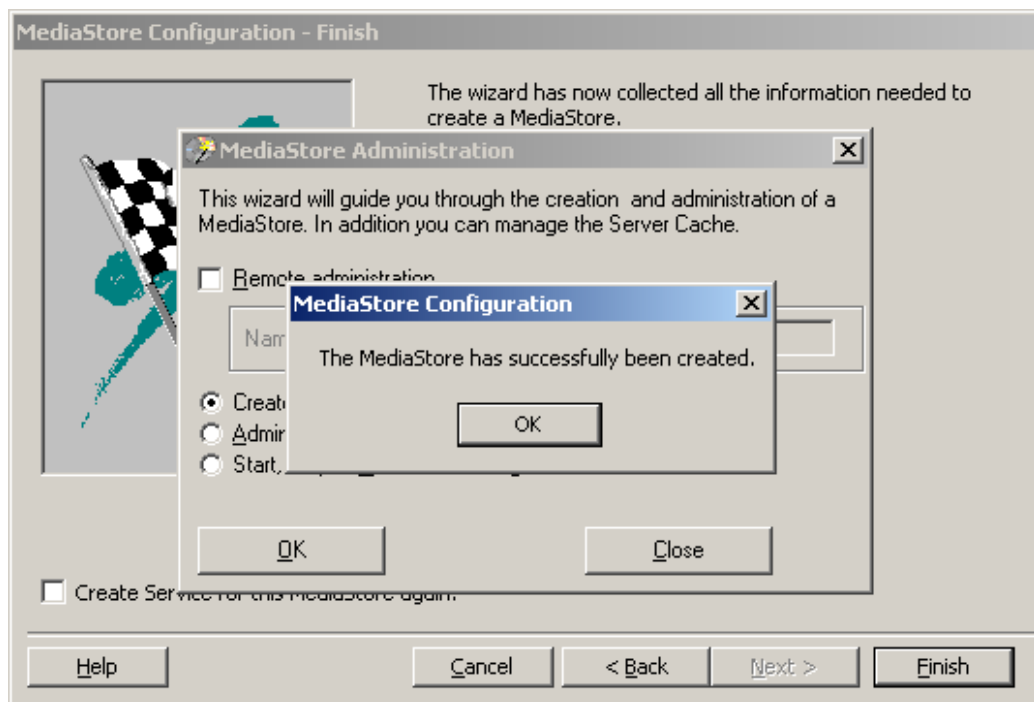
Click **Next**.



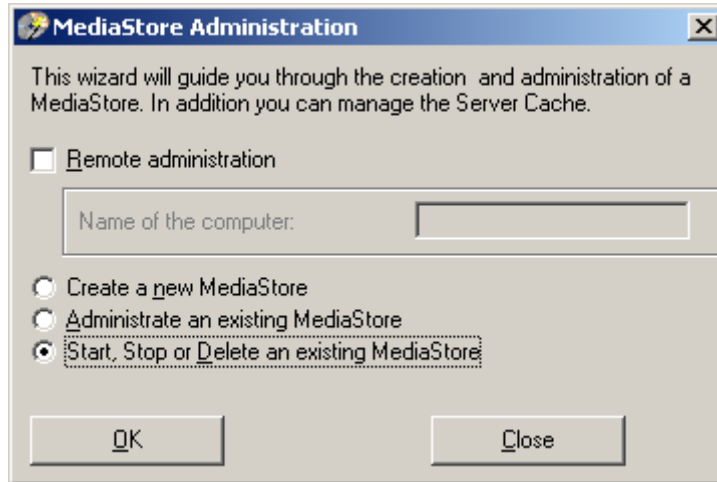
19. If HSM should copy files into the cache when reading from this store, check **Use HSM-Cache during read**.  
 Speed of **Store** text box represents the relative speed of this store compared to other stores.  
 If this media should be read-only, check **Write Protection** check box (only supported for “Jukebox, Harddisk, Network” and “Simple Path”).  
 Check **Create Service for this MediaStore again** to let the tool check if the service exists and recreate it, if not. (Be sure to close all MMC-Snap-Ins which display the list of services, before executing this step.)  
 Click **Finish**.



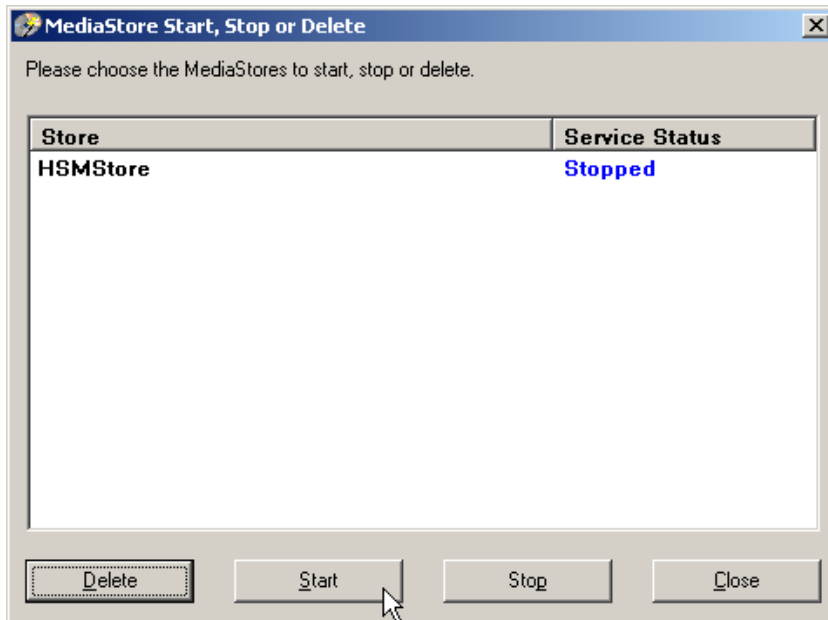
20. The MediaStore has been created and configured. Click **OK**.



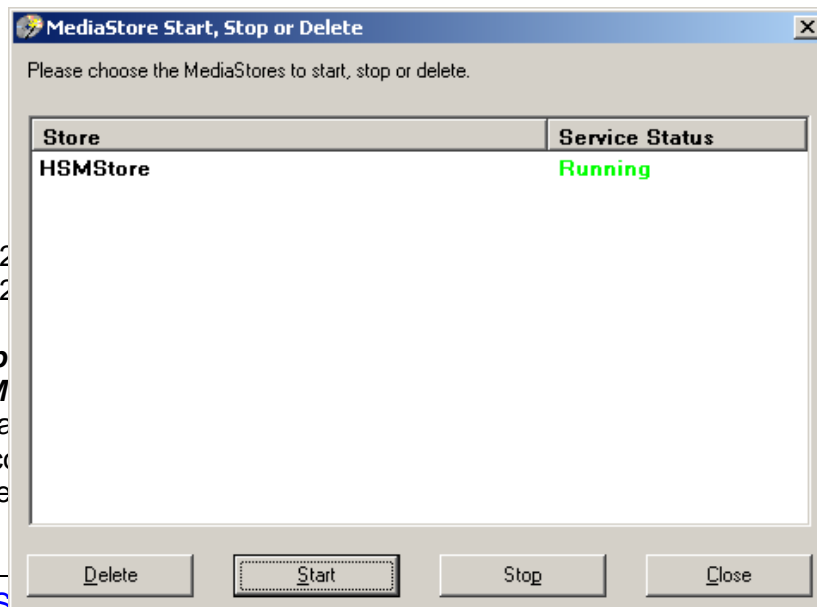
21. At this point it is good to check whether your MediaStore is running. So in the **MediaStore Administration** window select the **Start, Stop or Delete an existing MediaStore** option and then click **OK**.



22. In the **MediaStore Start, Stop or Delete** window select the store you have just created and click on the **Start** button to start the store.



23. As you may see on the screenshot below the store has started running.



**Tip**  
**PM**  
"ma  
rec  
afte

d, a service called  
up type is set to  
ols \ Services. We  
automatically, e.g.

### Simple Path MediaStore

In this section will guide you through the process of creating **Simple Path** MediaStore.

**Simple Path** store-type is recommended if you do not need directories with a specific size (e.g. 5 GB) and you have a Harddisk or RAID-system as a storage.

This kind of store is faster and outperforms all other stores under the same circumstances (same hardware, same path).

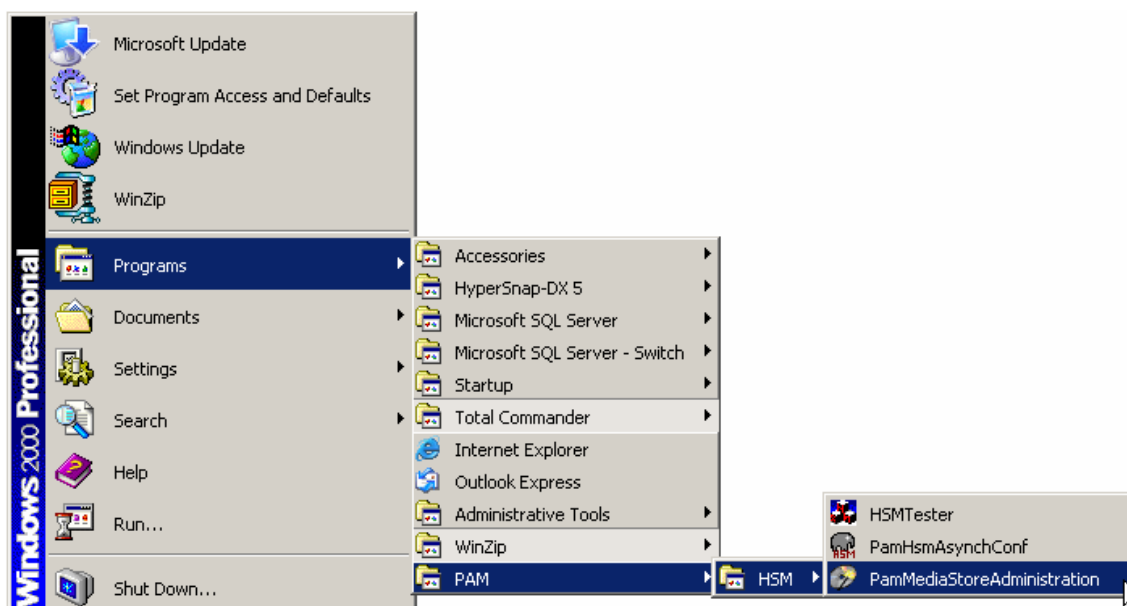
Description:

- It does not do size checking
- It writes files on any UNC path (e.g. Harddisk, Network-Share)
- Files are stored in subdirectories (there are no “medias” with a specific size)  
<RootPath>\<Year>\<Month>\<Day>\<Hour>\<counter>\Filename.txt  
e.g. D:\HsmStore\2007\04\26\18\000\ 4\_000000f4.tif

**NOTE:** If you need to access a share you have to allow the computer account (Local System) to access a share or run PamHsmTSv with a special user.

To create a MediaStore – **Simple Path** type, do as follows:

1. Click **Start/Programs/PAM/HSM/PamMediaStoreAdministration**.

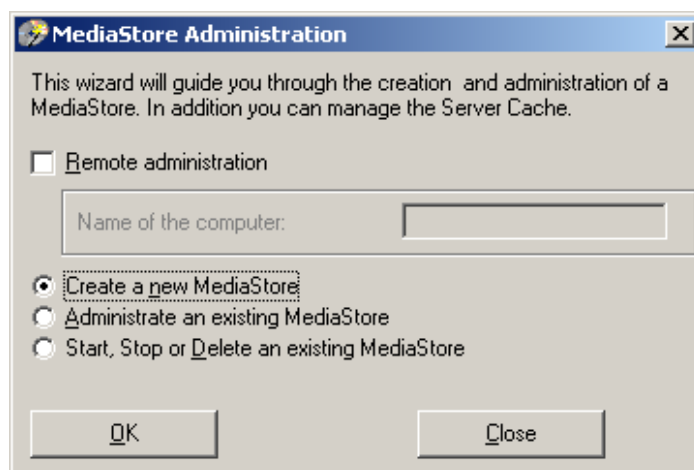


2. In the **MediaStore Administration** window select the **Create a new MediaStore** option. Then click **OK**.

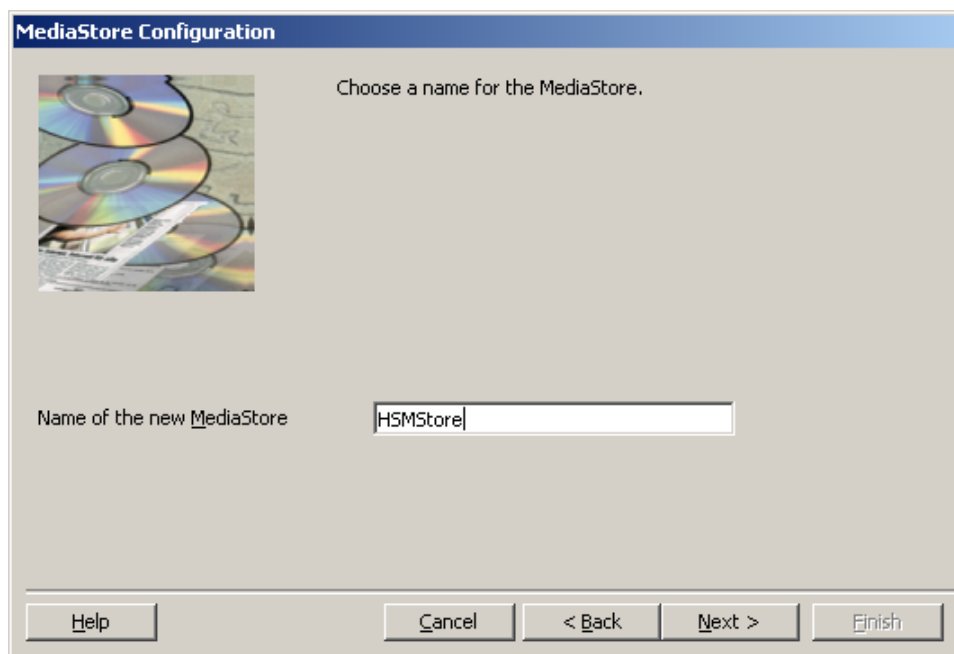
**NOTE:** The other options are to be used as follows:

- d) If you select the **Administrate an existing MediaStore** option you will be able to modify an existing MediaStore. Please note that a MediaStore cannot be modified when being used.

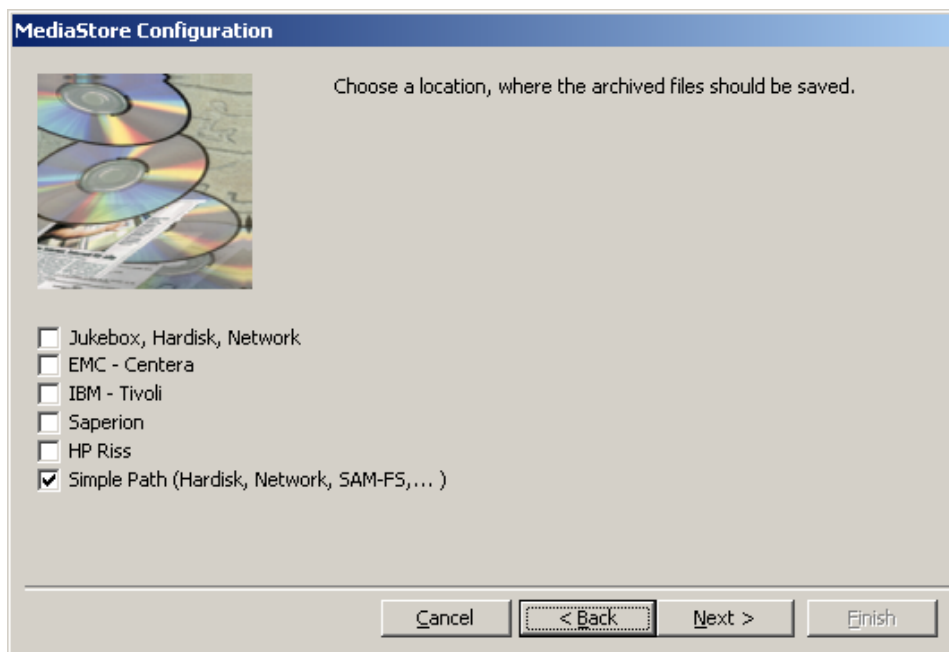
- e) If you select the **Start, Stop or Delete an existing MediaStore** option you will be able to start, stop or delete an existing MediaStore respectively.
- f) If you have an existing MediaStore on another computer, select the **Remote administration** check box. With this feature you can connect to the respective remote computer and administer the MediaStore remotely.



3. Click **Next** to pass the introducing dialog.
4. In the **MediaStore Configuration** window enter a name for your new MediaStore in the **Name of the new MediaStore** text-box. Then click **Next**.

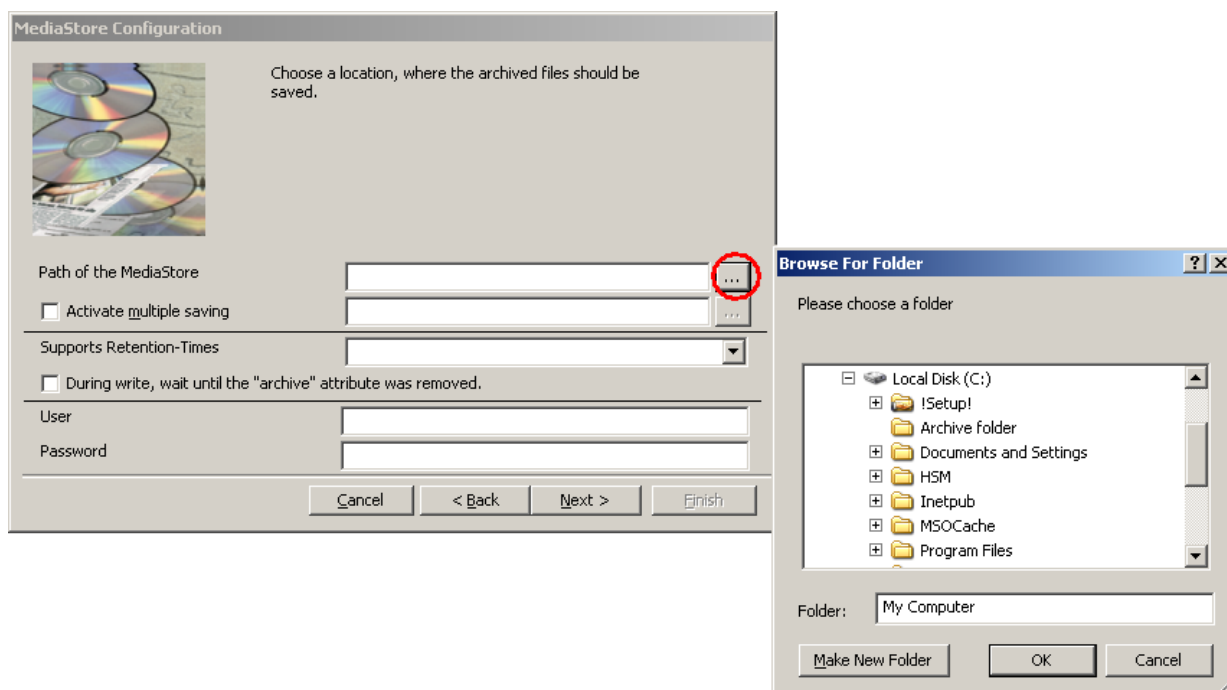


5. To configure the MediaStore, select the **Simple Path (Hard disk, Network, SAM-FS,...)** check-box. Click **Next**.



6. Click on the **browse** button next to the **Path of the MediaStore** box to enter the appropriate path to your MediaStore.

**NOTE:** To create a new folder, use the **Make New Folder** button. Enter the name for this new folder, e.g. *Store* and click **OK**.



If your MediaStore is a network share, you can specify which **User** (with its **Password**) should access the share. You have to specify the user if:

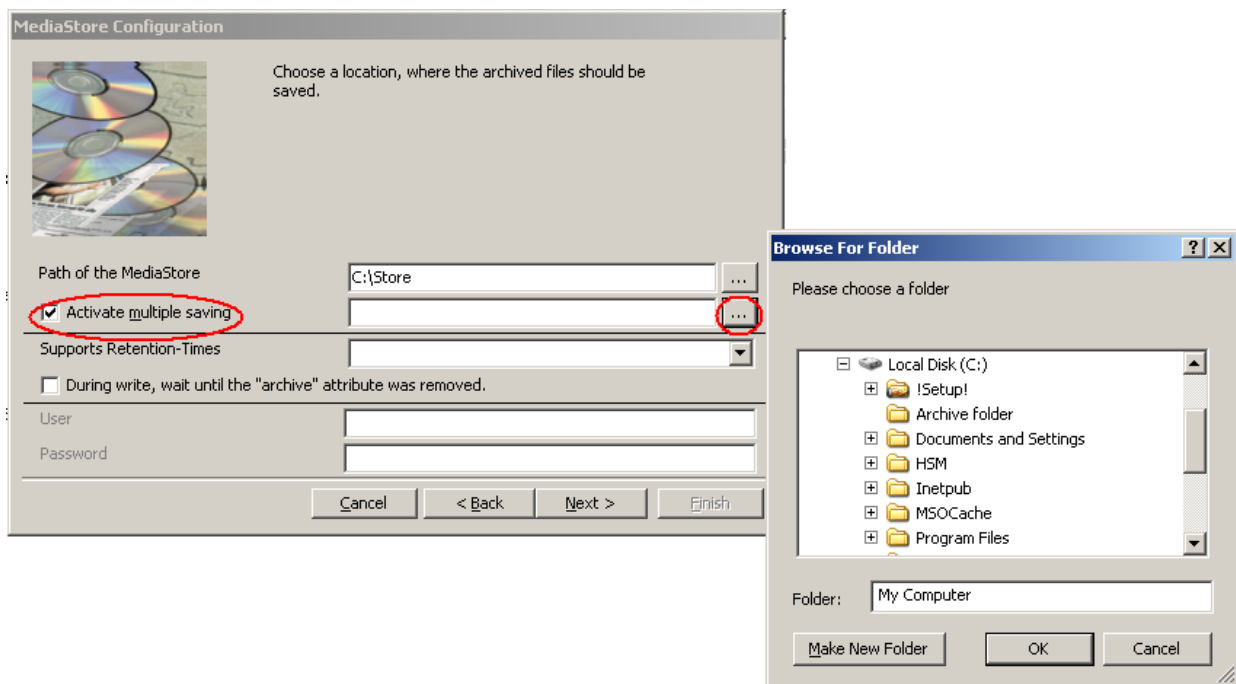
- your share is not accessible by the user which runs the HSM services;
- you need a different user for each store;
- you want to create more “Simple Stores” accessing network shares; In that situation consider the following:
  - a. Should the network shares be on ONE SERVER, you have to specify the same user for all “Simple Stores”.
  - b. Should each “Simple Store” access network share on a DIFFERENT SERVER, you have to specify different user for each Simple Store.

**NOTE:** The specified user does not need to be a known local user.

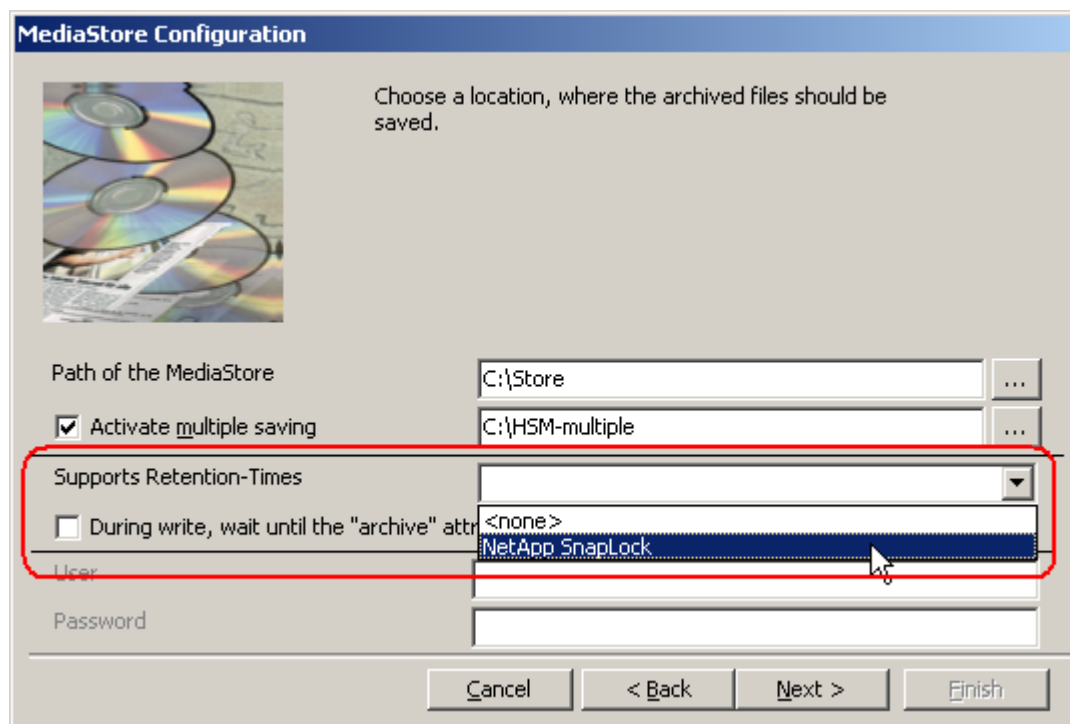
The screenshot shows the 'MediaStore Configuration' dialog box. It includes a title bar, a subtitle, an image of CDs, and several configuration options. The 'Path of the MediaStore' is set to '\\freenas\data'. The 'User' field is set to 'hsm' and the 'Password' field is masked with asterisks. A red box highlights the User and Password fields, and a red arrow points from the 'archive' attribute checkbox to the User field.

7. Should you wish to archive files simultaneously to some other location as well, select the **Activate multiple saving** check-box. Use the **browse** button, similarly as above, to specify a second path. The files will be archived to this second location, too.

**NOTE:** The second path can be anything that is reachable by a drive-letter or a network share, something accessible with Windows Explorer. In normal usage the first path is a slow MediaStore (e.g. Pegasus, Jukebox), and the second path is a large SAN (e.g. local RAID or Harddisk). For fast access you should use SAN because it's much faster.



8. If you are using NetApp and want to use SnapLock, select the **NetApp SnapLock** option in the **Supports Retention-Times** down-drop box to secure the compliancy with law regulations regarding archiving of electronic documents (e.g. HIPAA, OFRS, COSO etc.).



9. If you are storing to SAM-FS (a kind of NAS - Network Attached Storage) check the **During write, wait until the “archive” attribute was removed** check box. With this feature activated you have configured the SAM-FS to remove the “archive” attribute after the file was copied into a safe location (e.g. after it was copied to a tape drive). If you have finished, click **Next**.

MediaStore Configuration

Choose a location, where the archived files should be saved.

Path of the MediaStore C:\Store ...

Activate multiple saving C:\HSM-multiple ...

Supports Retention-Times <none>

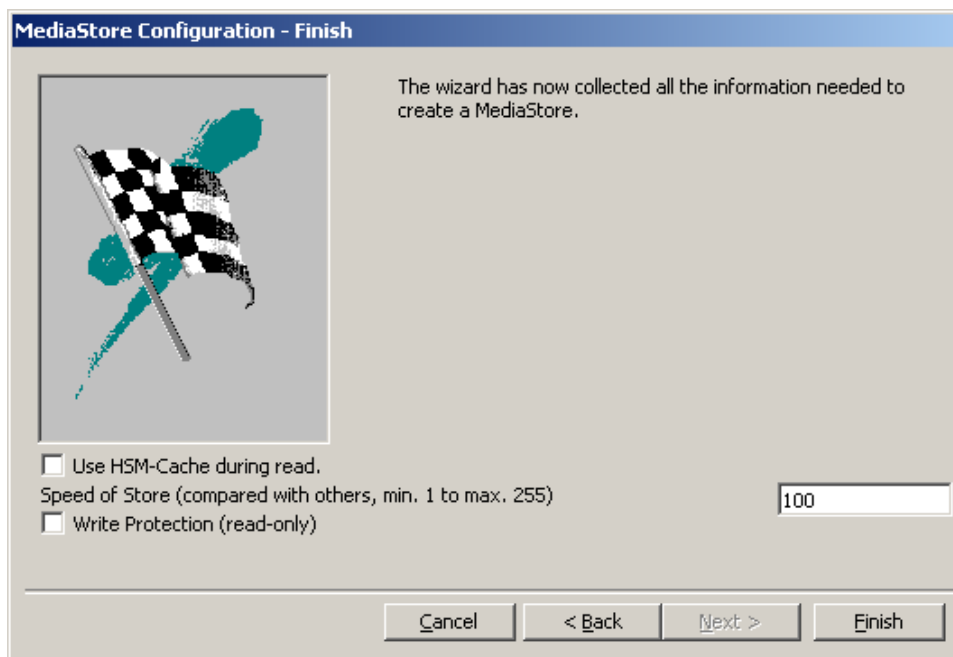
During write, wait until the "archive" attribute was removed.

User

Password

Cancel < Back Next > Finish

10. If HSM should copy files into the cache when reading from this store, check **Should HSM use caching when accessing this MediaStore**. Speed of **Store** text box represents the relative speed of this store compared to other stores. If this media should be read-only, check **Write Protection** check box. (only supported for “Jukebox, Harddisk, Network” and “Simple Path”) Click **Finish**.



11. Now you may click **Close** in the **MediaStore Administration** window to close the window. The MediaStore is ready.

Finally restart the **PAM HSM Base Store operations** service to apply the settings.

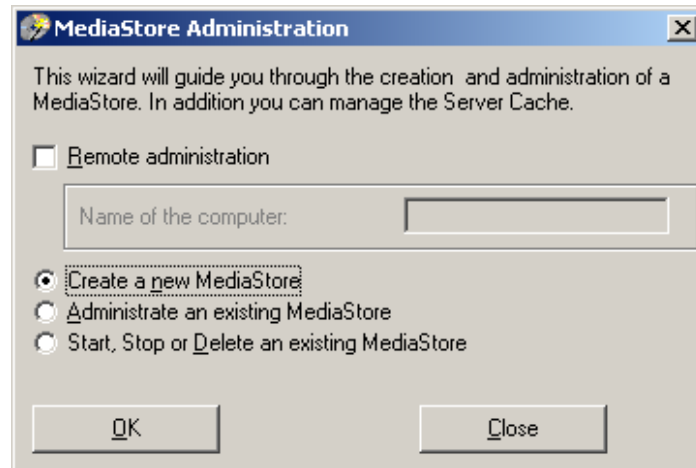
### EMC-Centera MediaStore

To create EMC-Centera MediaStore:

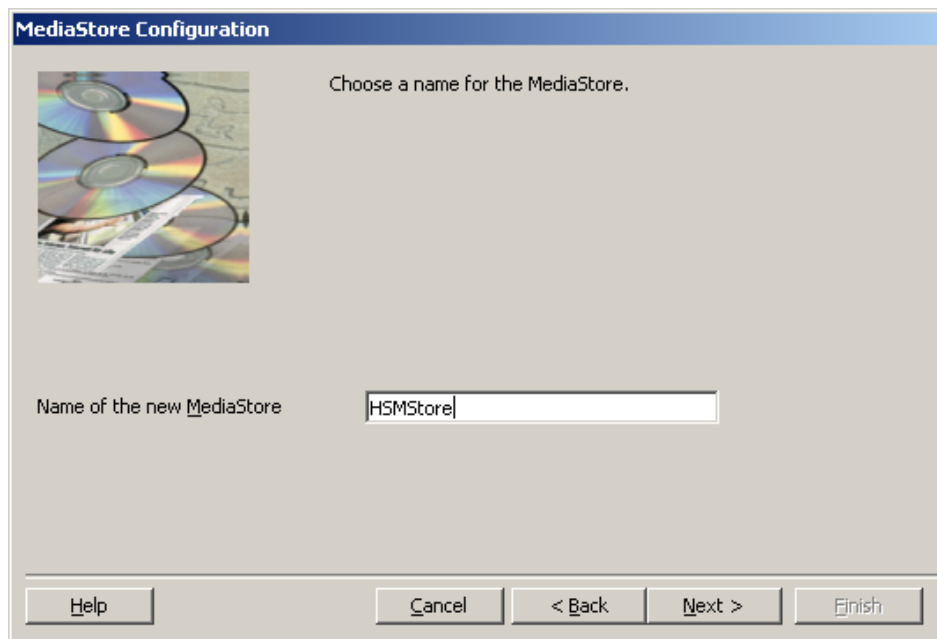
1. Click **Start/Programs/PAM/HSM/PamMediaStoreAdministration**.
2. In the **MediaStore Administration** window select the **Create a new MediaStore** option. Then click **OK**.

**NOTE:** The other options are to be used as follows:

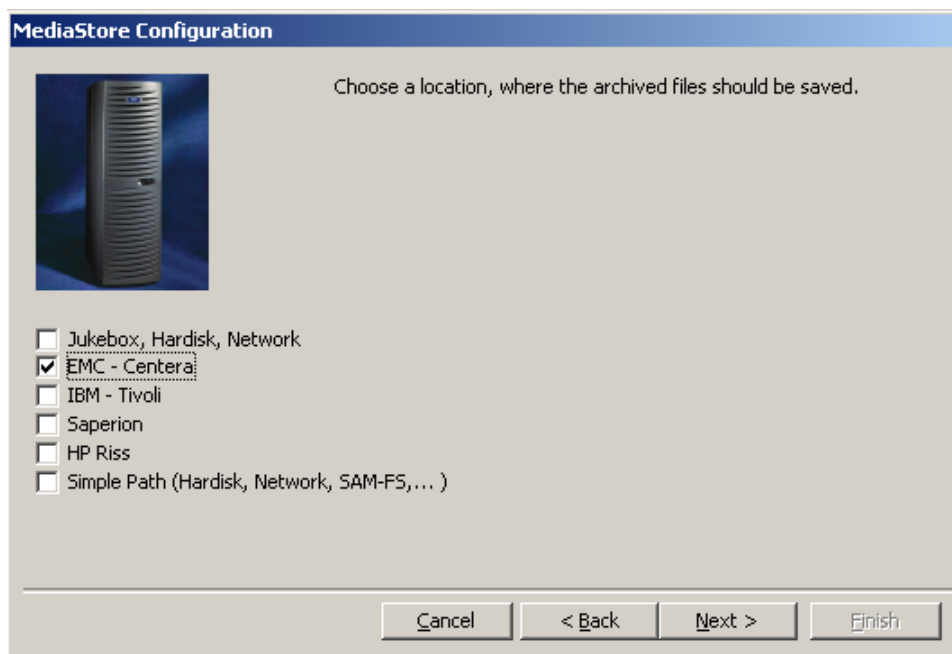
- g) If you select the **Administrate an existing MediaStore** option you will be able to modify an existing MediaStore. Please note that a MediaStore cannot be modified when being used.
- h) If you select the **Start, Stop or Delete an existing MediaStore** option you will be able to start, stop or delete an existing MediaStore respectively.
- i) If you have an existing MediaStore on another computer, select the **Remote administration** check-box. With this feature you can connect to the respective remote computer and administer the MediaStore remotely.



3. Click **Next** to pass the introducing dialog.
4. In the **MediaStore Configuration** window enter a name for your new MediaStore in the **Name of the new MediaStore** text box. Then click **Next**.



5. To configure the EMC-Centera MediaStore, select the relevant check box. Then click **Next**.



6. In the **Centera IP-Addresses** text box insert all IP-addresses of your Centera Cluster. Use commas to separate IP-addresses.

**Examples:**

“10.2.3.4.”

“CenteraNode\_1,CenteraNode\_2”

“10.2.3.4,10.6.7.8?C:\centera\rwe.pea”

“10.2.3.4,10.6.7.8?name=<username>,secret=<password>”


It is possible to let the Centera Connection run in its own process (**Run interface in own process**). That way, two different connections to Centera won't affect each other. If a connection is broken, the whole connection (running in its own process) can be restarted, without the need to restart HSM.

**Embedded Blobs** - Normally if the Centera stores a file it creates two files internally (one CDF file which contains the meta-data and a second file for the data itself). This means that each file increments the file-count on the Centera by two. If you store lots of small files, the Centera can run out of “file-count” before it runs out of disk space. With these settings the data up to the set size is embedded in the meta-data file. (Internally this is a XML file and the data is saved as a base 64 encoded data)

If **Open connection to Centera only as needed (Lazy open)** is checked, the connection to the Centera is opened at the very latest moment possible. This is done by the Centera SDK itself and is a setting recommended by EMC.

Click **Next**.

**MediaStore Configuration**



Please insert all ip-addresses of your Centera Cluster. Use commas to separate ip-addresses.

Examples:  
 "10.2.3.4"  
 "CenteraNode\_1,CenteraNode\_2"  
 "10.2.3.4,10.6.7.8?c:\centera\rwe.pea"  
 "10.2.3.4,10.6.7.8?name=<username>,secret=<password>"

Centera IP-Addresses:

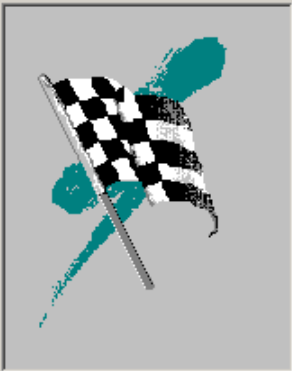
Run interface in own process.

Embedded Blobs  KB

Open connection to Centera only as needed (Lazy open)

7. If HSM should copy files into the cache when reading from this store, check **Use HSM-Caching during read**. **Speed of Store** text box represents the relative speed of this store compared to other stores. Click **Finish**.

**MediaStore Configuration - Finish**



The wizard has now collected all the information needed to create a MediaStore.

Use HSM-Cache during read.

Speed of Store (compared with others, min. 1 to max. 255)

Write Protection (read-only)

8. Click **Close** in the **MediaStore Administration**.

Finally restart the **PAM HSM Base Store operations** service to apply the settings.

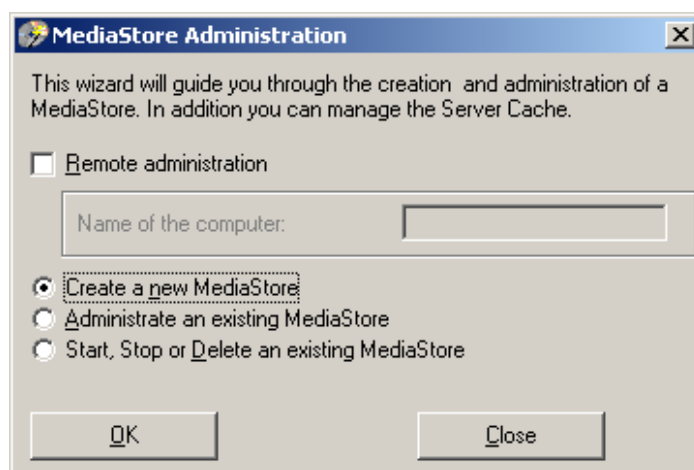
## IBM-Tivoli MediaStore

To create IBM-Tivoli MediaStore:

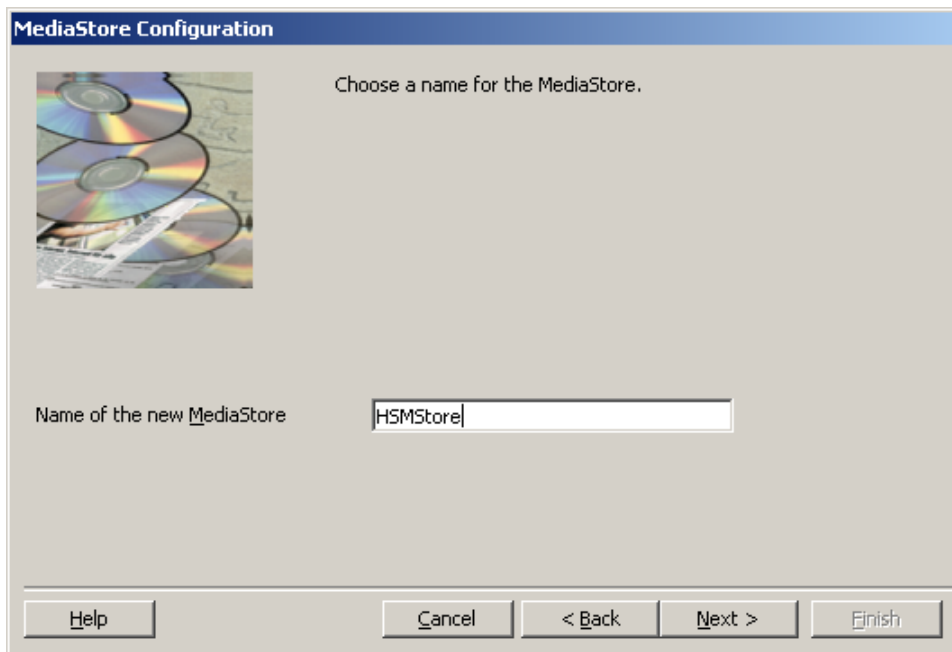
1. Click **Start/Programs/PAM/HSM/PamMediaStoreAdministration**.
2. In the **MediaStore Administration** window select the **Create a new MediaStore** option. Then click **OK**.

**NOTE:** The other options are to be used as follows:

- j) If you select the **Administrate an existing MediaStore** option you will be able to modify an existing MediaStore. Please note that a MediaStore cannot be modified when being used.
- k) If you select the **Start, Stop or Delete an existing MediaStore** option you will be able to start, stop or delete an existing MediaStore respectively.
- l) If you have an existing MediaStore on another computer, select the **Remote administration** check-box. With this feature you can connect to the respective remote computer and administer the MediaStore remotely.



3. Click **Next** to pass the introducing dialog.
4. In the **MediaStore Configuration** window enter a name for your new MediaStore in the **Name of the new MediaStore** text-box. Then click **Next**.



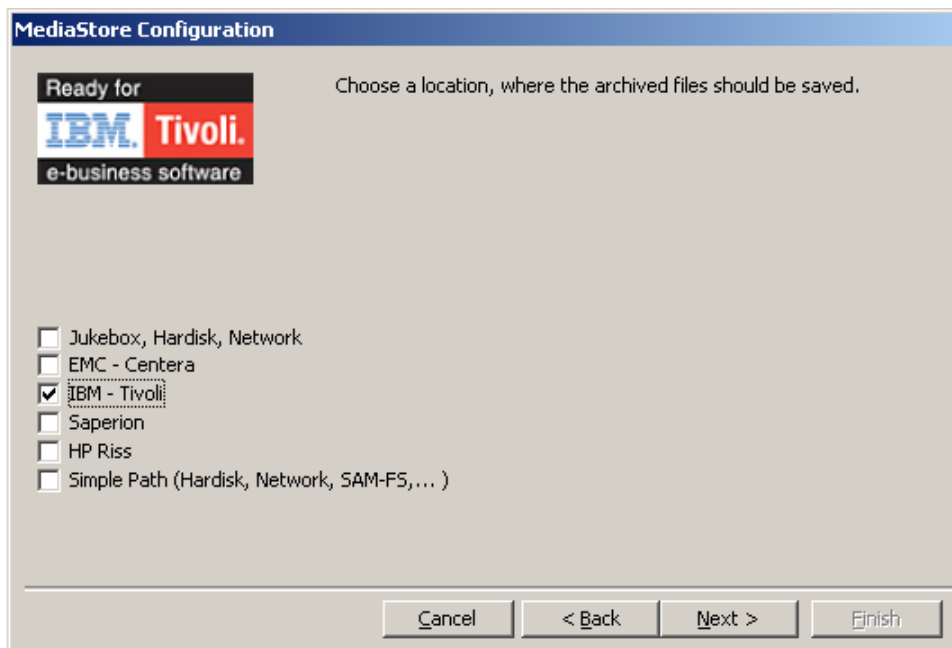
MediaStore Configuration

Choose a name for the MediaStore.

Name of the new MediaStore: HSMStore

Buttons: Help, Cancel, < Back, Next >, Finish

5. To configure the IBM-Tivoli MediaStore, select the relevant check-box. Then click **Next**.



MediaStore Configuration

Ready for IBM Tivoli e-business software

Choose a location, where the archived files should be saved.

Jukebox, Hardisk, Network

EMC - Centera

IBM - Tivoli

Saperion

HP Riss

Simple Path (Hardisk, Network, SAM-FS,...)

Buttons: Cancel, < Back, Next >, Finish

6. Specify your settings: **Config File** - enter the path of the config-file. **Log Directory** - enter the directory where HSM should do its logging for TSM. **API Directory** - enter the path where the API is installed. Finally enter the name of the **User** to be used for connecting and its **Password**.

**MediaStore Configuration**

Ready for **IBM Tivoli** e-business software

Setting for IBM Tivoli Storage Manager

Config File: C:\Program Files\Tivoli\TSM\config\vmHsm.opt

Log Directory: C:\Program Files\Tivoli\TSM

API Directory: C:\Program Files\Tivoli\TSM\api

User: pam

Password: \*\*\*\*\*

Buttons: Cancel, < Back, Next >, Finish

7. In the **Management Class** text box define where it is saved in Tivoli Storage Manager (“TSM”).

**Note** - also defines where the data is stored.

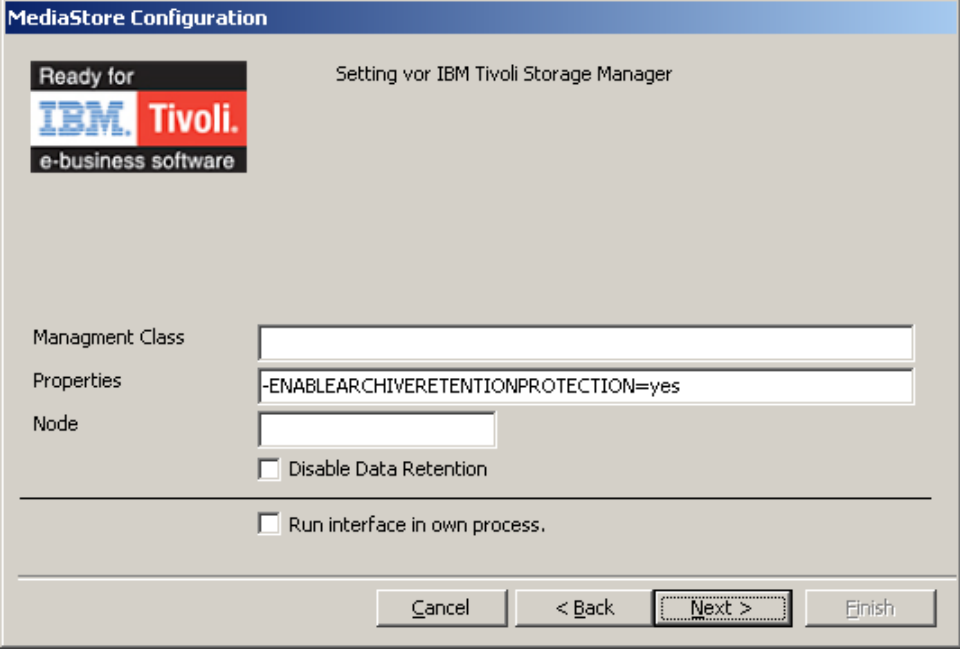
**Properties** - any property supported by TSM can be entered here, the only setting which is mandatory for HSM is the “enable archive retention protection” if data retention is used.

Check **Disable Data Retention** check box if:

- you do not have a license (e.g. if you just store on a tape and do not need that protection)
- the installation of TSM does not support Data Retention Mode

**NOTE:** If a TSM system requires data-retention (e.g. DR550), do NOT check this check box.

It is possible to let the IBM-Tivoli Connection run in its own process (**Run interface in own process**). That way, two different connections to Tivoli won't affect each other. If a connection is broken, the whole connection (running in its own process) can be restarted, without the need to restart HSM.



**MediaStore Configuration**

Ready for **IBM Tivoli** e-business software

Setting for IBM Tivoli Storage Manager

Management Class:

Properties:

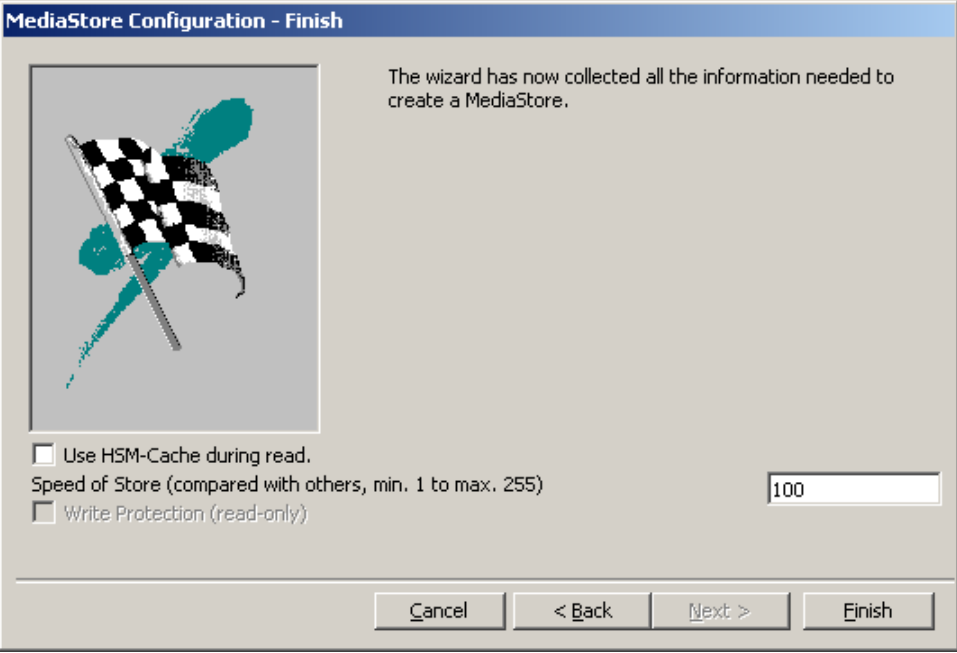
Node:

Disable Data Retention

Run interface in own process.

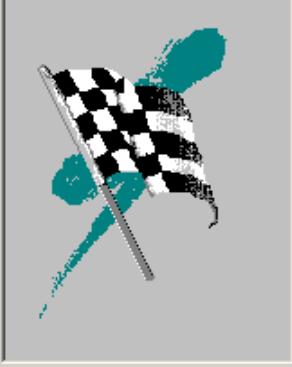
Buttons: Cancel, < Back, Next >, Finish

8. If HSM should copy files into the cache when reading from this store, check **Use HSM-Caching during read**. **Speed of Store** text box represents the relative speed of this store compared to other stores. Click **Finish**.



**MediaStore Configuration - Finish**

The wizard has now collected all the information needed to create a MediaStore.



Use HSM-Cache during read.

Speed of Store (compared with others, min. 1 to max. 255)

Write Protection (read-only)

Buttons: Cancel, < Back, Next >, Finish

9. Click **Close** in the **MediaStore Administration**. The MediaStore is ready.

Finally restart the **PAM HSM Base Store operations** service to apply the settings.

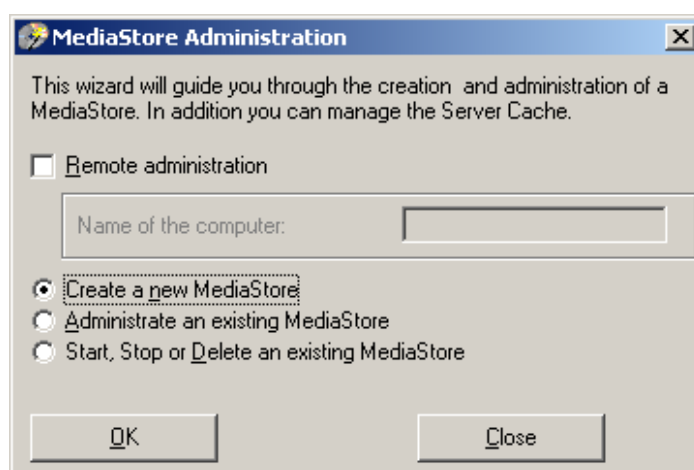
## Saperion MediaStore

To create Saperion MediaStore:

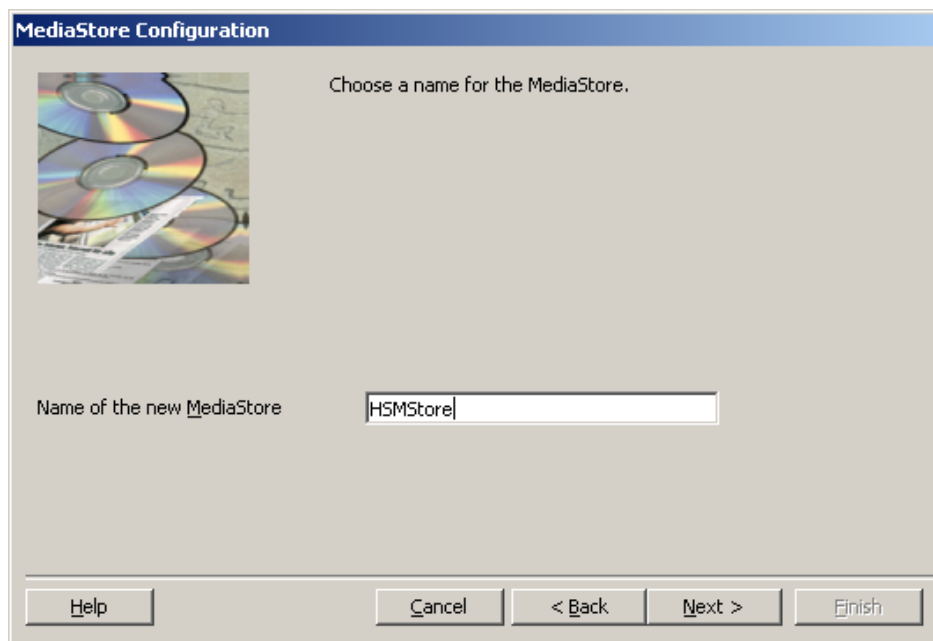
1. Click **Start/Programs/PAM/HSM/PamMediaStoreAdministration**.
2. In the **MediaStore Administration** window select the **Create a new MediaStore** option. Then click **OK**.

**NOTE:** The other options are to be used as follows:

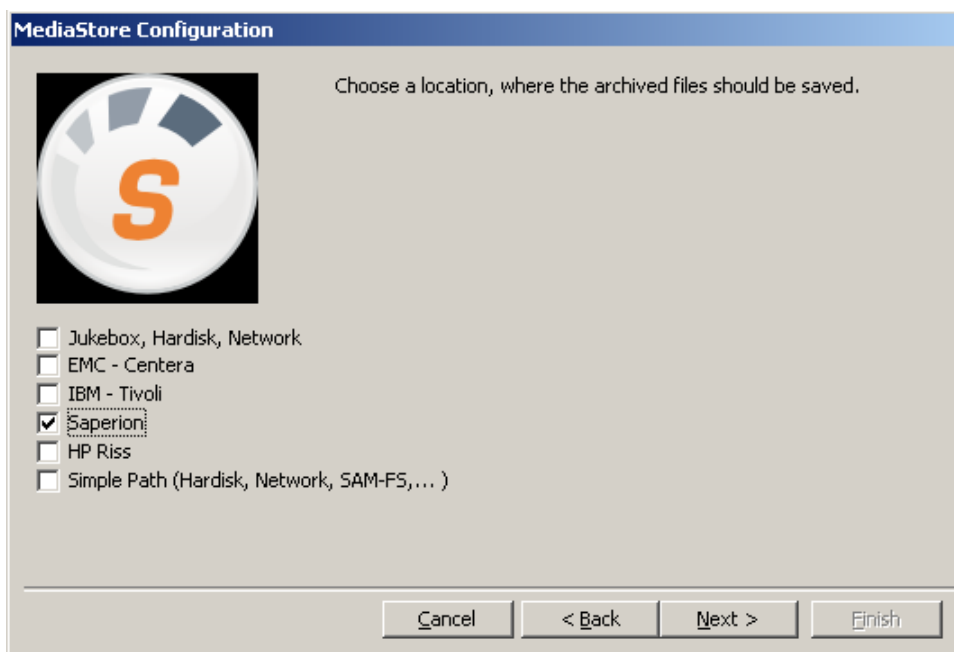
- a) If you select the **Administrate an existing MediaStore** option you will be able to modify an existing MediaStore. Please note that a MediaStore cannot be modified when being used.
- b) If you select the **Start, Stop or Delete an existing MediaStore** option you will be able to start, stop or delete an existing MediaStore respectively.
- c) If you have an existing MediaStore on another computer, select the **Remote administration** check box. With this feature you can connect to the respective remote computer and administer the MediaStore remotely.



3. Click **Next** to pass the introducing dialog.
4. In the **MediaStore Configuration** window enter a name for your new MediaStore in the **Name of the new MediaStore** text-box. Then click **Next**.



5. To configure the Saperion MediaStore, select the relevant check-box. Then click **Next**.



6. Specify the **Username** and **Password** for your Saperion store. The following settings are needed by Saperion:  
**Kind of User** - normally an "archive-user" thus 3  
**Poolvariable** - the name of the pool where the data is stored.  
 Click **Next**.

7. If HSM should copy files into the cache when reading from this store, check **Use HSM-Caching during read**. **Speed of Store** text box represents the relative speed of this store compared to other stores. Click **Finish**.

8. Click **Close** in the **MediaStore Administration**. The MediaStore is ready.  
Finally restart the **PAM HSM Base Store operations** service to apply the settings.

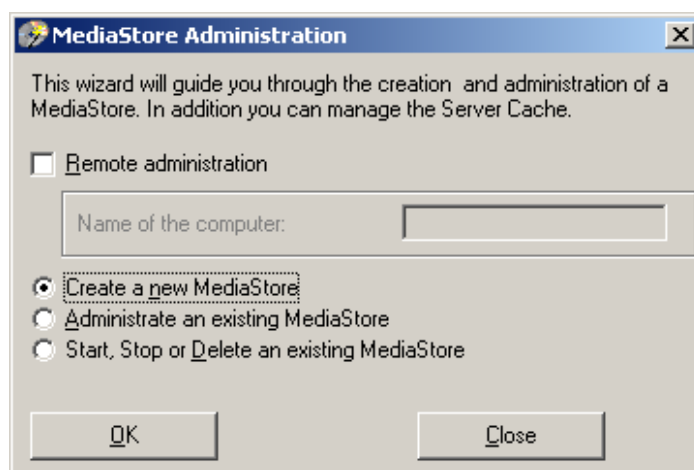
## HP Riss MediaStore

To create HP Riss MediaStore:

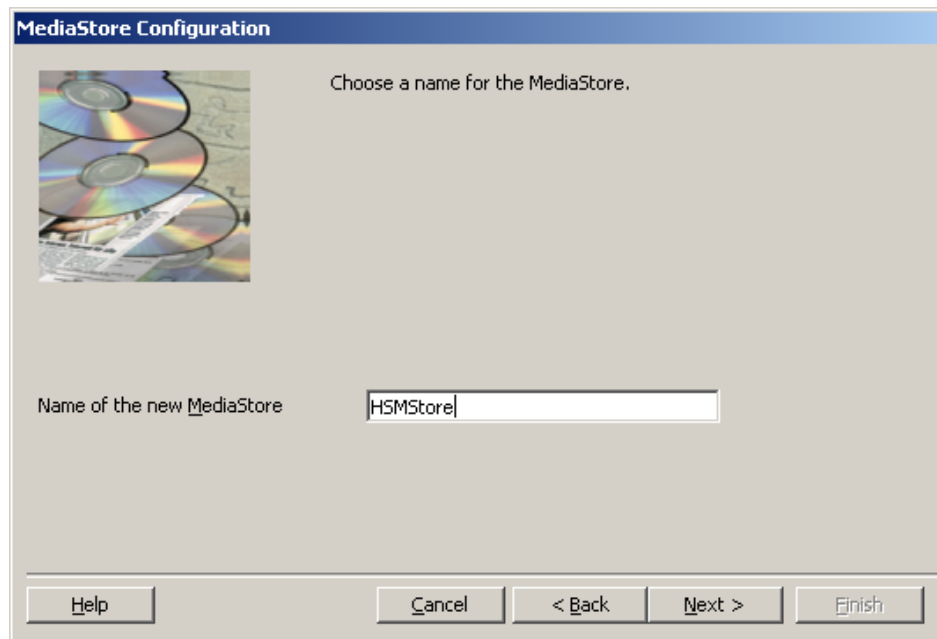
1. Click **Start/Programs/PAM/HSM/PamMediaStoreAdministration**.
2. In the **MediaStore Administration** window select the **Create a new MediaStore** option. Then click **OK**.

**NOTE:** The other options are to be used as follows:

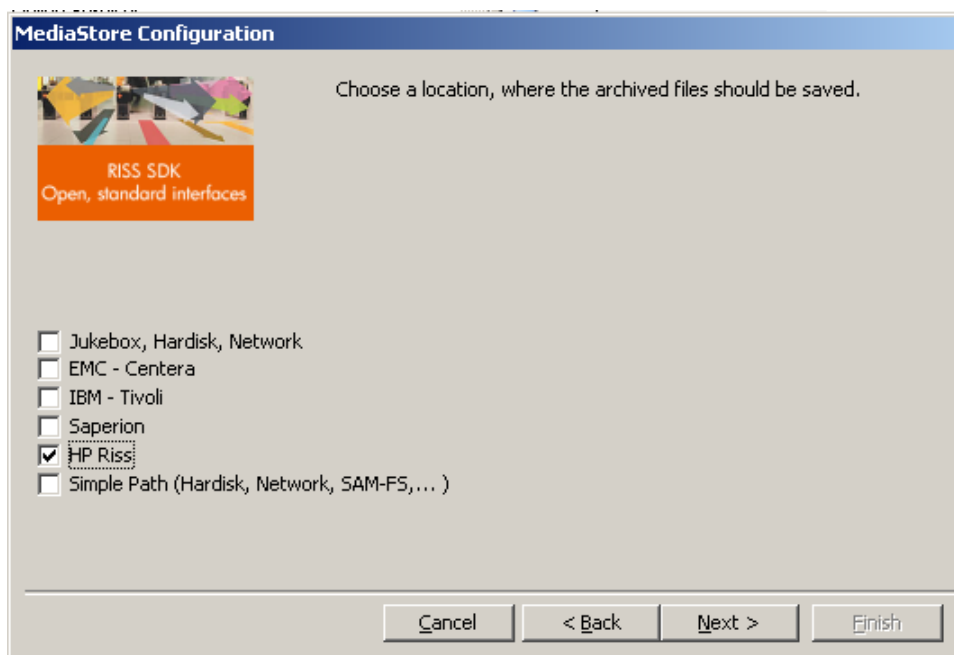
- d) If you select the **Administrate an existing MediaStore** option you will be able to modify an existing MediaStore. Please note that a MediaStore cannot be modified when being used.
- e) If you select the **Start, Stop or Delete an existing MediaStore** option you will be able to start, stop or delete an existing MediaStore respectively.
- f) If you have an existing MediaStore on another computer, select the **Remote administration** check-box. With this feature you can connect to the respective remote computer and administer the MediaStore remotely.



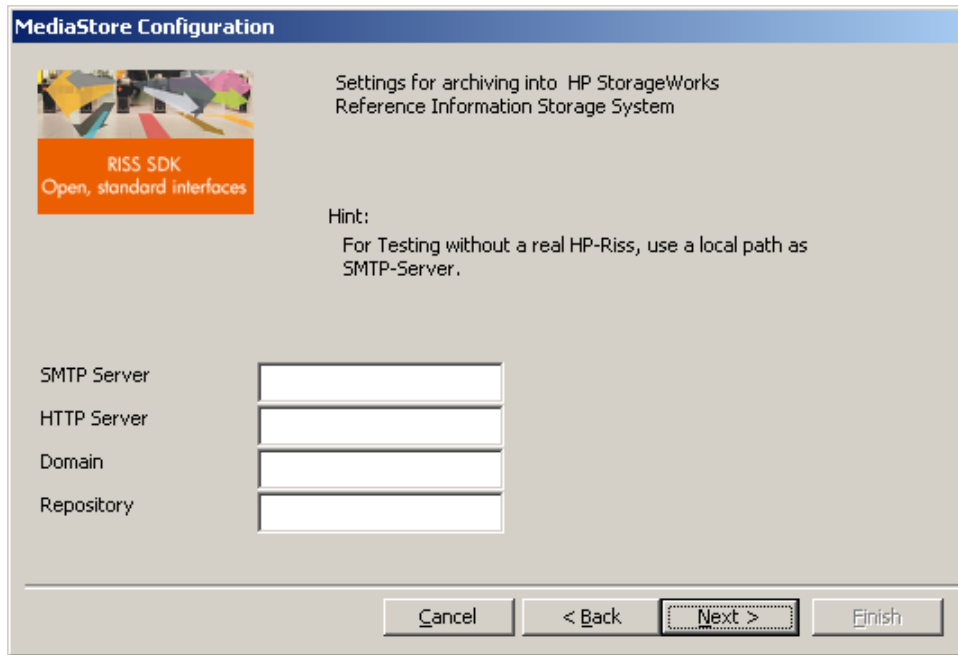
3. Click **Next** to pass the introducing dialog.
4. In the **MediaStore Configuration** window enter a name for your new MediaStore in the **Name of the new MediaStore** text-box. Then click **Next**.



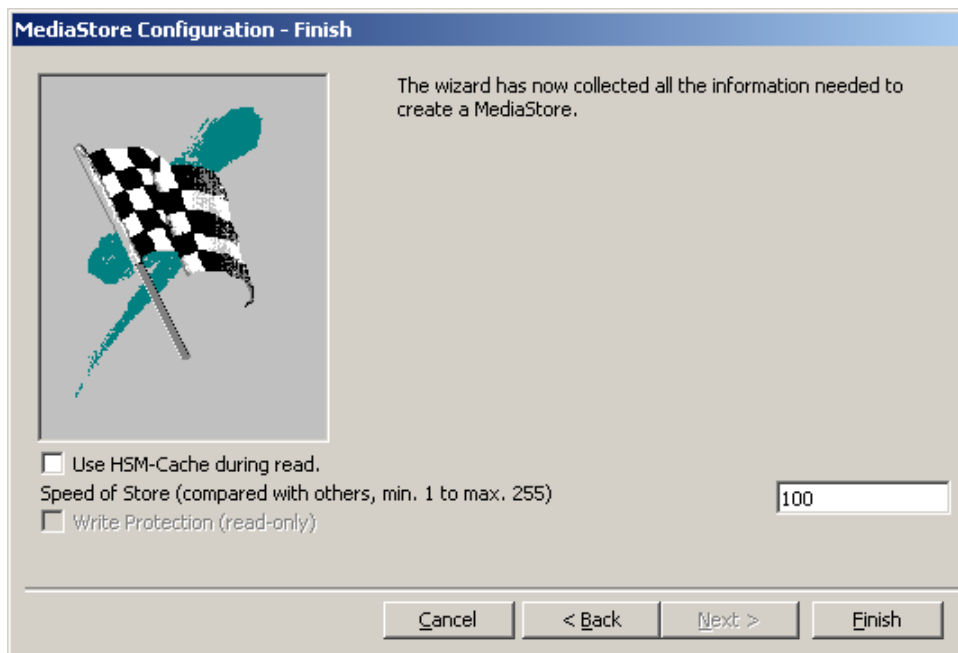
5. To configure the HP Riss MediaStore, select the relevant check box. Then click **Next**.



6. Enter your SMTP Server name, HTTP Server name, Domain and Repository in the relevant text boxes.  
**NOTE:** For testing without a real HP-Riss use a local path as SMTP Server.



9. If HSM should copy files into the cache when reading from this store, check **Use HSM-Caching during read**. **Speed of Store** text box represents the relative speed of this store compared to other stores. Click **Finish**.



10. Click **Close** in the **MediaStore Administration**. The MediaStore is ready.  
Finally restart the **PAM HSM Base Store operations** service to apply the settings.

## How to modify an existing MediaStore

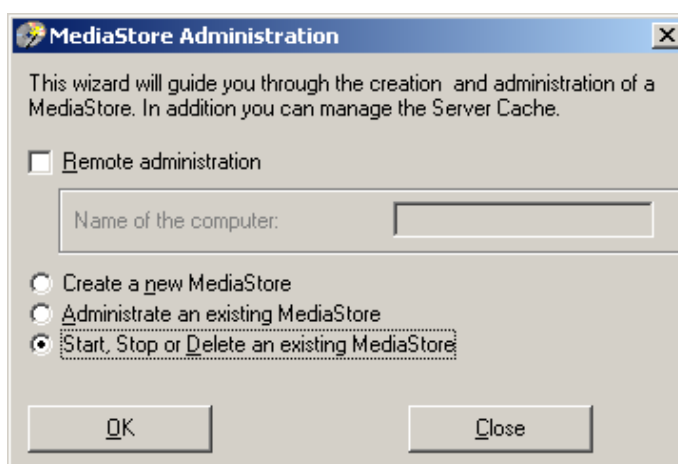
MediaStore CANNOT be modified when being used.

“Jukebox, Harddisk, Network” MediaStore type has to be stopped first. Only then it can be modified. All other kinds of stores run directly in HSM. For this reason HSM must be restarted to apply changes which have been made. To do so, restart the **PAM HSM Base Operations** service after modifying the MediaStore.

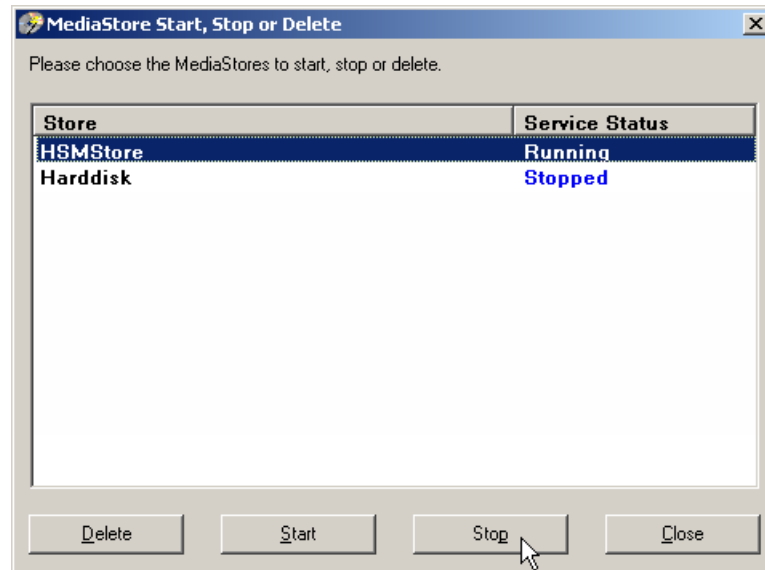
To stop the “Jukebox, Harddisk, Network” MediaStore:

1. Click **Start/Programs/PAM/HSM/PamMediaStoreAdministration**.
2. In the **MediaStore Administration** window select the **Start, Stop or Delete an existing MediaStore** option. Then click **OK**.

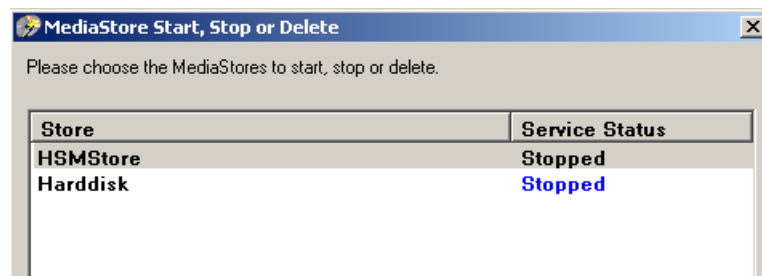
**NOTE:** If you have an existing MediaStore on another computer, select the **Remote administration** check box. With this feature you can connect to the respective remote computer and administer the MediaStore remotely.



3. In the **MediaStore Start, Stop or Delete** window select the store which you want to modify. Then click on the **Stop** button.

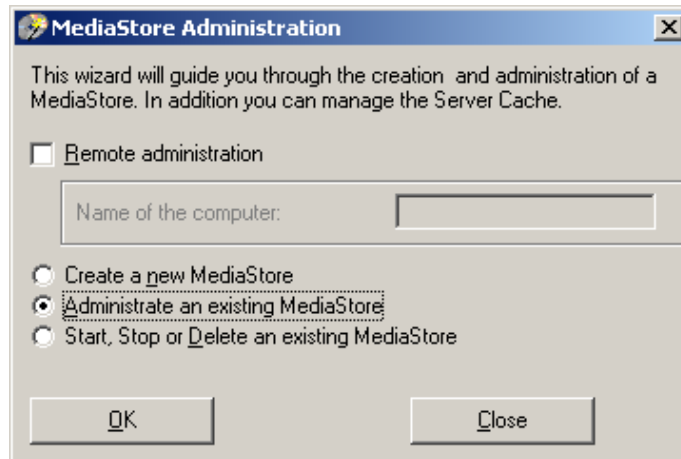


4. The service status for the store will change to STOPPED. Click **Close**. Now the store settings can be modified (see further).



To modify the store settings:

1. Click **Start/Programs/PAM/HSM/PamMediaStoreAdministration**.
2. In the **MediaStore Administration** window select **Administrate an existing MediaStore** and click **OK**.



3. Click **Next** to pass the introducing dialog.
4. In the down-drop box select the MediaStore which you want to modify and click **Next** to continue.  
To get more information about specific settings for different MediaStore types read the relevant chapter in this manual.

