



Metalogix Software

Install Guide for

Archive Manager SharePoint Edition

version 5.1

Installation Package

for Microsoft Windows Server 2003/2008

All Rights Reserved, including all rights concerning reproduction, copying or any other use or transmission of this document and its contents or parts of it. No part of this publication may, no matter in what form, be reproduced without written permission by Metalogix Software, passed on to third parties, edited by electronic retrieval systems, copied, distributed or used for public presentations. Metalogix Software reserves the right to change and update the content at any time. All data shown on screenshots is solely for demonstration purposes of the software, Metalogix Software is not responsible for this content.

*Trademark Archive Manager SharePoint Edition
Microsoft®, Microsoft Windows NT® and the names of other Microsoft products are registered trademarks of Microsoft Corporation.
All Rights Reserved. Other product names are being used for identification purposes of products and can be registered trademarks of the according manufacturers.*

Table of Contents

Introduction	3
What is Archive Manager SharePoint Edition	3
Process of archiving with Archive Manager using HSM store	3
Supported software environments	5
Technical requirements	5
Database.....	6
Configuration.....	6
Upgrading Archive Manager SharePoint Edition from version 4.2 or older	9
Installation	11
Express installation	13
Advanced installation	22
Post Installation Configuration.....	33
Context menu deployment	39
Troubleshooting – auto-retrieve not working.....	40
Planning and Tools tab	42

www.metalogix.com

Mail Support: www.metalogix.com/Support

Metalogix makes every effort to perform comprehensive testing but cannot guarantee, due to environmental differences, that all functions will work in every environment. It is always recommended that testing be conducted within your own environment to confirm functionality and compatibility.

Introduction

The **Installation package** makes the Archive Manager SharePoint Edition installation process very transparent and intuitive. This manual leads you through the dialogs of the installation wizard and describes the step-by-step installation of Archive Manager.

What is Archive Manager SharePoint Edition

Archive Manager SharePoint Edition- is a software solution for archiving documents transparently, while preserving the existing structure of folders and documents on SharePoint Portal (SPP) 2007 (SP1 or above) / 2010. It provides full version management with the ability to retrieve any of the versions or possibility to archive only major versions of documents. Archived documents are replaced with a shortcut, which takes up much less space, yet the integration into the SharePoint environment is transparent, for the end-user there is no difference between an archived and a non-archived document.

With **Archive Manager SharePoint Edition** you increase the capacity of fast and expensive storage media by using cheaper slower devices instead. Archive Manager improves system performance by reducing the SharePoint production database and the backup time for the SharePoint environment when it replaces SPP documents with shortcuts. All document metadata (including internal document IDs) are preserved. Standard SharePoint Search works both for archived and non-archived content. Workflow functionality is not affected by archiving. The users can still access archived documents directly from the SharePoint Portal.

The system is fully automated, and the administrator needs to specify only the attributes of its behavior. It enables centralized search through company data which is faster and more efficient than searching through different machines/systems.

With Archive Manager, you can archive documents in supported web parts of MS SharePoint either manually or automatically. Automatic archiving is done via scheduled tasks – jobs.

Process of archiving with Archive Manager using HSM store

Archive Manager SharePoint Edition transfers the desired document to the HSM system, which stores and retrieves documents. The HSM system works with a database because the information contained in the shortcut is stored in MS SQL. The HSM system passes down this document to a store specified by the administrator, which allows the document to be compressed “on the fly”. A shortcut of only a few kilobytes remains at document’s original location. This shortcut bears the same name and the same file extension as the original file and includes information about the new location of the archived document.

Users may work with archived documents as usual which means: when an archived document is reopened, **Archive Manager** passes the information from the shortcut onto the HSM system and the document is automatically restored from the store. For users it seems as if they are working in a normal environment.

The HSM system developed by Metalogix Software includes the Single Instance Store service (SIS) which enables versioning in cooperation with Archive Manager. Due to versioning the HSM system keeps track of any changes made to a document, e.g.:

- **who** modified the document;
- **when** this modification occurred;
- **what** was modified within the document.

With versioning enabled, the administrator may retrieve older versions. Even files whose shortcuts were permanently deleted from the SPP can be retrieved and restored. The Single Instance Store service also ensures that files from different locations that have identical content are stored in HSM just once. This feature saves significant space when storing documents.

Supported MS SharePoint Portal web parts

Supported SharePoint web parts can be accessed and archived with Archive Manager SharePoint Edition:

SharePoint 2007

Web part	Support	No support
Document Library	*	
Form Library	*	
Wiki Page Library		*
Picture Library	*	
Translation Management Library	*	
Report Library	*	
Data Connection Library	*	
Slide Library	*	
Announcements	*	
Contacts	*	
Discussion Board		*
Links		*
Calendar	*	
Tasks	*	
Project Tasks	*	
Issue Tracking	*	
Survey		*

SharePoint 2010

Web part	Support	No support
Document Library	*	
Form Library	*	
Wiki Page Library		*
Picture Library	*	
Asset Library	*	
Report Library	*	
Data Connection Library	*	
Slide Library	*	
Announcements	*	
Contacts	*	
Discussion Board		*
Links		*
Calendar	*	
Tasks	*	
Project Tasks	*	
Issue Tracking	*	
Survey		*

NOTE: Personal sites are also supported. It is possible to archive documents from them. The user running the *Remote service* (usually the SharePoint admin) has to be a *Site Collection Administrator* in the corresponding personal site.

Generally, Archive Manager is able to archive from sites where the user running the Archive Manager services is a *Site Collection Administrator*.

Supported software environments

Archive Manager SharePoint Edition is supported on:

- MS SharePoint Portal 2007 (SP1 or above) / 2010, WSS 3.0
- Windows 2003/2008, 64-bit version
- Windows 2003/2008, 32-bit versions

NOTE: If the product is installed on Windows 2008, 64-bit version, then make sure that Microsoft .NET 3.5 SP1 is installed. For all Windows Servers 2008 check the "Static Content" check box under Server Manager -> Server Roles-> Web Server (IIS) -> Role Services.

- Windows Storage Server 2003, 32-bit versions

Technical requirements

To run the installation you must have **.NET Framework 2.0 SP2** or higher and **MS SharePoint 2007 (SP1 or above) / 2010** installed. These prerequisites are also checked by the installation package.

No other software using the EBS (External Blob Storage) technology can be installed on the SharePoint server. The basic architecture of the EBS Technology allows only one EBS provider deployed.

You can query the status of the Archive Manager EBS provider component by running *RegisterEBSProvider.exe* in the main installation directory. Use the */s* parameter:

```
c:\Program Files (x86)\Metalogix\MAM4Share>RegisterEBSProvider.exe /s
```

The Archive Manager EBS provider is registered.

Database

Archive Manager SharePoint Edition works with MS SQL database. The setup can install the database or you can use an existing database.

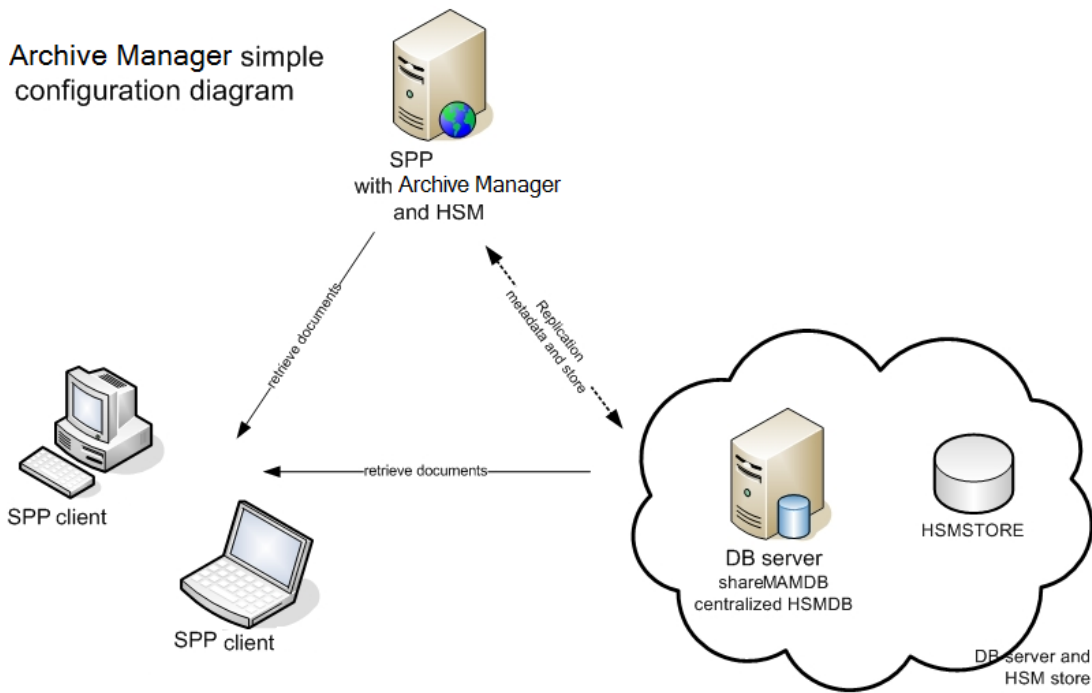
We recommend installing the latest version of MDAC (Microsoft Data Access Components). The installation wizard notifies the user if the latest MDAC (version 2.8) is not present. Since Windows Server 2008, MDAC has changed its name to WDAC which is included as part of the operating system.

Configuration

It is necessary to mention something about various types of configuration. There are basically two types:

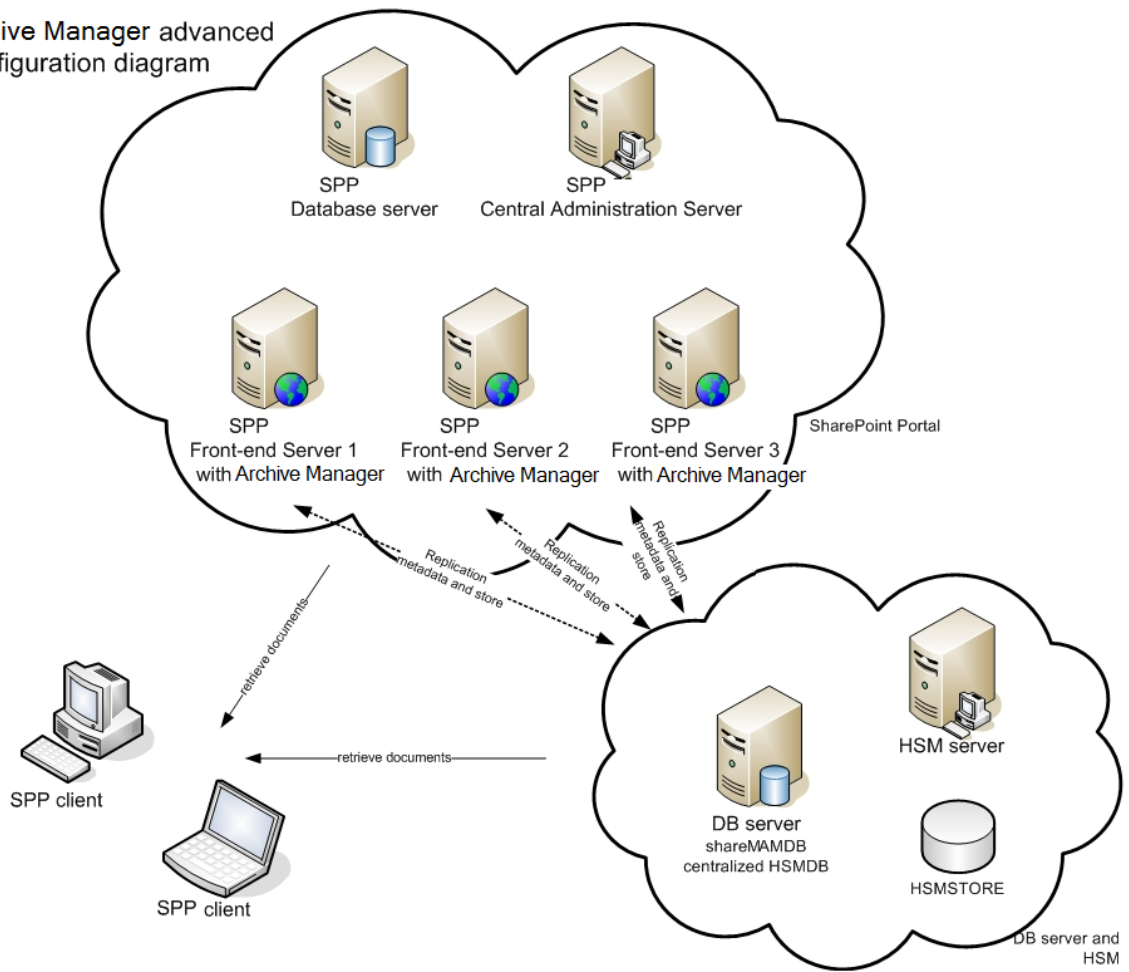
- Simple configuration (one SPP server)
- Advanced configuration (front-end and back-end SPP servers).

In case of simple configuration with one SPP server, Archive Manager and HSM can be both installed on the same machine, i.e. on your SPP server.



For advanced configurations, Archive Manager has to be installed on all front-end SPP servers using the same schema and database (see the following picture).

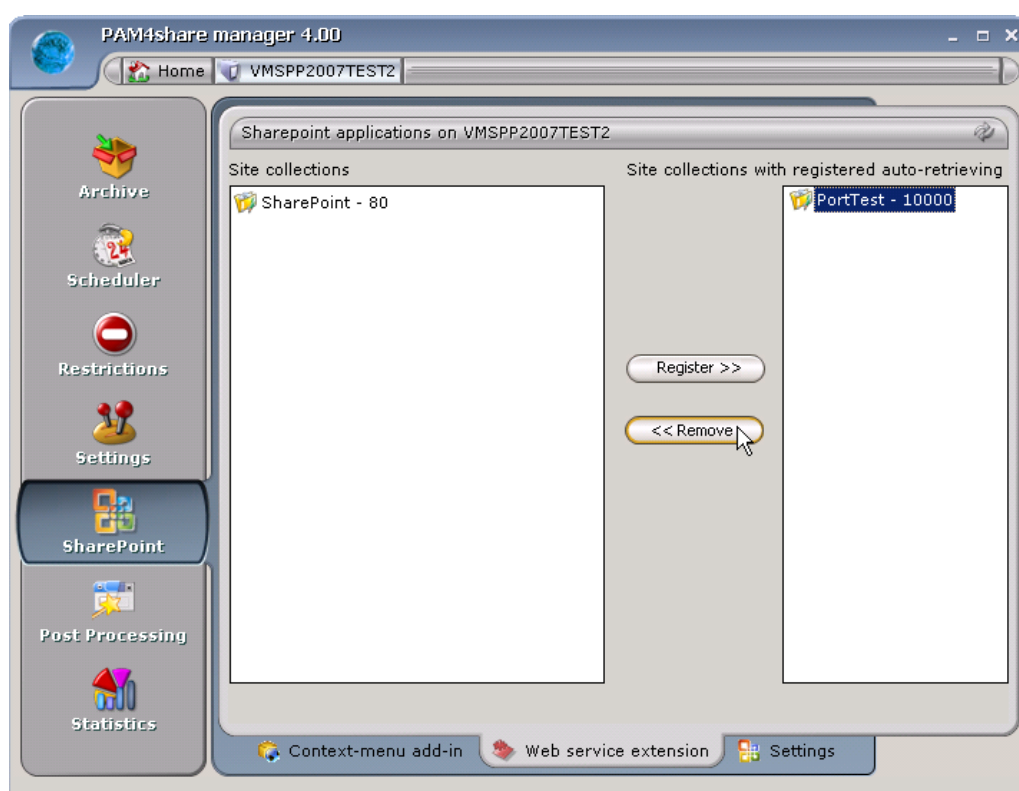
Archive Manager advanced configuration diagram



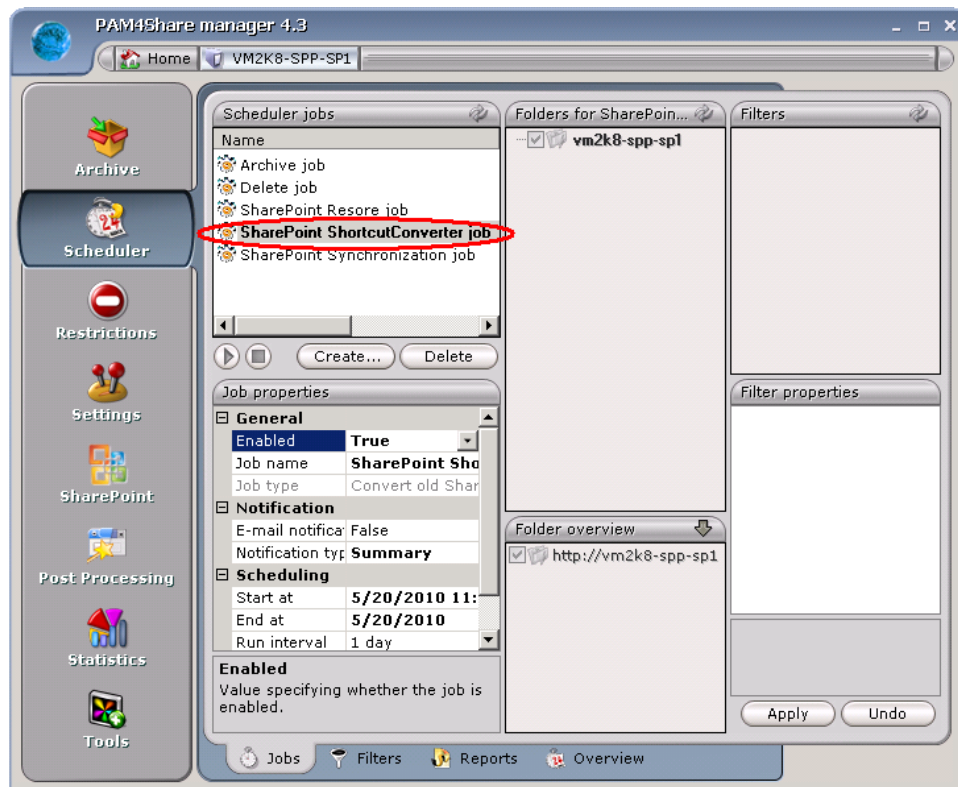
Upgrading Archive Manager SharePoint Edition from version 4.2 or older

In Archive Manager SharePoint Edition, version 4.3 the technology used for content externalization and auto-retrieving documents was changed to EBS (External Blob Storage). Updating from 4.2 or an older version has to be done carefully, following these steps:

1. **Before upgrading** remove the Archive Manager IIS Web Service Extension from IIS globally and from the separate SharePoint sites as well. To do so, open Enterprise Manager / SharePoint / Web service extension tab. Select all site collection in the right pane and click REMOVE.



2. **After upgrading:** The SharePointShortcutConverter job – In case you are upgrading from MAM4Share 4.2 or older, running this job once is mandatory (Enterprise Manager / Scheduler / Jobs tab). The job converts all old MAM4Share shortcuts into new EBS shortcuts. Otherwise it can happen that old SharePoint shortcut files will not be retrieved after opening.



You can check whether the EBS provider is installed correctly by running RegisterEBSProvider.exe with parameter /s, it will tell you the status of registration:

Example:

```
c:\Program Files (x86)\Metalogix\MAM4Share>RegisterEBSProvider.exe /s
```

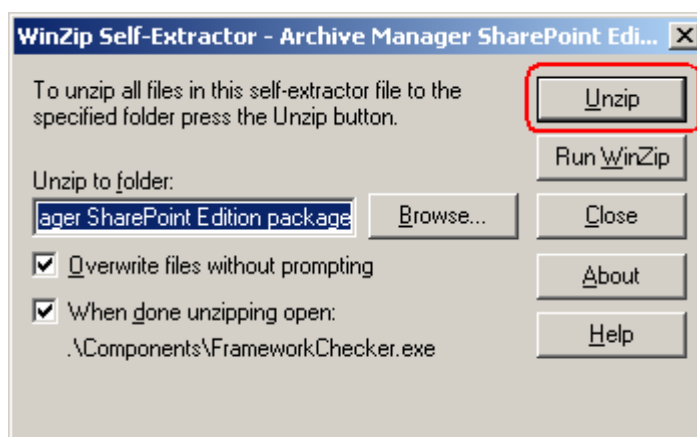
The Archive Manager EBS provider is registered.

EBS deployment is on front-end server level, it is active for all web applications on that server regardless on the date of creation. It doesn't matter whether they were created before or after the Archive Manager SharePoint Edition installation.

Installation

To run the Archive Manager SharePoint Edition setup, .NET Framework 2.0 SP2 or higher and MS SharePoint 2007 (SP1 or above) / 2010 has to be installed on the machine and the logged on user has to be a local admin and Farm Admin.

1. Run the Archive Manager self-extracting package. As the default it unzips to **C:\Metalogix \Archive Manager SharePoint Edition package** but you can use the **Browse** button to change the directory. Click **Unzip**.
NOTE: It is a good practice to always unzip to the same directory. This is especially important when updating the product. Keeping the installation in the same folder helps you to run the update always with the same setting.

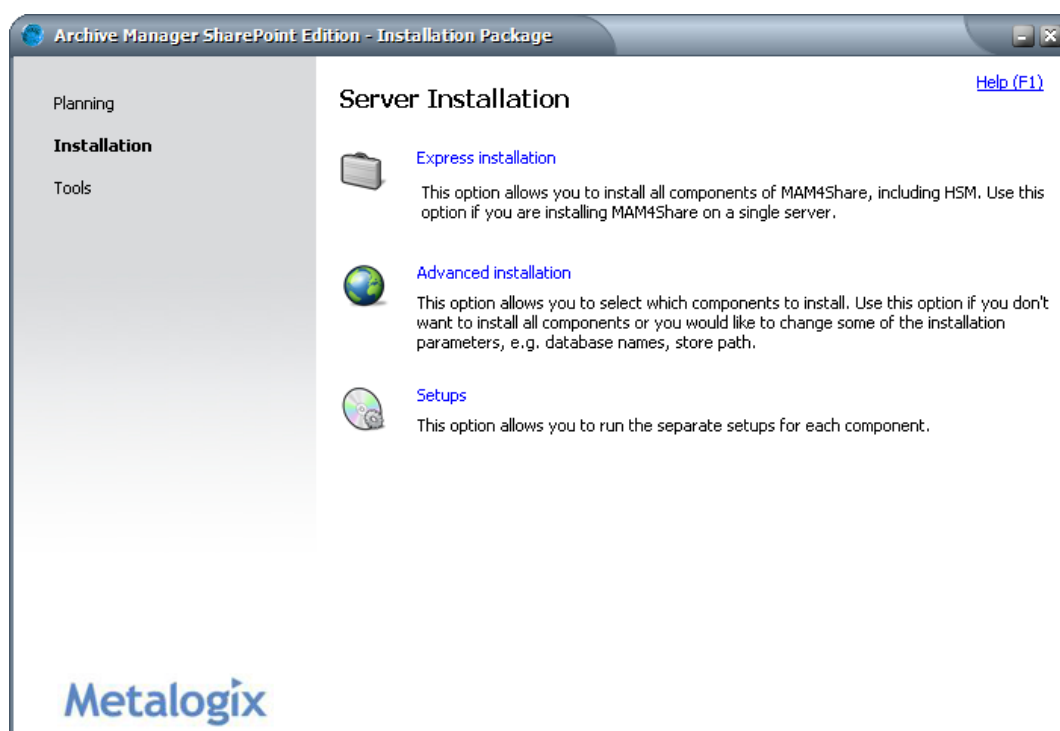


2. When files unzip, click **OK**.

3. The wizard opens as default on the **Installation** section where you can choose between two types of installation:
- **Express installation** – installs all components on a single server
 - **Advanced installation** – allows you to select which components you want to install. You can also use this option also when you want to change some of the installation parameters

First we detail all steps of the *Express installation*. The second section of the manual deals with *Advanced installation*.

NOTE: Under the **Setups** option you can find separate setups for Archive Manager components. These setups can be deployed in specific cases when you want to install components of Archive Manager on separate machines.



Express installation

To install Archive Manager SharePoint Edition with all its components on a single server:

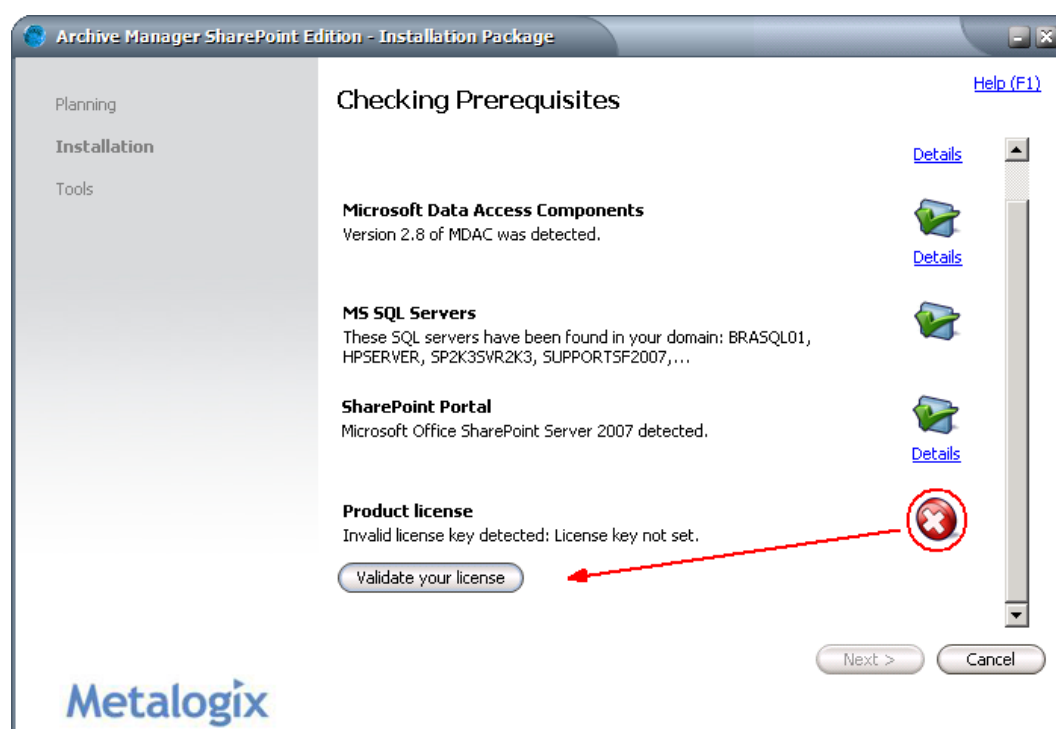
4. Click **Express installation**. Firstly, the wizard checks prerequisites:

- IIS
- MDAC (WDAC)
- available MS SQL servers

NOTE: Install package can help you to download, install and configure the MS SQL Express 2005 database.

- MS SharePoint Server
- License

IIS and MDAC are recommended to be installed. MS SQL database can be installed by the setup itself. Click **Next**.

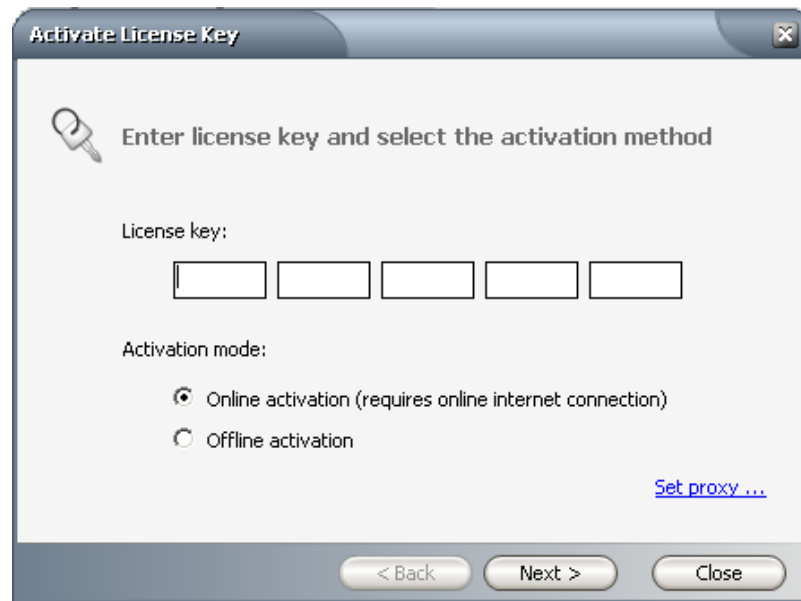


Before proceeding with installation, you need to apply the license. To do so, click **Validate your license** button. There can be two different situations:

- Archive Manager server has an internet connection (a)
- Archive Manager server has NO internet connection (b)

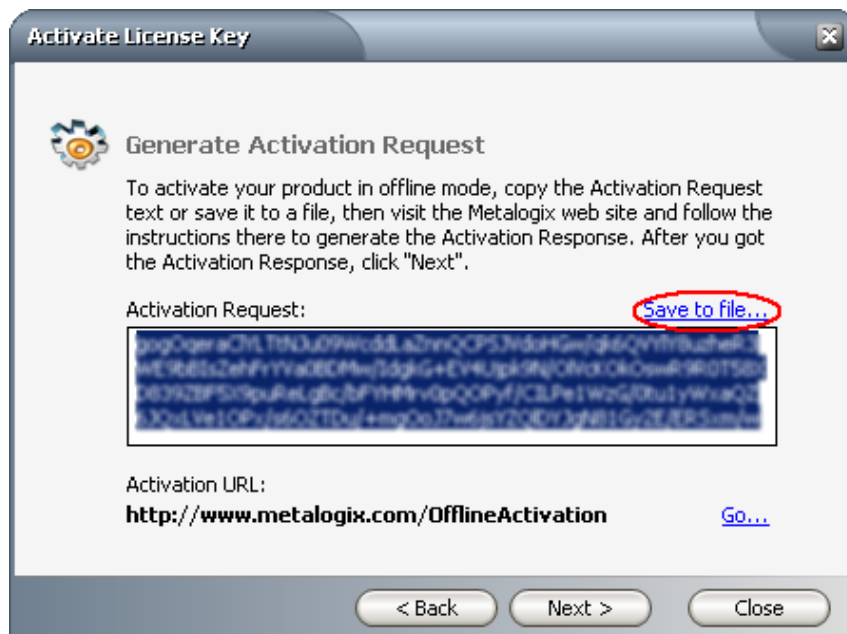
a) If the server has an internet connection, follow the next steps:

- Enter your license key and click **Next**.
NOTE: If the internet access is filtered out by proxy on the Archive Manager server, click the **Set proxy** link to enter the respective parameters.
- License will be validated and you can continue the installation.



b) If the server has NO internet connection, follow the next steps:

- Enter your license key.
- Select the **Offline activation** radio button and click **Next**.
- Copy the *Activation request* text from the **Activation request** text box or save it as a file (click the Save to file link)



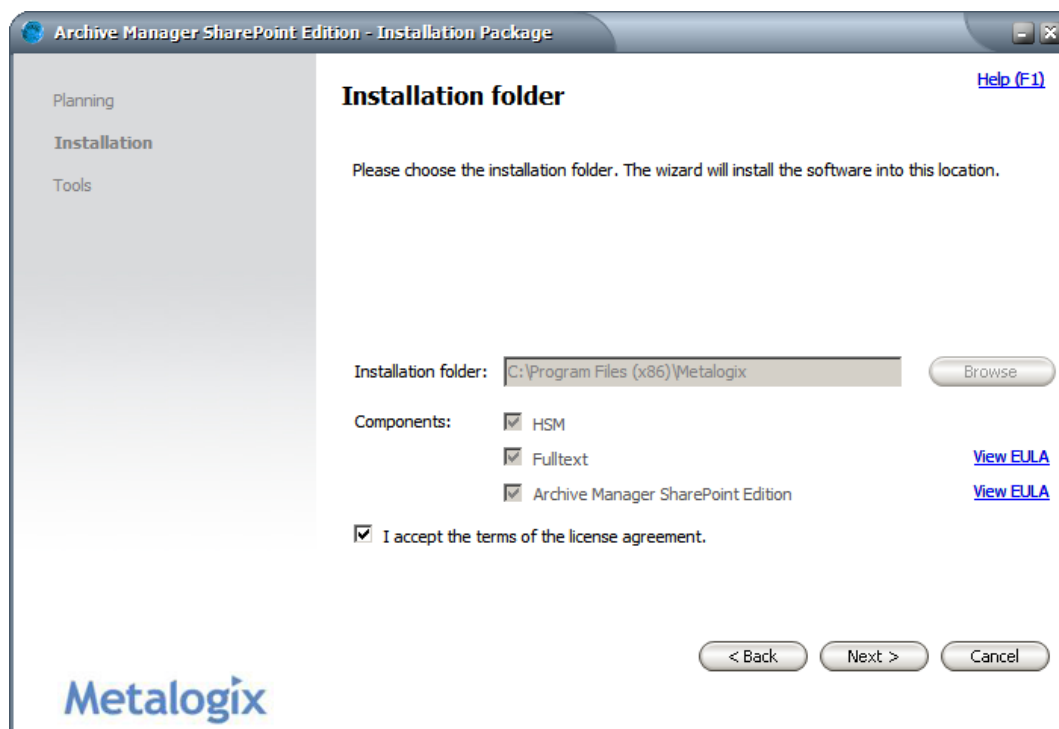
- On the machine with internet access open the Metalogix Activation URL: <http://www.metalogix.com/OfflineActivation>
- Paste the *Activation Request* text you have copied or **Browse** for the file you have saved and click **Activate**
- *Activation text* is generated. Again copy the text or save it as a file

- Back on the Archive Manager server click **Next** to proceed to the **Enter your Activation Response** dialog. Paste the *Activation text* you have copied from the Metalogix web page or load the file.
- Click **Next**, then **Finish**.

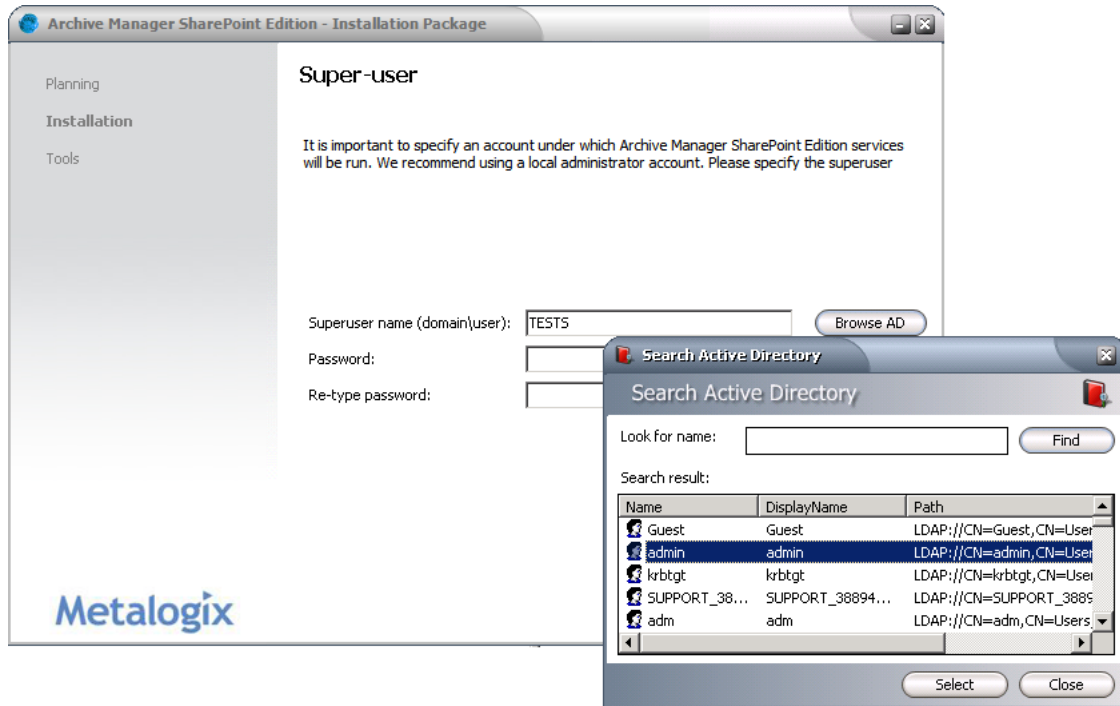
NOTE: In case your Archive Manager server has no Internet connection permanently, you will be asked to revalidate your license periodically. It is the same process as described in the part b) above.

When you have successfully applied the license, click **Next** in the install wizard to continue the installation.

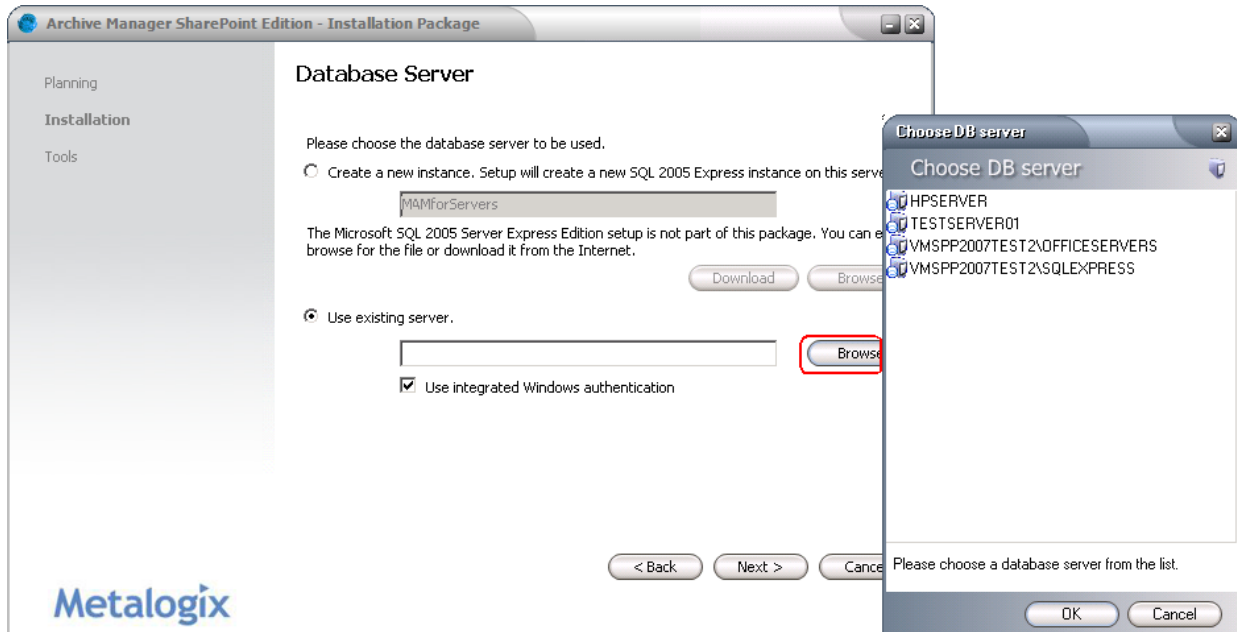
5. In the next dialog you can choose the installation folder. As the default the product installs in **C:\Program Files\Metalogix**. The installation folder can be changed using the **Browse** button. Click **Next**.



- Specify the super-user account under which the services will be running. This super-user should be a Farm admin account. Enter it as 'domain\user' or use the **Browse AD** button to find the super-user. In the *Search Active Directory* pop-up window click **Find** to display available users. Select the super-user account from the list. Back in the installation dialog fill in its password and click **Next**.

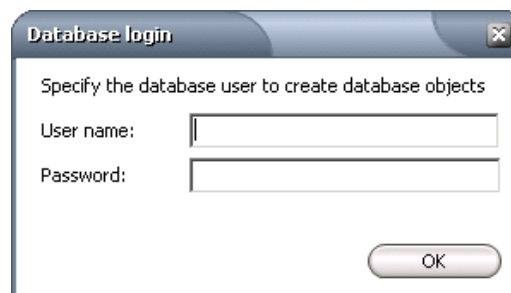


7. In the next step specify the database server to be used by Archive Manager. Basically there are two options: (1) to create a new SQL 2005 Express instance or (2) to use an existing database server:

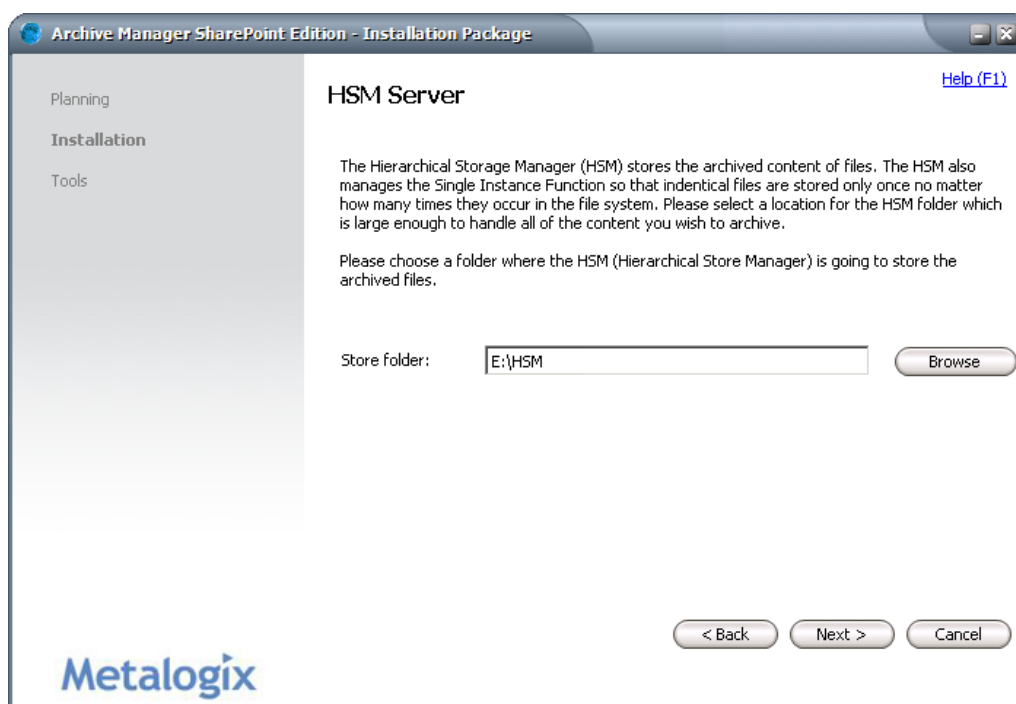


- To create a new SQL 2005 Express instance, check the **Create a new instance** option and enter the name for the database server instance in the text box. The MS SQL 2005 Server Express Edition is **not** a part of the Archive Manager installation package, however. You have to either click **Download** to download the setup file from the Internet or **Browse** for it if you have it saved locally.
- To use an existing database check the **Use existing server** option. In the text box enter the name of the existing DB server or use the **Browse** button to locate it. If the logged-on user has appropriate rights to administer the chosen SQL server, you can just check the **Use Integrated Windows authentication** check box to log on to that database server.

NOTE: If the **Use Integrated Windows authentication** check box was not checked, a pop-up appears. To proceed further you will have to specify the database user under which the database objects will be created. (This user can be different from the database user used by Archive Manager.)

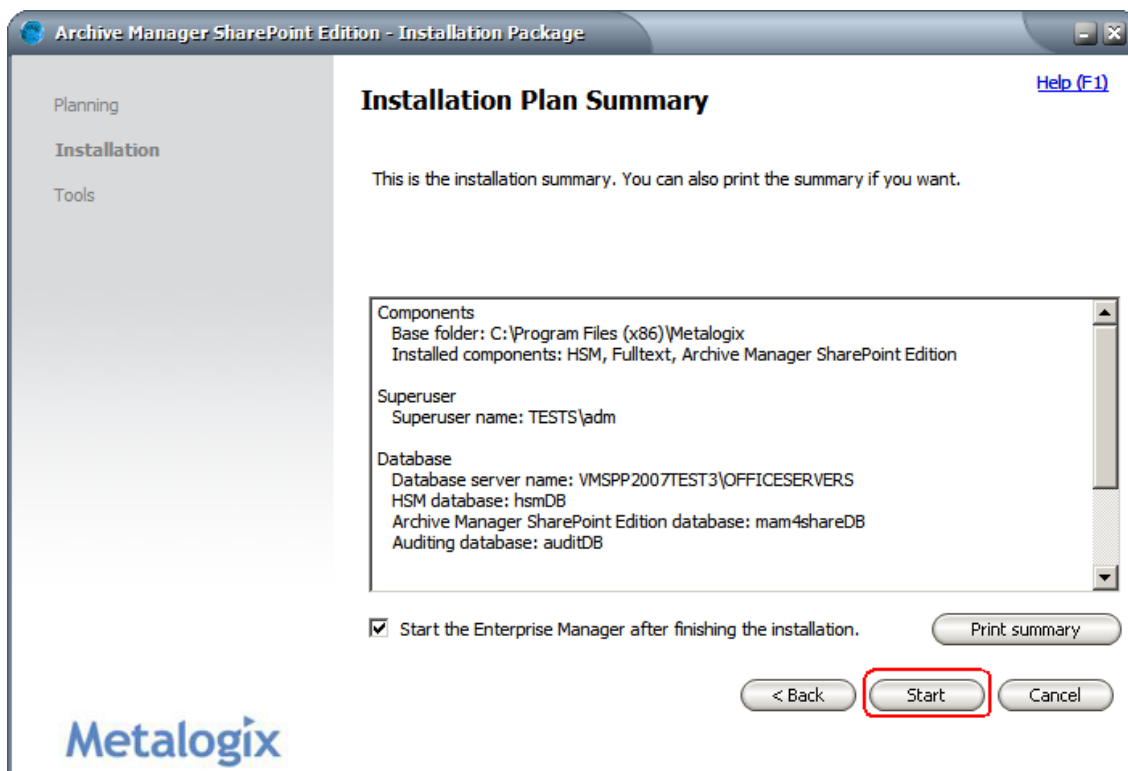


8. In the **HSM server** dialog choose the folder where archived files will be stored. The location of HSM needs to be a drive with plenty of free space to keep the stored files. The default folder is **C:\HSM**. As the location of HSM needs to be a drive with plenty of free space on strong hardware we RECOMMEND CHANGING the location by clicking the **Browse** button. After you have specified a suitable location click **Next**.

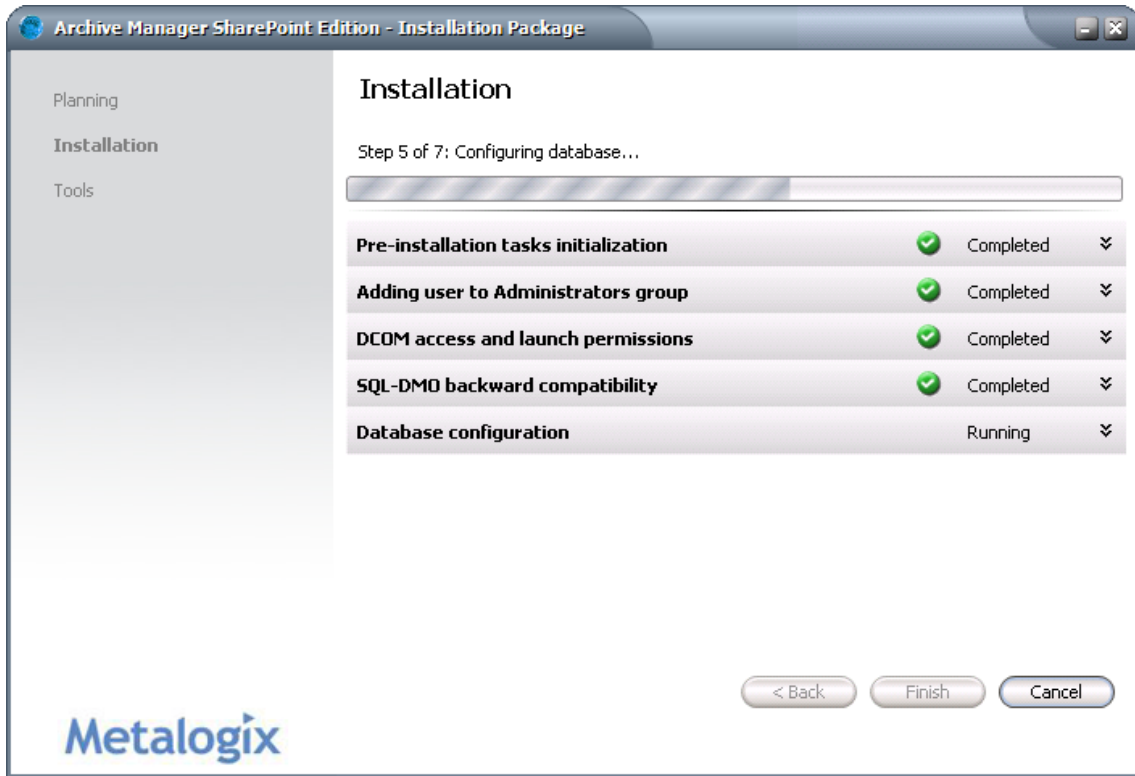


9. The installation summary displays settings you have specified in previous steps. It is useful to print the summary to document all your installation settings. Then click the **Start** button to start the installation.

NOTE: If the **Start the Enterprise Manager...** check box is marked, the Enterprise Manager – the administrative application of Archive Manager - will be launched automatically when the installation finishes.



10. Wait while the components are being installed.



When the installation finishes click **Finish**. If any step displays warning you can use double arrows to show/hide detailed info and try the reinstallation. If it does not help the given step has to be executed manually – please follow the instructions in the warning.

To complete the installation, see the “Post Installation Configuration” section.

NOTE: In case of Windows Server 2008, please make sure that “Static Content” under Server Manager -> Server Roles-> Web Server (IIS) -> Role Services is checked.

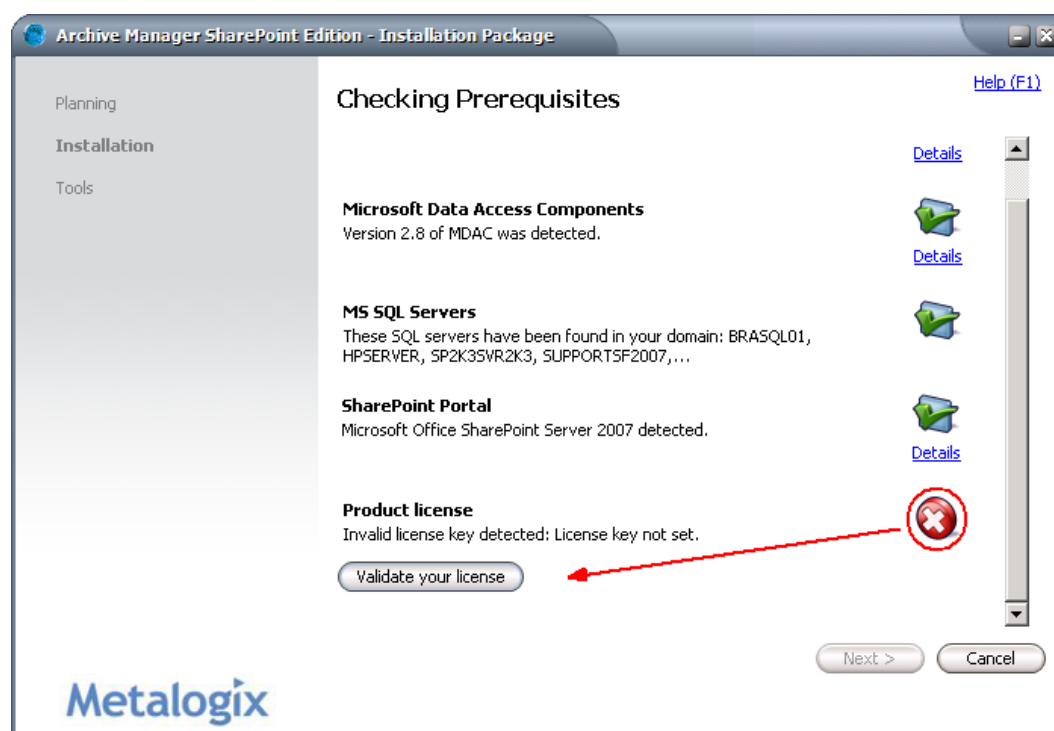
Advanced installation

Advanced installation option allows you to select the components that you want to install. Use this option when not all components of Archive Manager SharePoint Edition are to be installed on one machine, e.g. if you have a separate HSM server and you want to install just Archive Manager without HSM. Using the *Advanced installation* the administrator can also change some of the installation parameters.

1. Click **Advanced installation**. Firstly, the wizard checks prerequisites:
 - IIS
 - MDAC (WDAC)
 - available MS SQL servers

NOTE: Install package can help you to download, install and configure the MS SQL Express 2005 database.
 - MS SharePoint
 - License

We recommend that you install IIS and MDAC. MS SQL database can be installed by the setup itself. Click **Next**.



Before proceeding with installation, you need to apply the license. To do so, click **Validate your license** button. There can be two different situations:

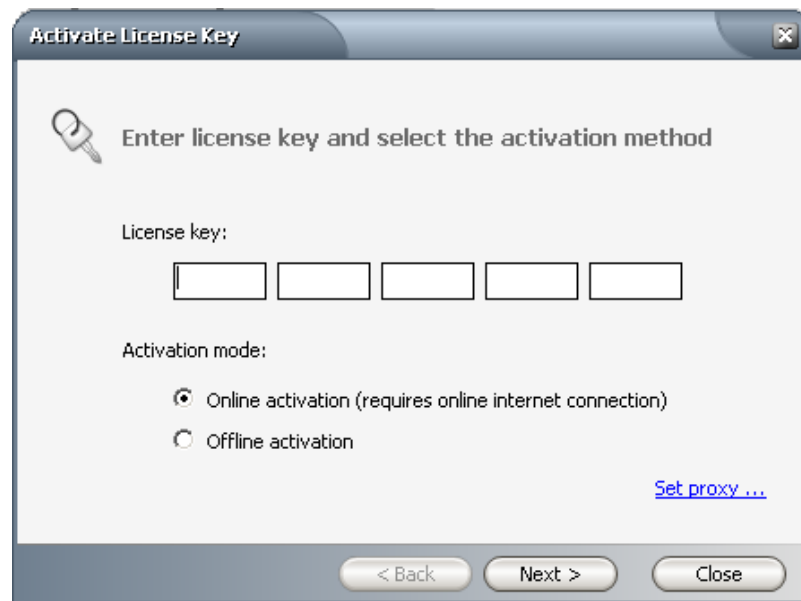
- Archive Manager server has an internet connection (a)
- Archive Manager server has NO internet connection (b)

a) If the server has an internet connection, follow the next steps:

- Enter your license key and click **Next**.

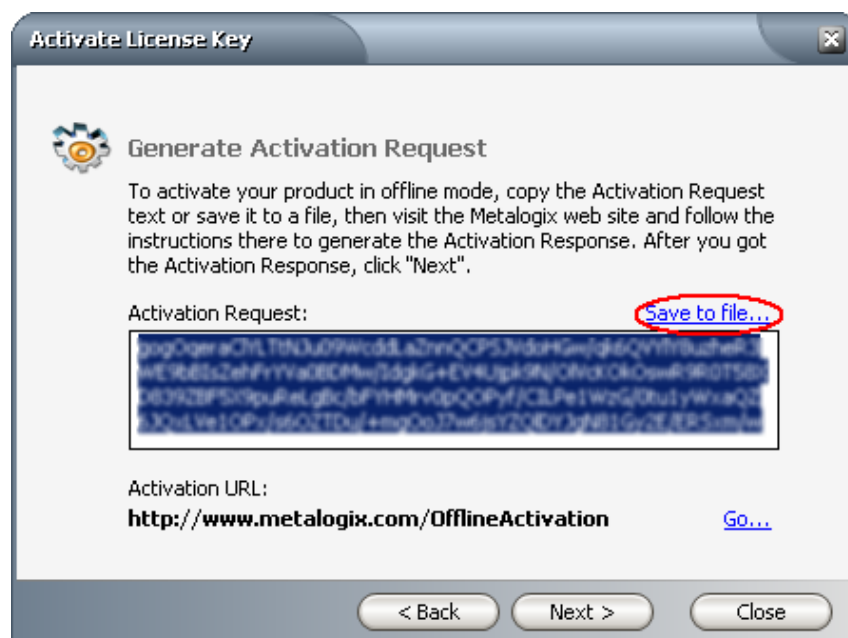
NOTE: If the internet access is filtered out by proxy on the Archive Manager server, click the **Set proxy** link to enter the respective parameters.

- License will be validated and you can continue the installation.



b) If the server has NO internet connection, follow the next steps:

- Enter your license key.
- Select the **Offline activation** radio button and click **Next**.
- Copy the *Activation request* text from the **Activation request** text box or save it as a file (click the *Save to file* link)



- On the machine with internet access open the Metalogix Activation URL: <http://www.metalogix.com/OfflineActivation>

- Paste the *Activation Request* text you have copied or **Browse** for the file you have saved and click **Activate**
- *Activation text* is generated. Again copy the text or save it as a file
- Back on the Archive Manager server click **Next** to proceed to the **Enter your Activation Response** dialog. Paste the *Activation text* you have copied from the Metalogix web page or load the file.
- Click **Next**, then **Finish**.

When you have successfully applied the license, click **Next** in the install wizard to continue the installation.

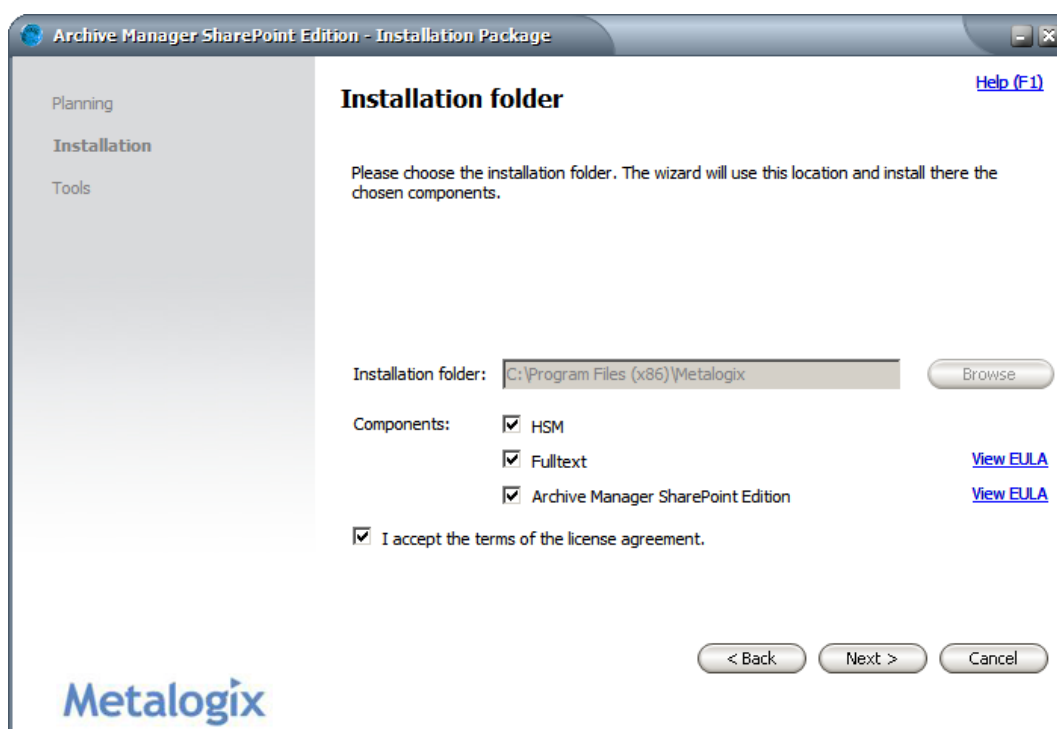
2. In the next dialog you can choose the installation folder. As the default the product installs in **C:\Program Files\Metalogix**. The installation folder can be changed by using the **Browse** button.

Further select the components you want to install on the local machine. Check:

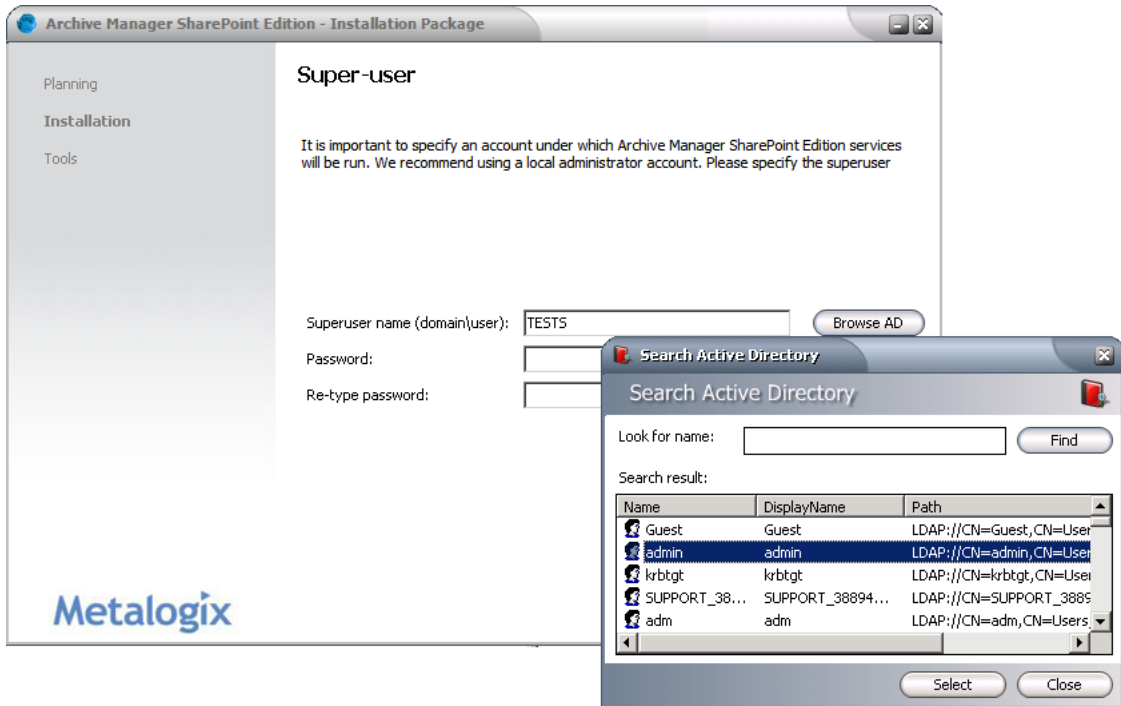
- **HSM** to install it on the local machine
NOTE: HSM can be used by all Archive Manager products. It means that if you already have an HSM storage installed with other Archive Manager products, you may use it for Archive Manager SharePoint Edition as well.
If you do not check to install HSM, you will have to specify the HSM server later, i.e. the computer where HSM is already installed
- **Fulltext** if you want to install it on the local machine. Fulltext search service ensures fast and effective searching through documents of various format

and/or
- **Archive Manager SharePoint Edition** to install it on the local machine

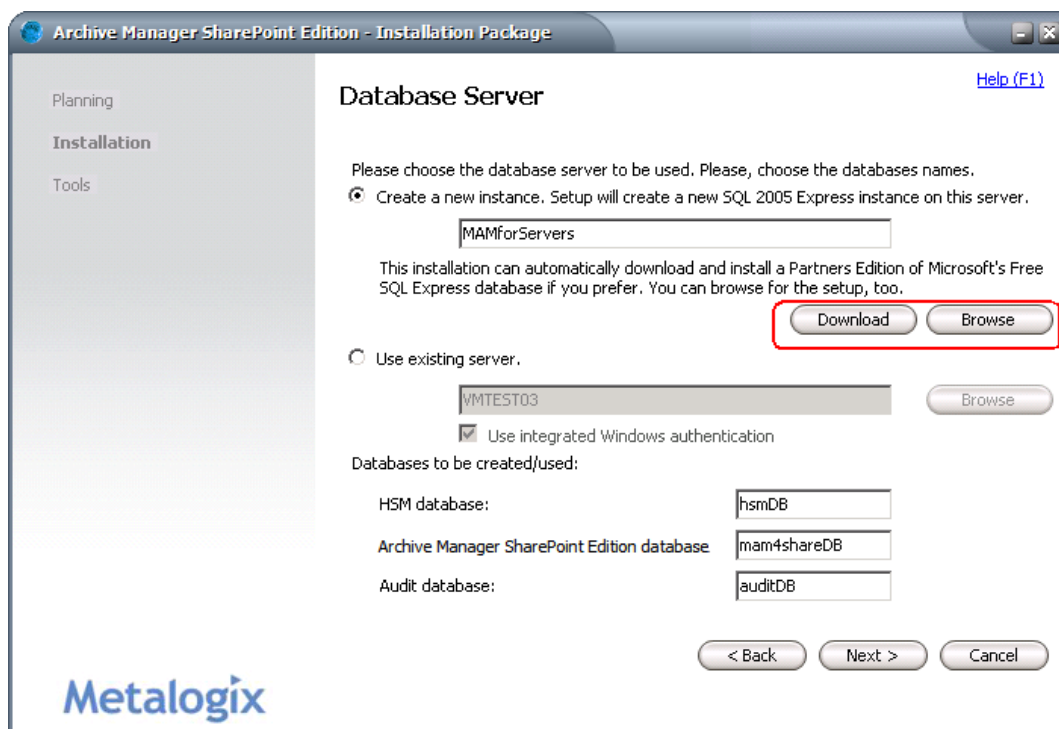
Click **Next**.



- Specify the super-user account under which the services will be running. This super-user should be a Farm admin account. Enter it as 'domain\user' or use the **Browse AD** button to find the super-user. In the *Search Active Directory* pop-up window click **Find** to display available users. Select the super-user account from the list. Back in the installation dialog fill in its password and click **Next**.

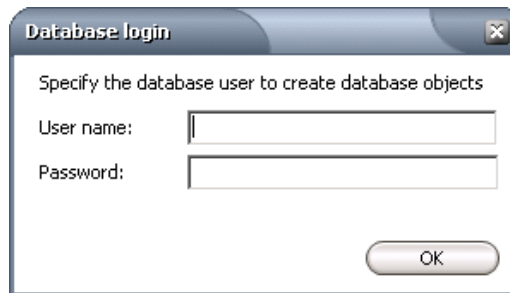


4. As a next step specify the database server to be used by Archive Manager. Basically there are two options: (1) to create a new SQL 2005 Express instance or (2) to use an existing database server:
 - To create a new SQL 2005 Express instance, check the **Create a new instance** option and enter the name for the database server instance in the text box. However, the MS SQL 2005 Server Express Edition is **not** a part of the Archive Manager SharePoint Edition installation package. You have to either click **Download** to download the setup file from the Internet or **Browse** for it if you already have it saved locally.



- To use an existing database check the **Use existing server** option. In the text box enter the name of the existing DB server or use the **Browse** button to locate it. If the logged-on user has appropriate rights to administer the chosen SQL server, you can just check the **Use Integrated Windows authentication** text box for logging on to that database server.

NOTE: If the **Use Integrated Windows authentication** check box was not checked, a pop-up appears. To proceed further you will have to specify the database user under which the database objects will be created. (This user can be different from the database user used by Archive Manager.)

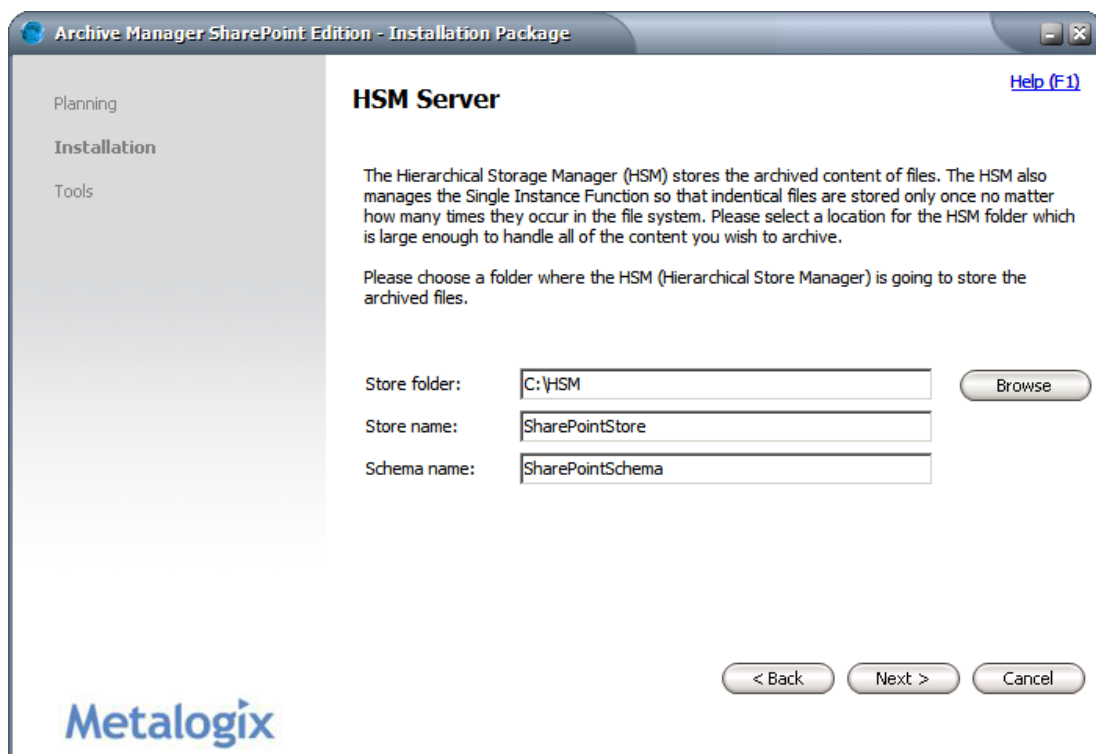


A screenshot of a 'Database login' dialog box. The title bar reads 'Database login' with a close button. The main text says 'Specify the database user to create database objects'. Below this, there are two input fields: 'User name:' and 'Password:'. An 'OK' button is located at the bottom right of the dialog.

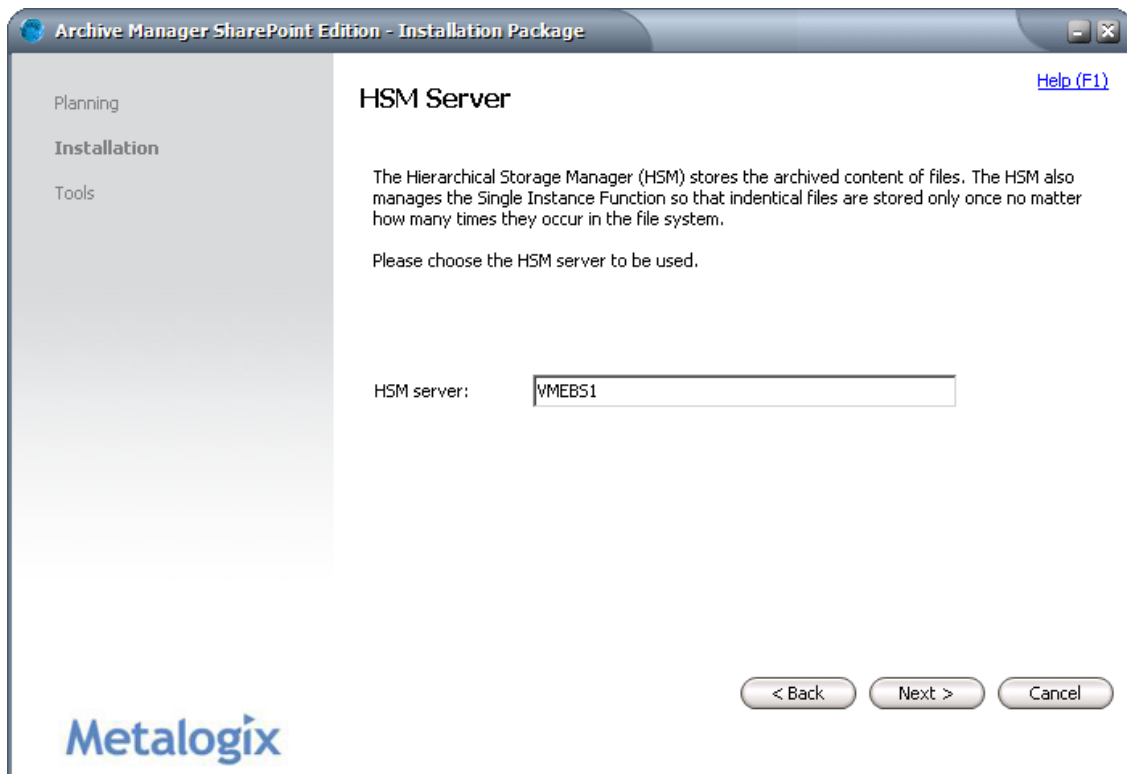
The default names for databases used by our product are filled in the **HSM database** text box (if you have chosen to install HSM as well), the **Archive Manager database** text box and **Audit database** text box. You can rewrite the names if you wish. The databases will be created on the chosen server. Click **Next**.

5. In the **HSM server** dialog specify the location where the archived files will be stored:
 - If you have chosen to install HSM component on the local machine (see the step 2 of the *Advanced installation*), specify the folder where archived files will be stored. Note that the location of HSM needs to be a drive with plenty of free space to keep the stored files. The default folder is **C:\HSM**. As the location of HSM needs to be a drive with plenty of free space on strong hardware we RECOMMEND CHANGING the location by clicking the **Browse** button.

The **Store name** and **Schema name** text boxes display default names of the store and schema which will be created. You can change the names if you wish. Click **Next**.



- If you have chosen not to install HSM on the local machine (see step 2 of the *Advanced installation*), the HSM server dialog is different. In the **HSM server** text box you need to enter the name of the machine where HSM is installed. Finally click **Next**.



6. If you have chosen to install the fulltext service (see step 2 of the *Advanced installation*), the **Fulltext search settings** dialog will be displayed. There are two fulltext search engines you can install:

- **Archive Manager Search Server**

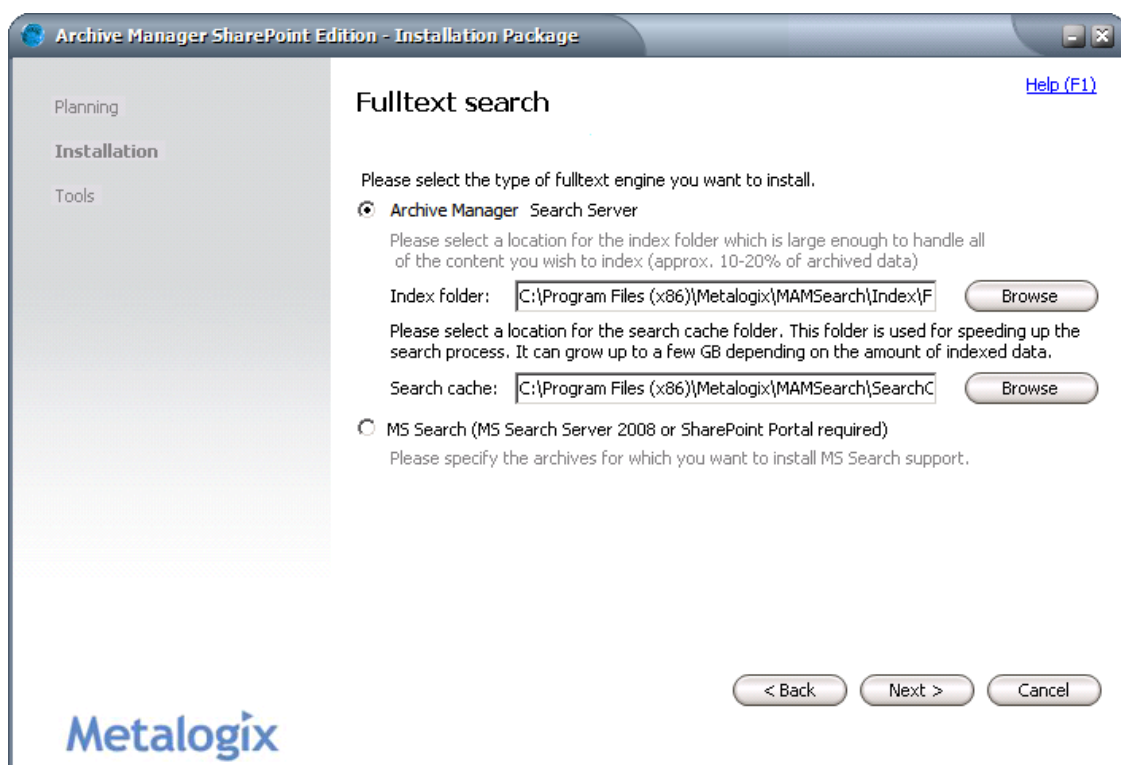
If you have chosen this fulltext search engine, in the **Index folder** text box specify the folder where the search index will be stored. It has to be a location with plenty of free space as the size of the index is about 10% size of the whole archive.

In the same way specify the **Search cache** folder in the appropriate text box. The default location of these folders is under **C:\Program Files\Metalogix\Fulltext**. To change it, use the **Browse** buttons.

IMPORTANT: To use the Archive Manager Search Service, you need to upload and enable the appropriate post-processing plugin. It is done after installation in the Enterprise Manager console. The plugin is called **PFPLuceneIndexPlugin** and can be found in **C:\Program Files \ Common Files \ Pam \ Services \ PamPostProcessing \ Plugins**.

- **MS Search**

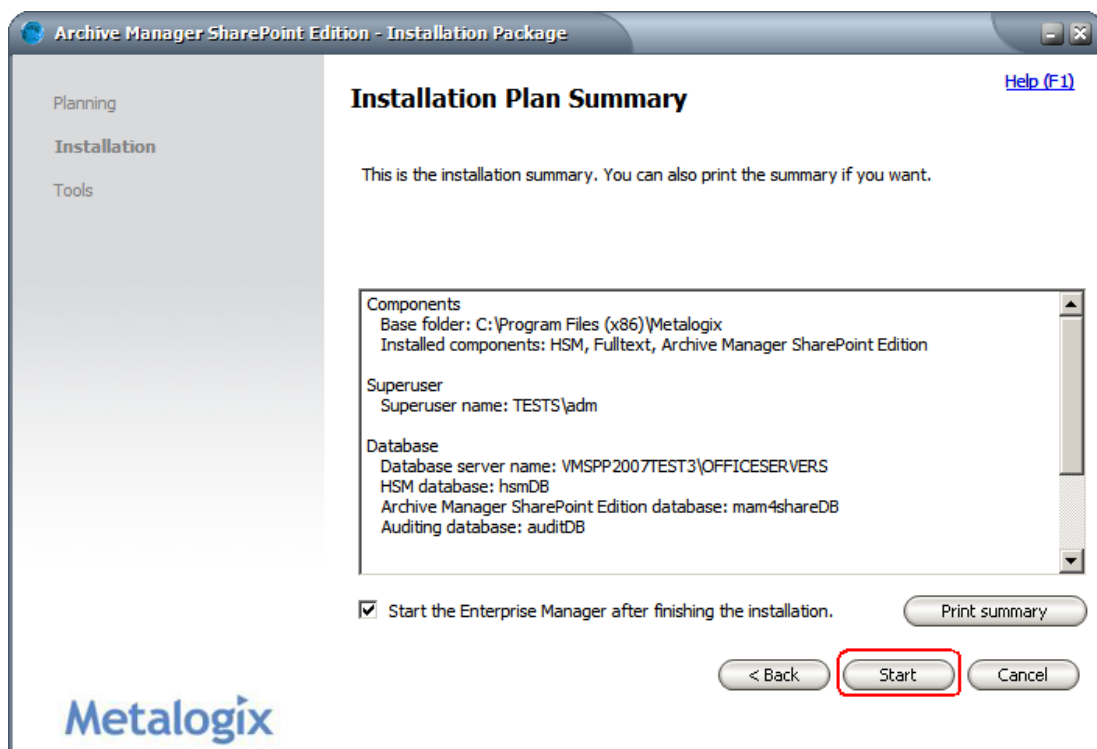
Prerequisites: MS Search Server 2008 or SharePoint Portal



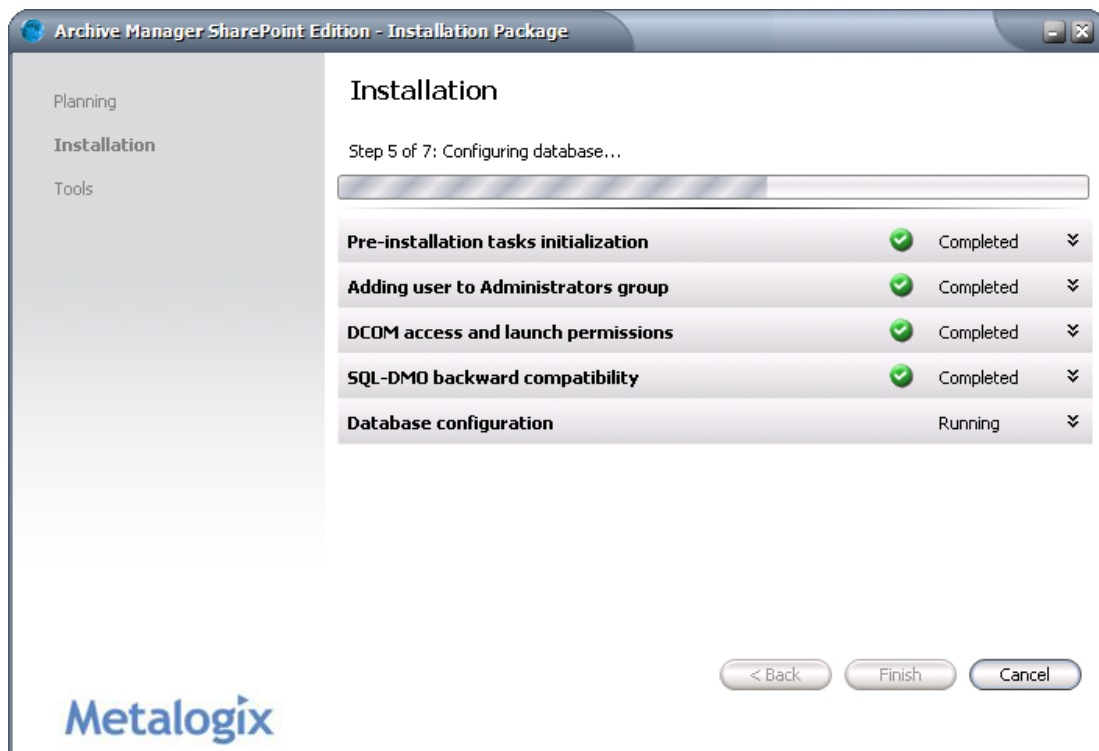
- Now allow installation package to add Archive Manager components (auditing) to the Windows Firewall Exception list. Archive Manager components will be then able to communicate through the firewall. Click **Next**.



- The installation summary displays settings you have specified in previous steps. It is useful to print the summary. Click **Start** button to start the installation.
NOTE: If the **Start Enterprise Manager...** is checked, the Enterprise Manager – administrative application of Archive Manager - will be launched when the installation finishes.



9. Wait while the components are being installed.



When the installation finishes click **Finish**. If any step displays warning you can use double arrows to show/hide detailed info and try the reinstallation. If it does not help the given step has to be executed manually – please follow the instructions in the warning.

To complete the installation, see the “Post Installation Configuration” section.

NOTE: In case of Windows Server 2008, please make sure that “Static Content” under Server Manager -> Server Roles-> Web Server (IIS) -> Role Services is checked.

Post Installation Configuration

After installation it is necessary to configure:

- A. SharePoint connection
- B. IIS

A) Right after the installation the Enterprise Manager pops-up. When the Manager is started for the first time, it will ask you to configure the SharePoint connection in the pop-up dialog:

Configure your SharePoint connection

Address:

Target type: SharePoint site SharePoint server

Connection type:

Connect as: Current service user
 Different user
 Password:

< Back Next > Cancel

Enter the SharePoint URL in the **Address** text box.

Select the correct **Target type** – SharePoint site or SharePoint server.

Under **Connect as** choose to connect to the SharePoint either with the current user or different user. The user must be the *Site Collection Administrator*.

Click **Next**.

In the next dialog define which SPP versions of the documents (Minor and/or Major) should be archived.

Check the **Replace the latest version with shortcut** if you want to create shortcut for the latest version as well. If the check box is not selected the latest version of the document won't be replaced by the shortcut. This version will not be displayed in the Manager as archived.

Document archiving settings

Versions to archive:

Replace the latest version with shortcut:

< Back Finish Cancel

Finally click **Finish**. Then you can configure your archiving settings, create jobs and start archiving with **Enterprise Manager** (see the “Archive Manager SharePoint Edition, admin manual”).

B) In the following lines we describe IIS7 configuration. For IIS6 the process is similar. The FilePAMWebService handler mapping has to be configured in the following way:

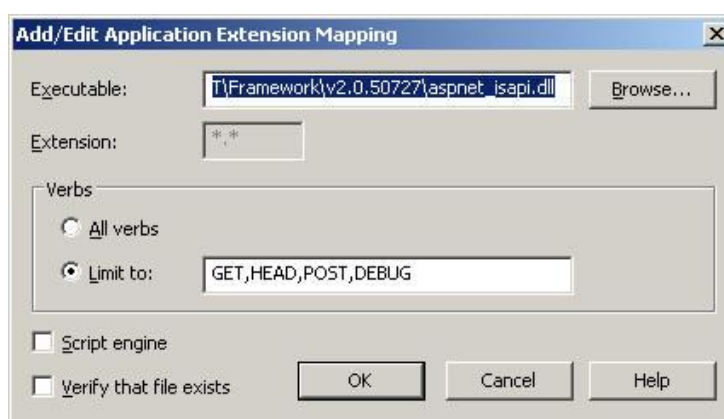
- Apply to ‘*.*’
- Apply to files and folders

NOTE: When adding *.* application extension mapping, specify the following settings:

Limit to: GET,HEAD,POST,DEBUG

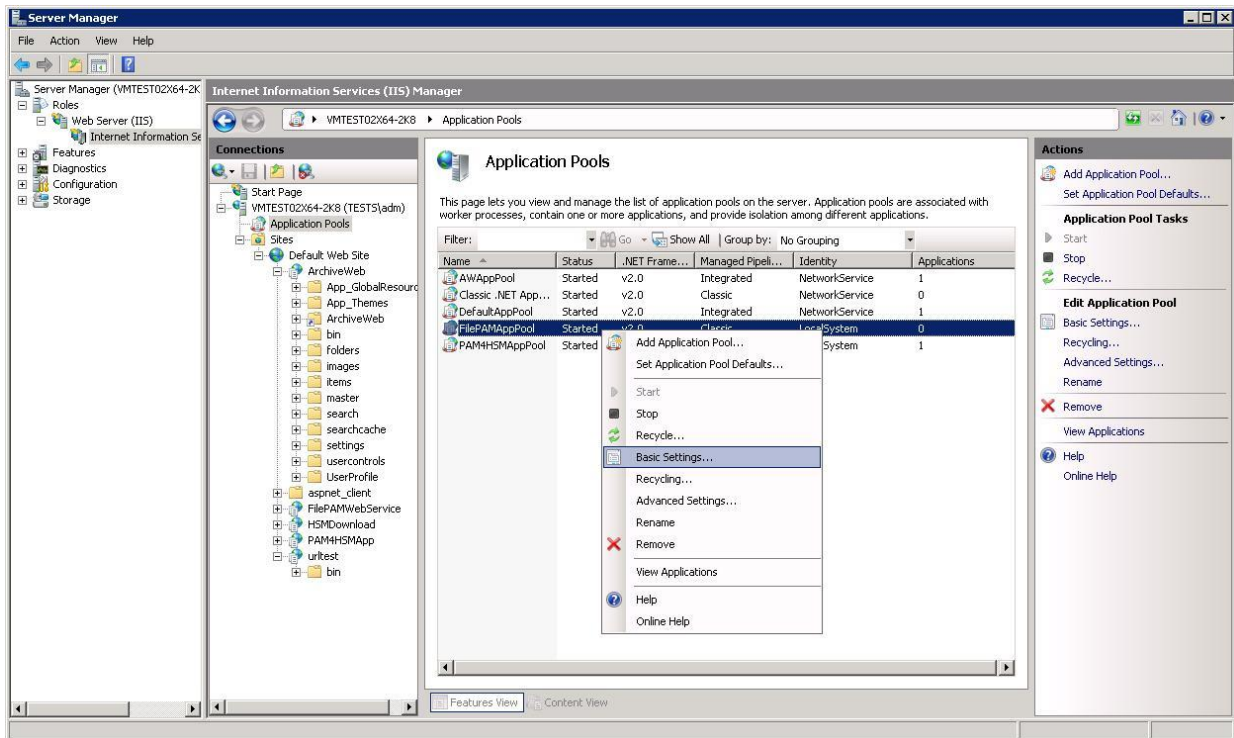
Script engine – unchecked

Verify that file exists - unchecked



In case of IIS7 environment on the Archive Manager server, the following additional steps are required:

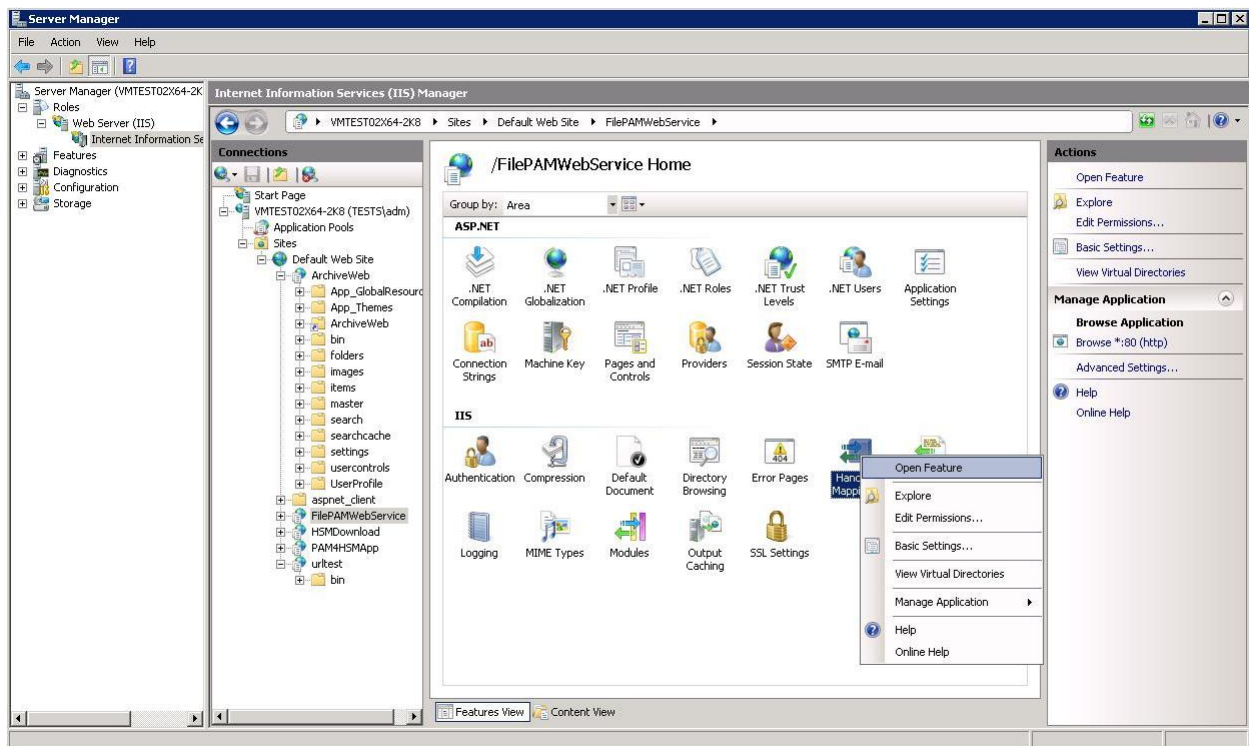
1. In the IIS Manager under <ComputerName>/Application Pools find the **FilePAMAppPool**. Right-click it and from the context menu select **Basic Settings**.



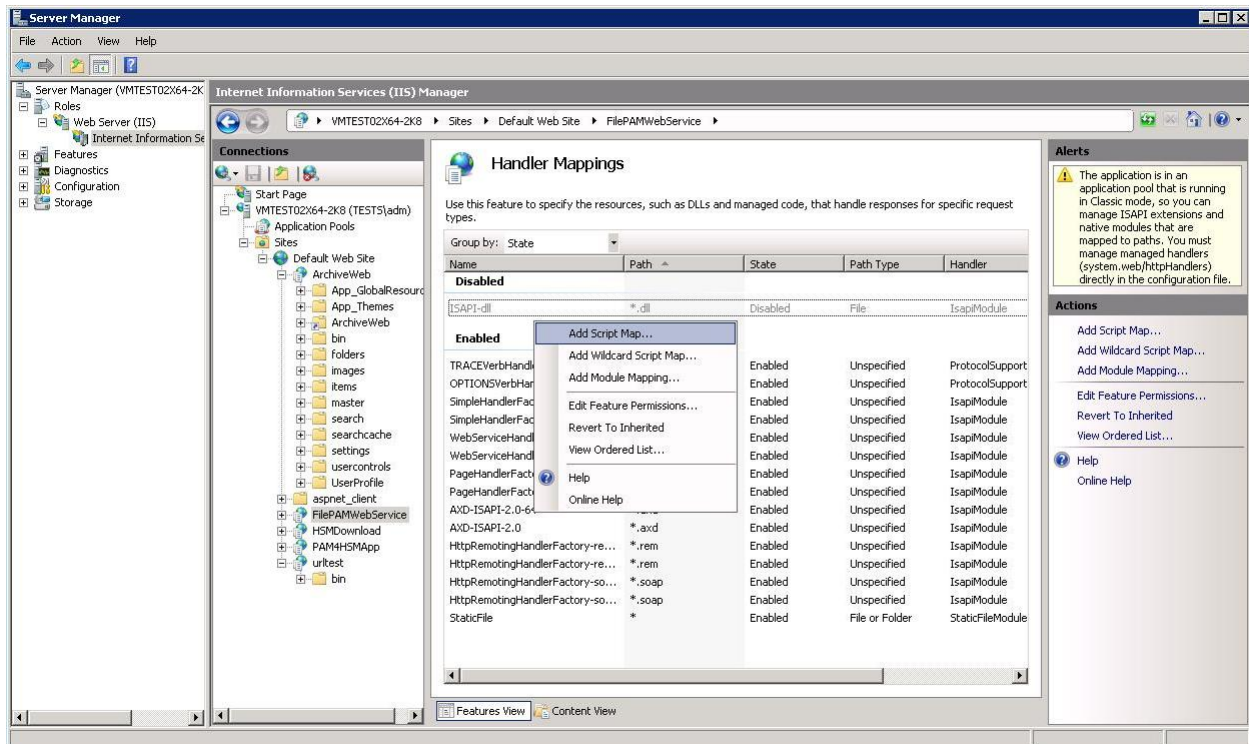
2. In the pop-up window change the pipeline mode to “Classic”. Click **OK**.



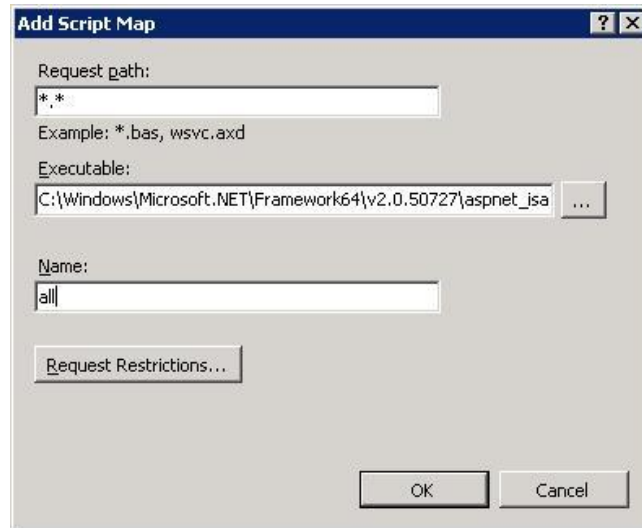
3. Back in the IIS Manager locate the <ComputerName>/Sites/Default Web Site/**FilePAMWebService**. Open the **Handler mappings** in the FilePAMWebService



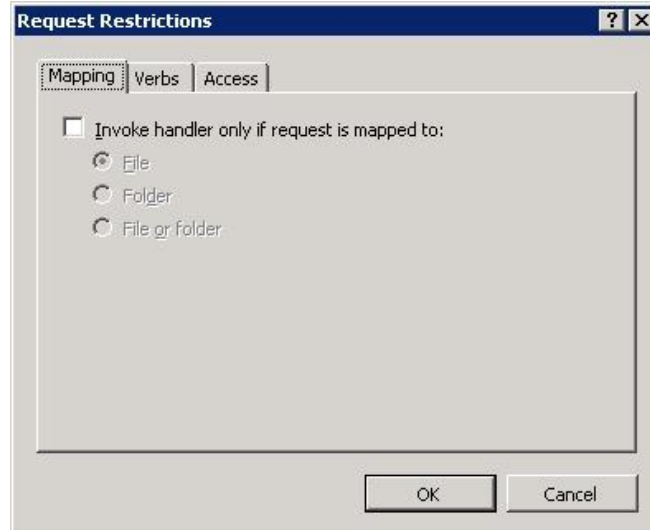
4. Right-click inside the main pane and select **Add Script Map** from the context menu.



5. In the pop-up window set the new mapping properties:
 - a. Request path: *.*
 - b. Execute path: [PATH TO .NET FRAMEWORK]\aspnet_isapi.dll
 - c. Name: allTo continue click **Request Restrictions**.



- C. In the **Request Restriction** dialog the **Invoke handler only if request is mapped** checkbox must be unchecked.



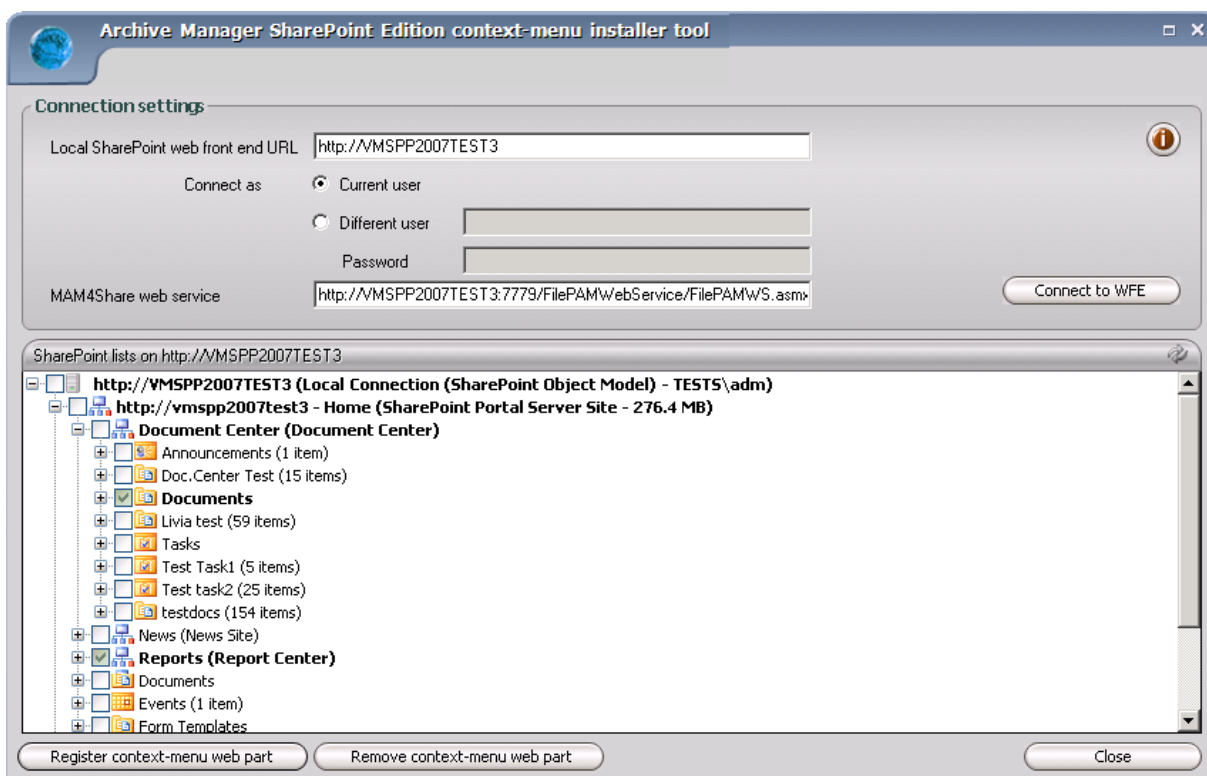
6. Click **OK** to save the new mapping.
7. Restart the application pool.

Context menu deployment

Archive Manager SharePoint Edition context menu in SharePoint Portal is an optional feature of Archive Manager. When deployed, users are allowed to archive/restore documents directly in SharePoint user interface. The tool has to be started on the SharePoint web front end. First connect to the local SharePoint server, then you can install/remove the context menu on the selected libraries and lists.

To deploy Archive Manager context menu:

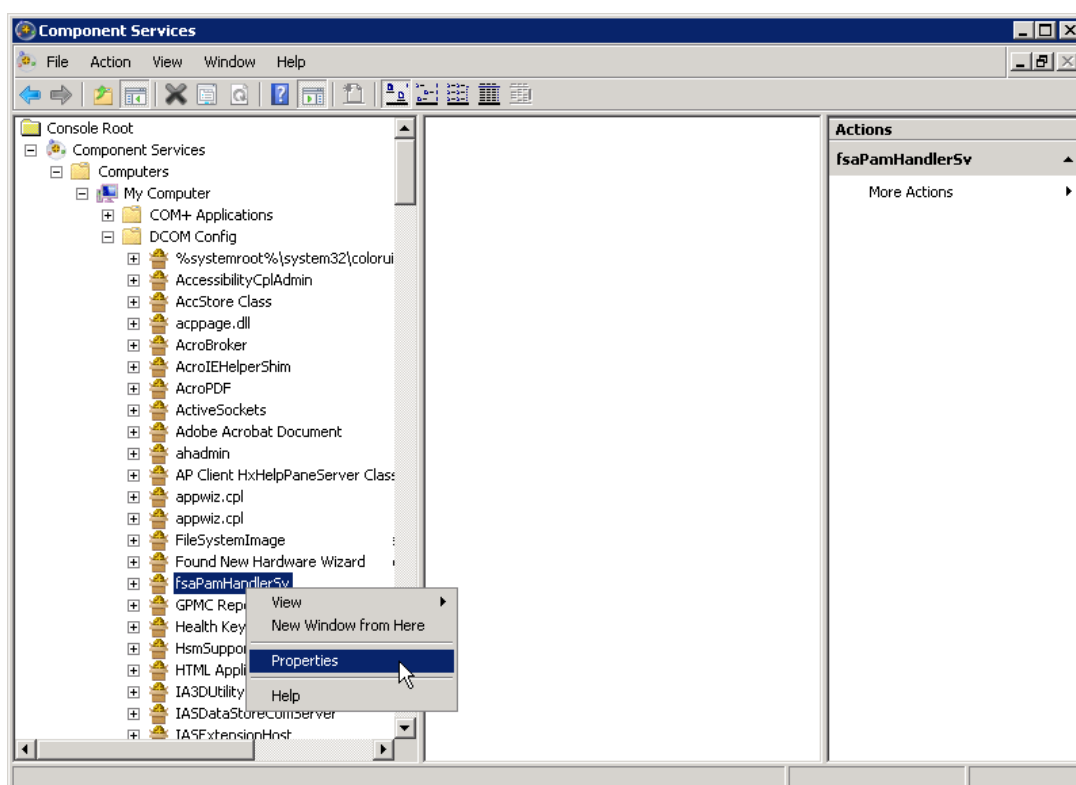
1. Open **Start / All Programs / Metalogix / Archive Manager SharePoint Edition / Archive Manager SharePoint Edition web part installer.**
2. Click **Connect to WFE.**
3. Your SharePoint lists will be displayed in the list view. Unfold the tree. Check the libraries and lists for which you want to install the context menu.
NOTE: Double-click for recursive selection.
4. Then click **Register context-menu web parts.**



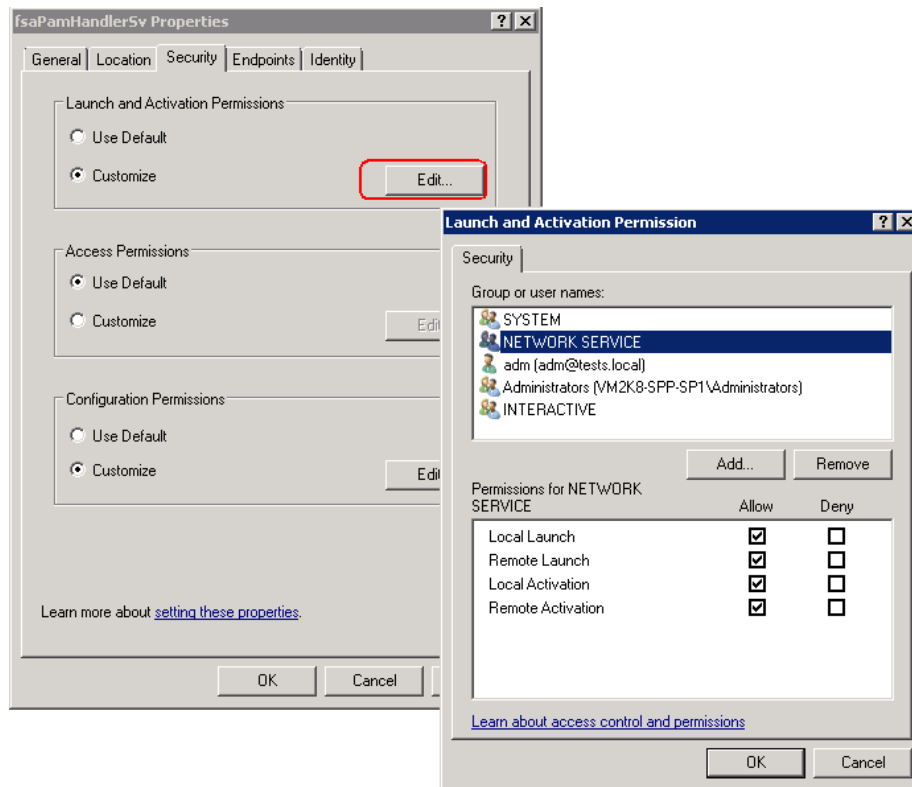
Troubleshooting – auto-retrieve not working

Ensure that the Application pool user for the SharePoint web sites in IIS has the necessary DCOM rights for the *fsaPamHandlerSv* object. This user is usually the Network Service. The DCOM settings should be configured the following way:

1. Run **Component Services** (click **Start /Settings /Control Panel /Administrative Tools /Component Services**).
2. Expand the tree down to **Component services / Computers / My Computer / DCOM Config**. Locate the **FsaPamHandlerSv**, right-click it and select **Properties**.



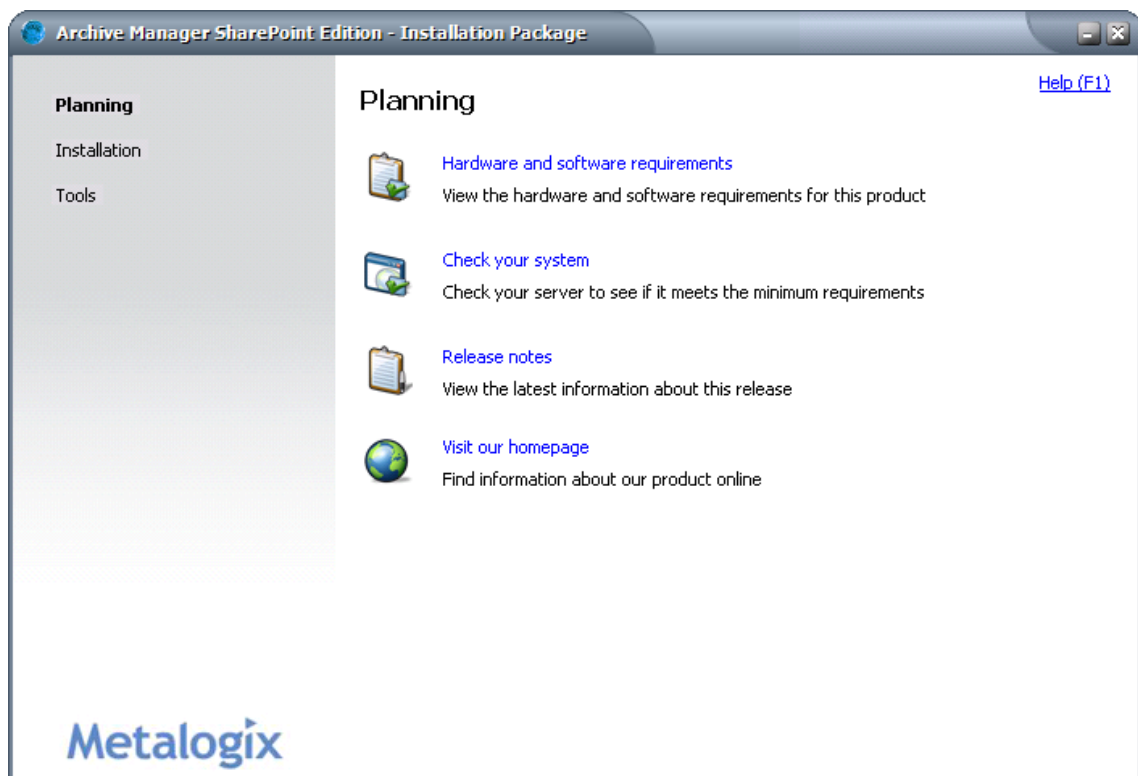
3. In the **Properties** window switch to the **Security** tab. In the **Launch and Activation Permissions** section click **Edit**. In the pop-up dialog add the **NETWORK SERVICE** and make sure that all permissions (Local/Remote Launch, Local/Remote Activation) are allowed for the **NETWORK SERVICES**. Finally click **OK**.



Planning and Tools tab

The **Planning** tab contains links to prerequisites and product information:

- Hardware and software requirements – opens prerequisites document
- Check your system – detects if IIS, MDAC, database and MS SharePoint are available; however, only the MS SharePoint is necessary, database can be installed by the wizard
- Release notes for the Archive Manager SharePoint Edition version being installed
- Link to our homepage



From the **Tools** tab you can launch:

- Configuration tool which allows you to configure Archive Manager SharePoint Edition and HSM databases

