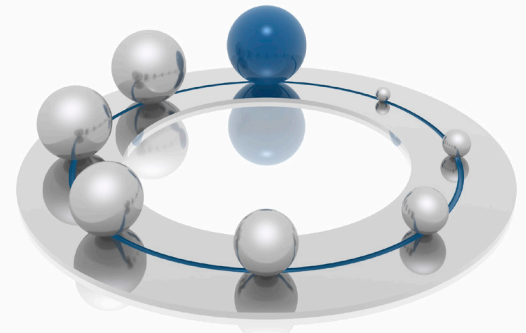


Metalogix Migration Manager for SharePoint – Documentum Edition

Consolidate Documentum Content to SharePoint



Metalogix Migration Manager for SharePoint - Documentum Edition simplifies Documentum content migration to SharePoint. Documentum objects can be migrated at the item, folder, site level using a lightweight client application that connects to Documentum and SharePoint remotely through supported APIs. Metadata, user data and permissions can all be preserved.

KEY FEATURES

▶ Migrate Content, Versions and Metadata

Metalogix Migration Manager for SharePoint - Documentum Edition enables any scale migration of all Documentum content, including Cabinets, Folders, Calendars and Documents. In addition to the documents themselves, all metadata and Documentum types can be mapped and migrated to SharePoint content types and metadata columns. As with the complete suite of Migration Manager for SharePoint products, all migration operations are simple to define, fully batchable, and comprehensively logged.

▶ Migrate Permissions

Migration Manager for SharePoint - Documentum Edition supports user and permission mapping of Documentum permissions to SharePoint permissions.

▶ Migrate to SharePoint in the Cloud or On-premises

Any flavor of SharePoint 2007 or 2010 is a supported target for Documentum to SharePoint migration with Migration Manager for SharePoint, whether your SharePoint environment is on-premises or in the cloud (SharePoint Online, BPOS or Office 365).

▶ Documentum Reporting

Migration Manager for SharePoint - Documentum Edition includes a powerful reporting and analysis toolset that will help you understand your content and file metadata before you migrate, enabling you to make better decisions about which content to migrate and how.

▶ Pre-Migration Check

Migration Manager for SharePoint - Documentum Edition provides a pre-migration check feature that lets you scan your Documentum environment for content that will not fit seamlessly into SharePoint. The pre-migration check will identify Documentum URLs, content object names and content types that are not compatible with SharePoint. The output of this check provides an actionable set of items that require modification in Documentum before they will translate properly into SharePoint.

▶ Simple Client, Remote Server, No Unnecessary Dependencies

Metalogix knows that your SharePoint server technology stack is complex enough. The last thing your organization needs is to introduce new and unnecessary technology dependencies for a migration product. Migration Manager for SharePoint is a fast, simple and lightweight client install that depends only on Microsoft .Net. The client connects to Documentum remotely using the powerful Documentum Foundation Services (DFS) API. Communications with SharePoint are typically made remotely over SharePoint web services, the SharePoint Client Object Model or using the Metalogix SharePoint Extensions Web Service. Direct interaction with the SharePoint object model is possible in those rare cases where it makes sense to install the Migration Manager for SharePoint client directly on the SharePoint server.

▶ Work Remotely

Do all the heavy lifting for your Documentum-to-SharePoint migration from the convenience of any client machine. Metalogix Migration Manager for SharePoint - Documentum Edition connects to any SharePoint site or Documentum server that you can access with your browser—even those outside your organization's intranet.

BUSINESS BENEFITS

- Reduce costs by consolidating content in SharePoint
- Migrate to SharePoint 2010 and leverage all the SharePoint features with your content
- Retain valuable metadata and versions

IT BENEFITS

- Pre-migration check
- Support for SharePoint Online
- Work remotely
- Uses only Microsoft supported APIs

SUPPORTED SOURCE SYSTEMS

- Documentum version 6 and above

SUPPORTED OPERATING SYSTEMS

Migration Manager for SharePoint - Documentum Edition can be installed on:

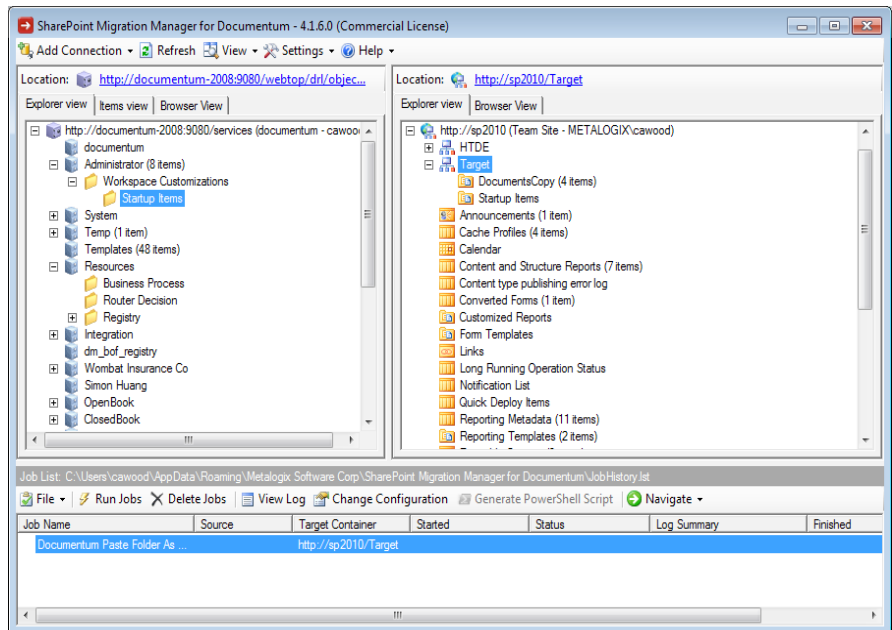
- Windows XP
- Windows Vista
- Windows 7
- Windows Server 2003
- Windows Server 2008 (32-bit or 64-bit editions)

▶ Batch Your Work

Batch all migration operations for convenience and re-run them at any time. Run your migrations at night and view the resulting migration logs in the morning.

▶ Compliant

All migration activity is done through the supported SharePoint and Documentum APIs. There are no un-supported direct writes to the SharePoint or Documentum databases.



Migration Manager for Documentum simplifies Documentum content migration to SharePoint. Documentum objects can be migrated at the item, folder or cabinet level and all using a lightweight client application that connects to Documentum and SharePoint remotely through supported APIs. Metadata, user data and permissions can all be preserved.