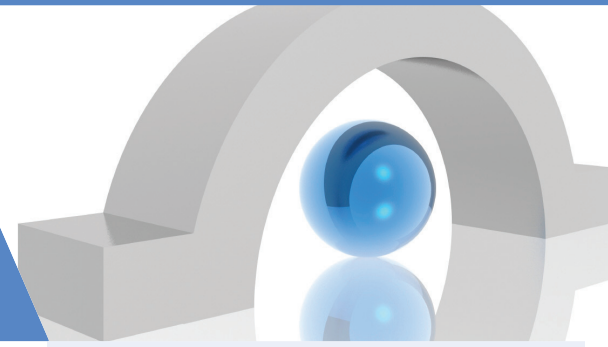


## Metalogix Migration Manager for SharePoint - Blogs and Wikis Edition

Migrate Blog and Wiki Content to SharePoint 2007 and 2010



Metalogix Migration Manager for Microsoft SharePoint® - Blogs and Wikis Edition enables organizations to rapidly migrate content from popular blog platforms to SharePoint 2007 and 2010. Take full advantage of the social computing capabilities of SharePoint 2007 and 2010. Metalogix Migration Manager for SharePoint - Blogs and Wikis Edition is an easy-to-use and convenient way to move content on popular blog and wiki platforms to SharePoint 2007 and SharePoint 2010. With its familiar copy-and-paste-style user interface, it lets you quickly migrate pages, posts, comments, attachments and categories between servers. Migration Manager for SharePoint - Blogs and Wikis Edition makes it easier to create and find content in improved blogs (both simple and enterprise).

### KEY FEATURES

#### ▶ Easy to Use

Similar to the Windows File Explorer, Metalogix Migration Manager for SharePoint - Blogs and Wikis Edition has a familiar, tree-based, copy-and-paste-style user interface. Users can migrate content with just a few clicks.

#### ▶ Preserve Important Wiki Content and Settings

Migration Manager for SharePoint - Blogs and Wikis Edition preserve wiki pages, posts, comments, attachments, and categories with support for versioning and permissions.

#### ▶ Enhanced Support for SharePoint Blogs

When migrating a blog from SharePoint 2007, Metalogix Migration Manager for SharePoint - Blogs and Wikis Edition preserves version histories and user permissions.

#### ▶ Take Full Advantage of SharePoint 2010 Enterprise Wikis

Migrate existing wiki sites to the SharePoint 2010 Enterprise Wiki template and take full advantage of the powerful publishing, search and metadata management options that SharePoint 2010 has to offer.

#### ▶ Intelligent Link Management

Migration Manager for SharePoint - Blogs and Wikis Edition includes intelligent link management to ensure links in posts and pages are automatically updated during the migration process. No need for hours of manual updating!

#### ▶ Connect to Multiple Sites

Connect to multiple SharePoint servers and source blogs and wikis, for easy consolidation or distribution of your blog content.

#### ▶ Work Remotely

Do all the heavy lifting for your blog migration from the convenience of your own machine. Migration Manager for SharePoint - Blogs and Wikis Edition connects to any Blog, Wiki or SharePoint site that you can access with your browser—even those outside your organization's intranet.

#### ▶ Batch Your Work

Multiple blog and wiki migration operations can be batched for convenience and re-run at any time. Schedule nightly migrations to push content from a public blog or wiki to SharePoint.

### BUSINESS BENEFITS

- Rapidly transition from the most popular blog and wiki platforms to take full advantage of SharePoint 2010 social computing features.
- Preserve important content including pages, posts, comments, attachments and categories with support for versioning and permissions.
- Centralize enterprise content in SharePoint 2010 and maximize information worker productivity while reducing IT complexity.

### FEATURES

- Preserve wiki content and settings
- Enhanced support for SharePoint blogs
- Fully leverage Enterprise Wikis in SharePoint 2010
- Intelligent link management
- All migration activity is performed through supported Microsoft APIs

## SUPPORTED SOURCE SYSTEMS

### Blogs

- Google Blogger
- Wordpress
- Movable Type
- Telligent
- Any blog system that supports either the Metaweblog standard or RSS

### Wikis

- Atlassian Confluence
- Media Wiki
- xWiki

### ▶ Compliant

Migration is performed through the supported SharePoint, Blog and Wiki APIs to assure compliance and data integrity. There are no unsupported, direct writes to the SharePoint database. This ensures Microsoft support agreements are not voided.

### ▶ Deploys Simply and Quickly

Takes only minutes to install and requires only the .Net Framework (Version 2.0). No dedicated server is required.