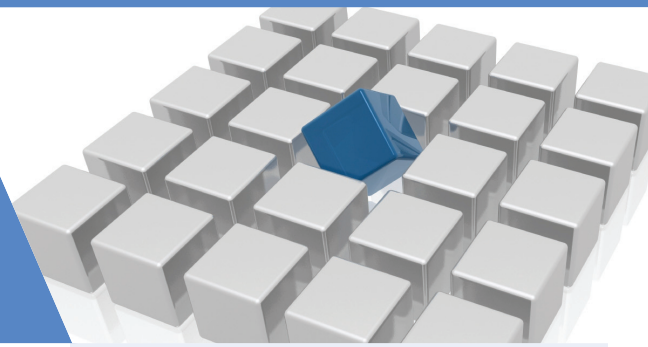


Metalogix Migration Manager for SharePoint

Easily reorganize SharePoint and migrate to SharePoint 2010



Whether you are migrating between Microsoft SharePoint® servers, upgrading from SharePoint 2003 or 2007 to SharePoint 2010, or re-organizing your SharePoint content, Metalogix Migration Manager for SharePoint is an easy-to-use and convenient way of moving your SharePoint data. With its familiar copy-and-paste-style user interface, you can quickly migrate SharePoint sites, libraries, lists, web parts and permissions between servers, while preserving metadata and document versions. It also lets you reorganize and re-template sites, lists and libraries during the process. With deep PowerShell integration in Migration Manager, SharePoint administrators can script and automate migration and content management tasks for complete automation. Because it uses only fully-supported Microsoft methodologies and APIs, it does not affect Microsoft support agreements.

KEY FEATURES

▶ Fastest Full Fidelity Migration

Migration Manager for SharePoint gives you the flexibility to maximize the potential of your hardware. Using sophisticated performance improvements, the latest version of Migration Manager for SharePoint will scale up performance as you increase the available resources.

▶ Workflow Support

Migration Manager for SharePoint supports migrating out of the box, SharePoint Designer, and Nintex workflows.

▶ Gain Control of SharePoint

Undo the damage of SharePoint sprawl. Migration Manager for SharePoint can help you quickly reorganize your SharePoint content, making it easier for your end users to find and access the content they need.

▶ Conveniently Work From Your Desktop

Do all the heavy lifting for your SharePoint migration from the convenience of your own machine. Metalogix Migration Manager for SharePoint is a .NET client application that connects to any SharePoint site that you can access with your browser — even those hosted in the cloud or outside your organization.

▶ Save Time Using PowerShell Scripts

Access and extend Metalogix Migration Manager for SharePoint's capabilities via PowerShell commandlets to script and automate migration tasks. Batch multiple list migration operations for convenience and re-run at any time. Run your migrations at night and view the results/logs in the morning. Once a job is created, generate a PowerShell script with one-click of your mouse to customize or schedule jobs along with other admin processes.

▶ Compare and Report on SharePoint Data

Compare data between environments or between SharePoint versions easily, with Metalogix Migration Manager for SharePoint's powerful differential reporting capabilities. Compare content between a live site and QA, or between a backup file and the live SharePoint site, to instantly see what has been added, modified or deleted.

▶ Preserve Application Compliance

Run migration activity through the supported SharePoint APIs. There are no unsupported, direct writes to the SharePoint database.

KEY BENEFITS

• Performance

Migration Manager for SharePoint offers unmatched migration speed.

• Streamline migration process using visual user-friendly interface

Empower end users and administrators to move their content at the item, list, site or site collection level. Preserve permissions, versions, views and metadata.

• Upgrade from SharePoint 2003 and SharePoint 2007 to SharePoint 2010

Upgrade directly from WSSv2, SharePoint Portal Server 2003, WSSv3, MOSS 2007, SharePoint Foundation, or SharePoint 2010 using Microsoft supported APIs.

Re-define your site structure during migration. Split sites and site collections into multiple targets and re-template sites. Administrators and content owners can define which content is migrated and when it is best to migrate that content. Re-template your sites (e.g., Convert 2007 wiki sites to SharePoint 2010 wiki sites.).

• Support complex migration scenarios with rich support for Windows PowerShell scripting

Support complex migration scenarios with custom business logic via PowerShell. Customize your migration tasks to achieve even the most sophisticated and complex use cases.

NEW IN THIS VERSION

- Significant performance improvements
- Nintex workflows
- PowerShell integration

SUPPORTED SOURCE SYSTEMS

- SharePoint Portal Server (SPS) 2003
- Windows SharePoint Services (WSS) v2
- Microsoft Office SharePoint Server (MOSS) 2007
- Windows SharePoint Services (WSS) v3
- SharePoint Server 2010
- SharePoint Foundation 2010
- SharePoint Online [a.k.a. Office 365, BPOS, or hosted SharePoint] Standard versions — for Dedicated versions, please see Metalogix Migration Manager for SharePoint — Dedicated Cloud Edition

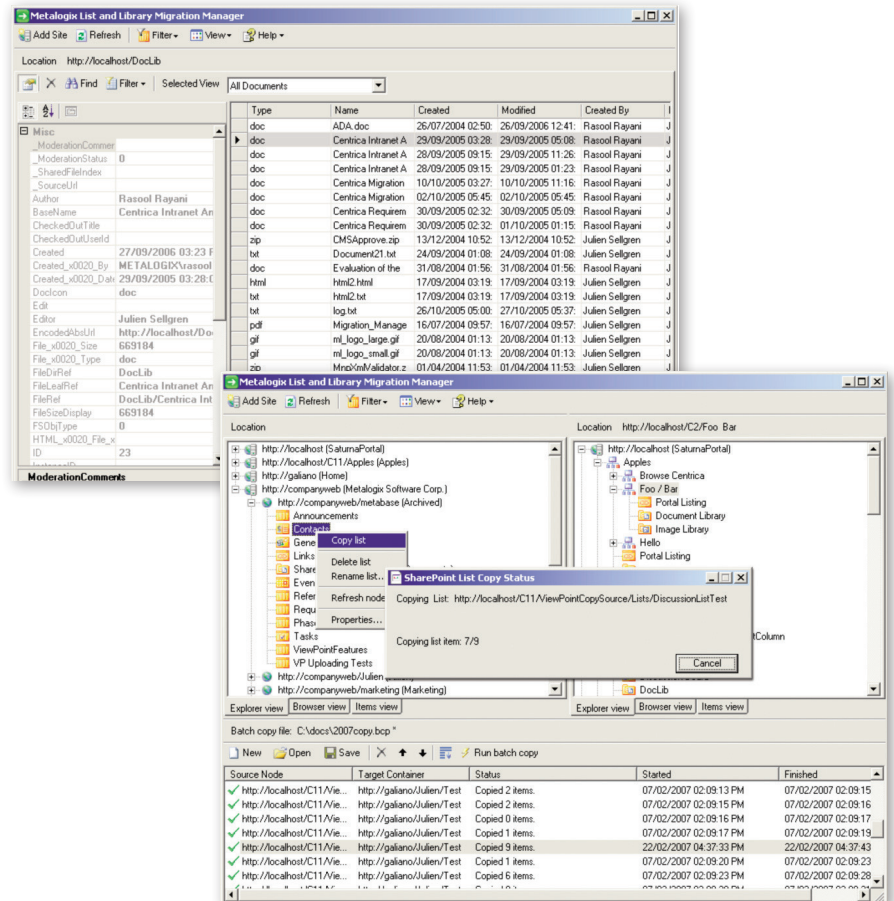
► Distribute the Workload

Metalogix Migration Manager for SharePoint is a security-trimmed client application, so you can allow all levels of users (administrators, consultants, and content owners) to migrate and manage data. Migration project managers can delegate and distribute work effort across the organization to individual departments or content owners reducing IT workload, enhancing project buy-in for the new target system, and facilitating decision-making for content re-organization. Organizations can manage a distributed workload because Migration Manager reads and writes only to the supported SharePoint APIs, so content is always secure and supported!

► Deploys Simply and Quickly

Takes only minutes to install and requires only the .Net Framework (Version 2.0). No dedicated server is required.

► Tree-based, Copy & Paste-Style User Interfaces



Save time and work-effort using Incremental jobs to migrate just what you need.