

Metalogix Selective Restore Manager for SharePoint

Simplify The Restore Process for SharePoint and Respond Faster to Restore Requests

Metalogix Selective Restore Manager is a simple, cost-effective solution that allows you to rapidly search, find and granularly restore SharePoint content from the item level up to a site collection and everything in between. You can restore content from native SQL Server backups quickly without the overhead of a lengthy SharePoint recovery farm setup. Selective Restore Manager allows you to avoid costly proprietary SharePoint backup products and be prepared to restore your lost or deleted content using a simple, intuitive user interface.

KEY FEATURES

▶ Easy to Use

Selective Restore Manager for SharePoint has a familiar, tree-based, copy-and-paste-style user interface that is similar to the Windows File Explorer. It's so simple you can perform granular restore operations easily within minutes.

▶ Connect Directly to Native SQL Backup Files

Selective Restore Manager for SharePoint works seamlessly with your native SharePoint SQL Server back-up files. You don't need to use a proprietary back-up format, or rely on expensive third-party backup solutions, to restore granular items.

▶ Restore Individual Items Up to a Site Collection

In one simple step Selective Restore Manager restores everything from an individual document or list item, up to and including site collections, from a native SQL Server backup file. Restore documents and items directly to the original production environment, or to a new location within any live SharePoint server on your network.

▶ Respond Faster to Restore Requests

Use Selective Restore Manager for SharePoint to open and browse existing SQL Server backup files easily, as though they were live SharePoint sites. You can restore the needed content directly to the production environment without a temporary SharePoint recovery farm.

▶ Retain Valuable Metadata

Selective Restore Manager for SharePoint preserves views, version chains, metadata, permissions, and authorship information ('Created,' 'Modified,' 'Created By,' and 'Modified By' fields) when performing recovery operations.

▶ Preview Content Prior to Restore

Selective Restore Manager for SharePoint allows you to preview documents and save them to your local disk directly from your SharePoint backups.

▶ Run a Differential Report on Your Backup Files

Speed up the process of reviewing backed-up data, with Selective Restore Manager for SharePoint's powerful differential reports. You can see instantly what has been added, modified or deleted by comparing content between two backup files, or between a backup file and the live SharePoint site.

▶ Microsoft API-Compliant

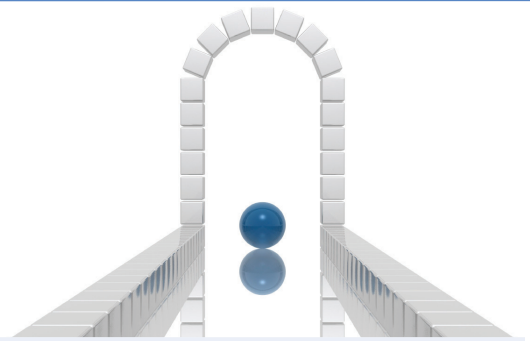
Selective Restore Manager for SharePoint performs all restore operations through the supported SharePoint APIs. There are no un-supported, direct writes to any SharePoint database. This ensures Microsoft support agreements are not voided.

BUSINESS BENEFITS

- Respond to restore requests in seconds
- Avoid costly proprietary backup formats
- Eliminate the hardware costs of a dedicated restore farm
- Uses only approved Microsoft APIs - won't void Microsoft SharePoint support agreements

FEATURES

- Restores individual items, site collections and everything in between
- Restores in place or out of place
- Retains valuable metadata
- Connects directly to native SQL backup files
- Uses only Microsoft APIs
- Lets you preview content prior to restore
- Runs differential reports on backup files
- Easy to use
- Simple to deploy



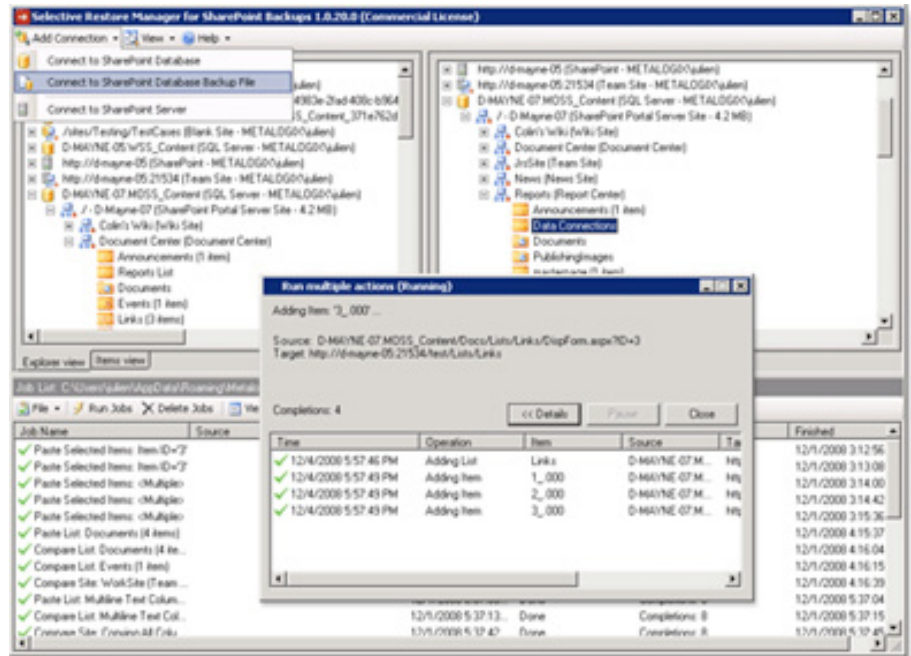
NEW IN THIS VERSION

Selective Restore Manager 5.0 includes the following new features:

- Performance improvements: make the most of the hardware you have dedicated to the restore operations
- Ability to restore SharePoint workflows

SUPPORTED SOURCE SYSTEMS

- SQL Server 2000, 2005, and 2008 SharePoint database backups (both full and incremental)
- SQL Server 2000, 2005, and 2008 SharePoint databases
- SharePoint/WSS V2 or V3 full backups, created from Central Admin, STSADM, or SQL Server (both full and incremental)
- Database snapshots created from Microsoft Data Protection Manager



Metalogix Selective Restore Manager for SharePoint restores individual documents and list items without a SharePoint recovery farm. That saves time and money — and makes you far more productive.