

# Validating URL length when migrating eRoom content to SharePoint

---

September 2011

**Metalogix**

Copyright © 2011 Metalogix International GmbH. All rights reserved. Metalogix is a trademark of Metalogix International GmbH. StoragePoint is a registered trademark of BlueThread Technologies, Inc. Microsoft, Exchange Server, Microsoft Office, SharePoint, and SQL Server are registered trademarks of Microsoft Corporation.

**Contents**

Background ..... 4

The Process ..... 4

About Metalogix ..... 7

## Background

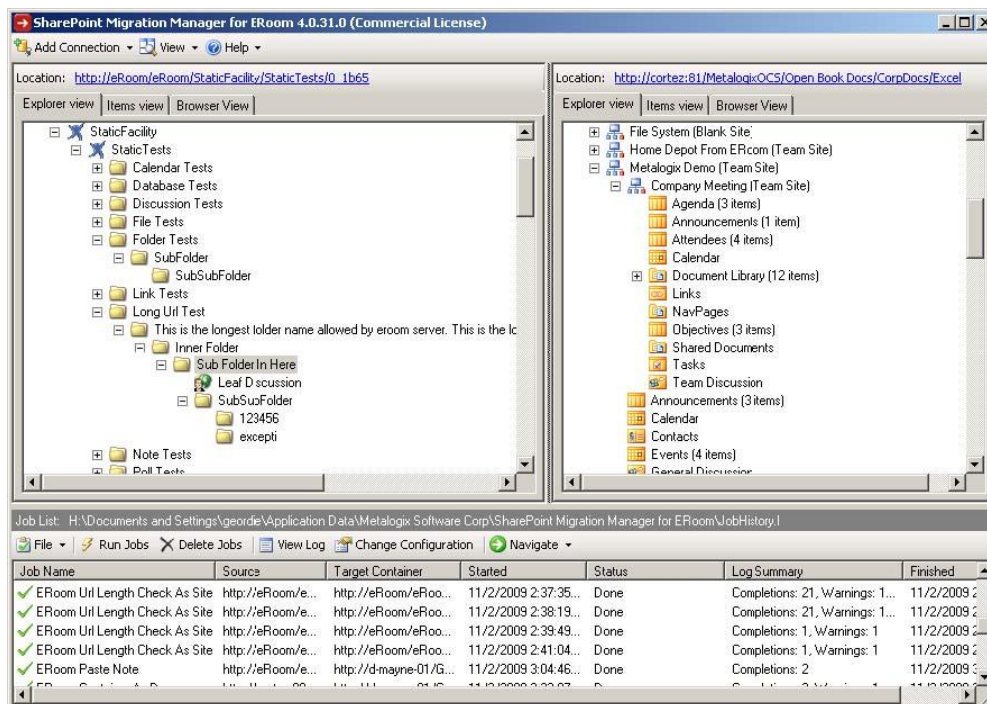
One of the challenges in migrating eRoom content to SharePoint is overcoming URL length limitations for Sites and Document Libraries in SharePoint.

- In eRoom, each item is identified by a URL with an item ID. In other words, the URL length is not affected by the depth of the item within the eRoom hierarchy.
- In SharePoint, URLs are based on site hierarchy. This difference creates a situation where deeply nested eRoom items that are migrated to equivalent SharePoint hierarchies can produce invalid SharePoint URLs.

Migration Manager for SharePoint - eRoom Edition addresses this issue by identifying which eRoom items will cause invalid SharePoint URLs before actually migrating any content to SharePoint. This document describes the simple process that Migration Manager for SharePoint - eRoom Edition uses to identify and remediate items in eRoom that will create excessively long URLs in SharePoint.

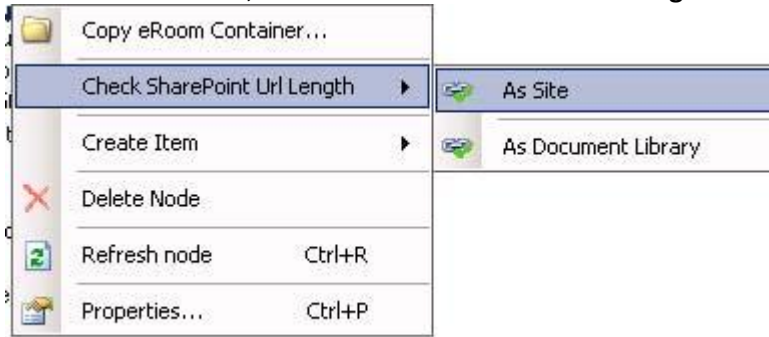
## The Process

1. After connecting to an eRoom site in Migration Manager for SharePoint – eRoom Edition, navigate to the eRoom container you want to validate.



2. Right-click on the eRoom container or item that you wish to check for excessive SharePoint URL length. This will bring up the context menu.

3. In the context menu, choose **Check SharePoint URL Length**



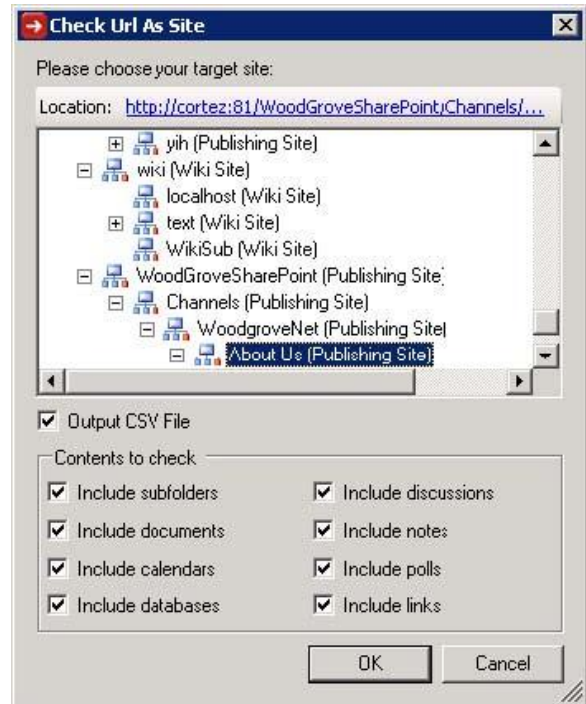
4. You will see two sub-options for checking URL length: **As Site** and **As Document Library**. These two options exist because the URL limits for SharePoint sites and SharePoint document libraries are slightly different.

Choose the SharePoint container type (Site or Document Library) to which you want the selected eRoom node to be migrated. If the target is a SharePoint site, for example, select the **As Site** sub-option. This will bring up the **Check Url as Site** configuration dialog.

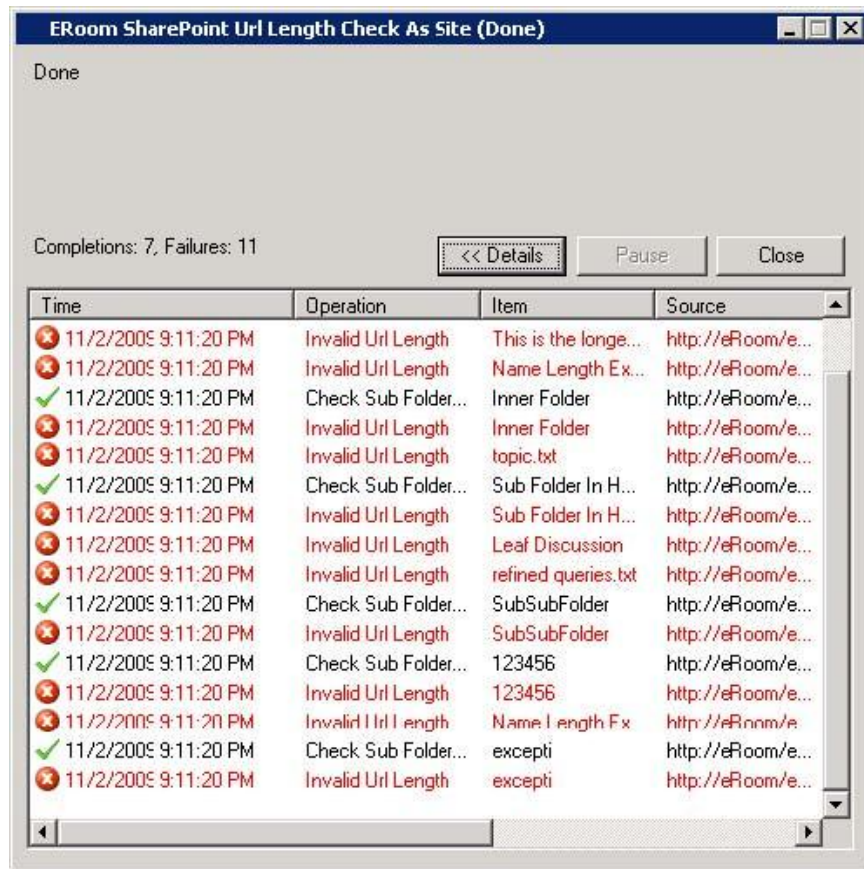
5. In the configuration dialog, select the target SharePoint location to which the eRoom node you selected will eventually be copied. This SharePoint location will determine the base URL length to which the eRoom node URLs will be appended. Thus it determines the overall length limit for the URL.

This dialog box also provides options that allow you to select the eRoom container and item types for which to check the URL validity. You may also choose to export to a CSV file the information about all URLs that will be too long in SharePoint. This CSV file will help you facilitate remediation.

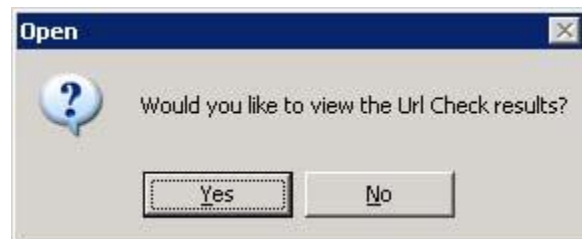
Click **OK** to run the URL length checker.



6. Either during or after checking the URL length, click the **Details** button on the status dialog to see a list of eRoom items whose URLs are too long for the target SharePoint node:



7. Check the **Output to CSV File** option, you to see the output in the default CSV viewer (usually Excel) after the URL checking action is complete. Click **Yes** to see the results.
8. The CSV file will list only the eRoom items with URLs that are too long for the target SharePoint container. The CSV file displays the following columns for each eRoom item:



**Source Name:** The name of the item in eRoom

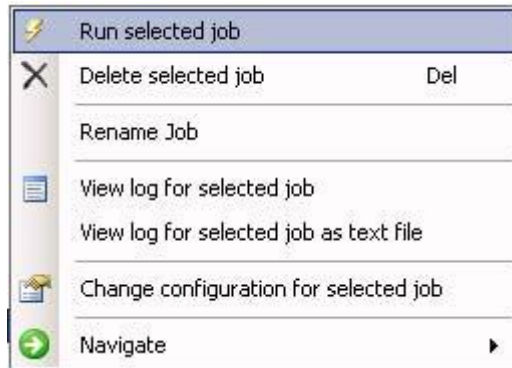
**Source URL:** The eRoom URL of the item

**Expected SharePoint URL:** The expected URL of the item in SharePoint, if it is migrated to the selected target

**SharePoint URL Length:** The length of the expected URL in SharePoint

**Excess Length:** The number of characters by which the SharePoint URL exceeds the maximum allowed by SharePoint

9. After remediating the content in eRoom, you can re-run the URL length-checking action simply by selecting the previous execution in the job view of Migration Manager for SharePoint - eRoom Edition. Then choose **Run Selected Job**:



In this way, you and your migration team are empowered to identify and act on eRoom content items that will create SharePoint URLs of invalid length. The appropriate remediation action will depend on the environment, but standard remediation actions include:

- Flattening the eRoom hierarchy and migrating eRoom nodes to a shallower location in the SharePoint hierarchy
- Deleting unused eRoom content that exists deep in the hierarchy
- Renaming eRoom containers so that they produce shorter URLs in SharePoint

For more information, please contact [sales@metalogix.com](mailto:sales@metalogix.com) or [support@metalogix.com](mailto:support@metalogix.com).

## About Metalogix

[Metalogix](#) Software Inc. is a leading provider of content lifecycle management solutions for Microsoft SharePoint®, Microsoft Exchange®, and legacy enterprise content environments. We enable organizations to scale and cost-effectively manage, migrate, store, archive and protect enterprise content whether on-premise or in the cloud. The company is a Microsoft Gold Certified Partner, privately held, and backed by Insight Venture Partners and Bessemer Venture Partners.