



Metalogix

Expert

Installation Guide

Publication Date: March, 2017

Copyright

Copyright © Metalogix International GmbH 2017

All rights reserved. No part or section of the contents of this material may be reproduced or transmitted in any form or by any means without the written permission of Metalogix International GmbH.

Metalogix Expert™ is a trademarks of Metalogix International GmbH.

Windows SharePoint Services is either a registered trademark or a trademark of Microsoft Corporation in the United States and/or other countries. Other product and company names mentioned herein may be the trademarks of their respective owners.

Technical Support

Metalogix Expert is a free product and support is not included. For more on support for Metalogix Expert, please see [our policy on Metalogix Expert](#).

The level of technical support provided for paid products depends upon the support package that you have purchased. Contact us to discuss your support requirements.

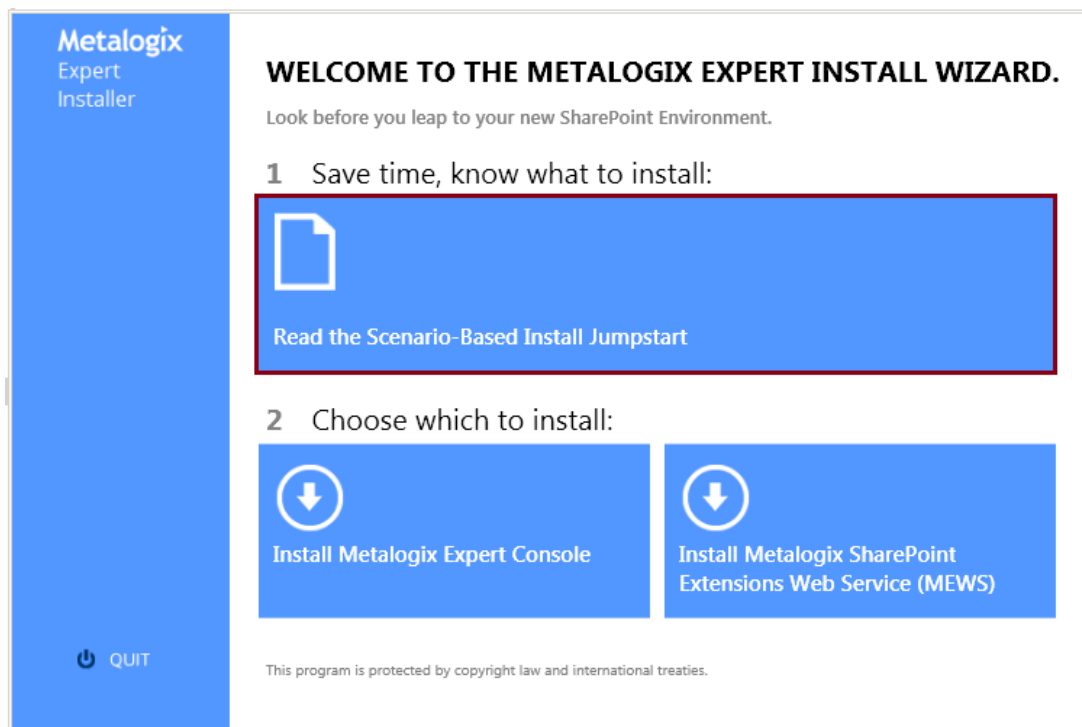
Table of Contents

Table of Contents

Table of Contents	3
Installation Scenarios	4
Running the Metalogix Expert Configuration Wizard	4
Installing Metalogix Expert	4
Installing Metalogix Expert Console	4
Offline Activation	8
Uninstalling Metalogix Expert Console	11
Installing Metalogix Expert SharePoint WSPs	13
Uninstalling Metalogix Expert SharePoint WSPs	14

Installation Scenarios

There are various installation scenarios for Metalogix Expert. Your specific scenario will determine whether you need to install the Metalogix SharePoint Extensions Web Service (MEWS). See the [Scenario-Based Install Jumpstart](#), available in the Metalogix Expert installer, for more details.



Running the Metalogix Expert Configuration Wizard

The Metalogix Expert Wizard will assist you in installing Metalogix Expert on your computer. Based on the installation option you choose, you can either run the Metalogix Expert Console installation, or the installation of Metalogix SharePoint Extensions Web Service (MEWS). Please note that you must install MEWS in order to have full functionality of farm analysis, without MEWS you will only be able to fully analyze site collections.

Installing Metalogix Expert

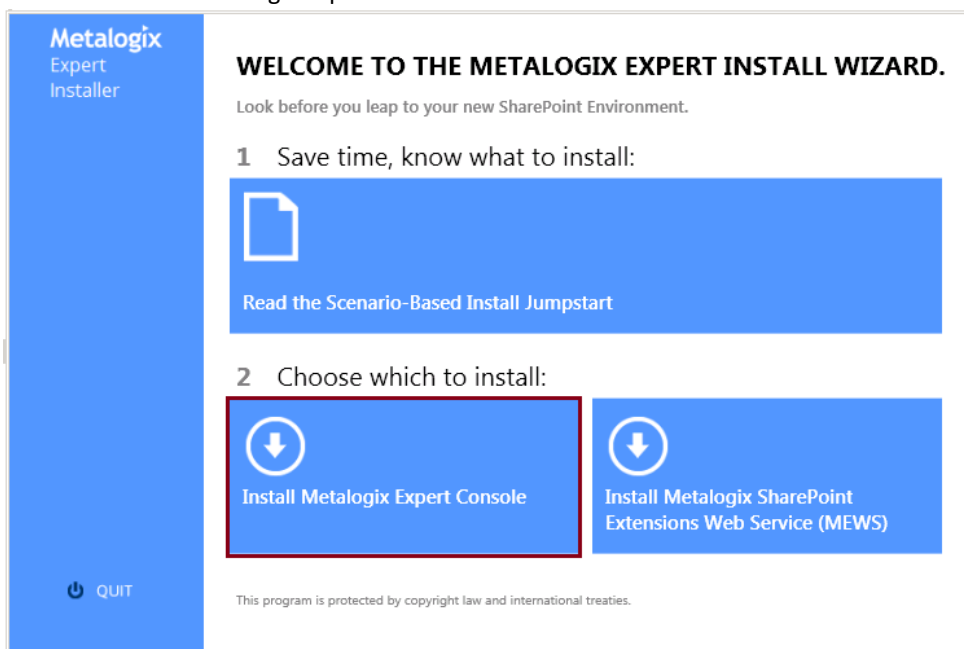
To install Metalogix Expert files:

1. From the directory where you extracted the installer, run **Metalogix Expert** to start the setup process.
2. At the welcome screen select whether you would like to view install guide or whether you would like to begin installing Metalogix Expert Console, or Metalogix Expert Extensions Web Service (MEWS).

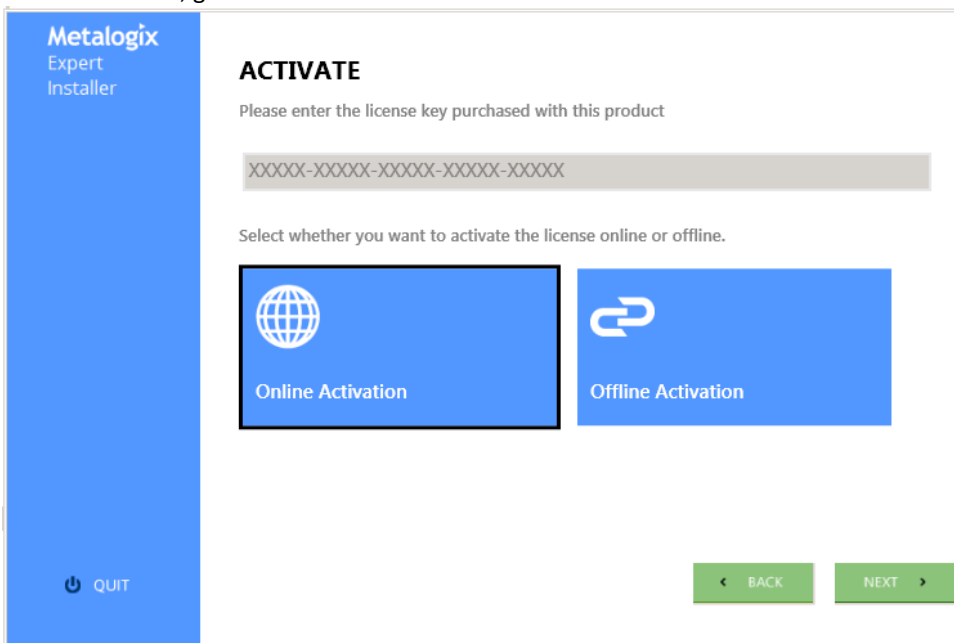
Installing Metalogix Expert Console

Follow these steps to successfully install Metalogix Expert Console:

1. Select Install Metalogix Expert Console on the first screen of the install wizard.

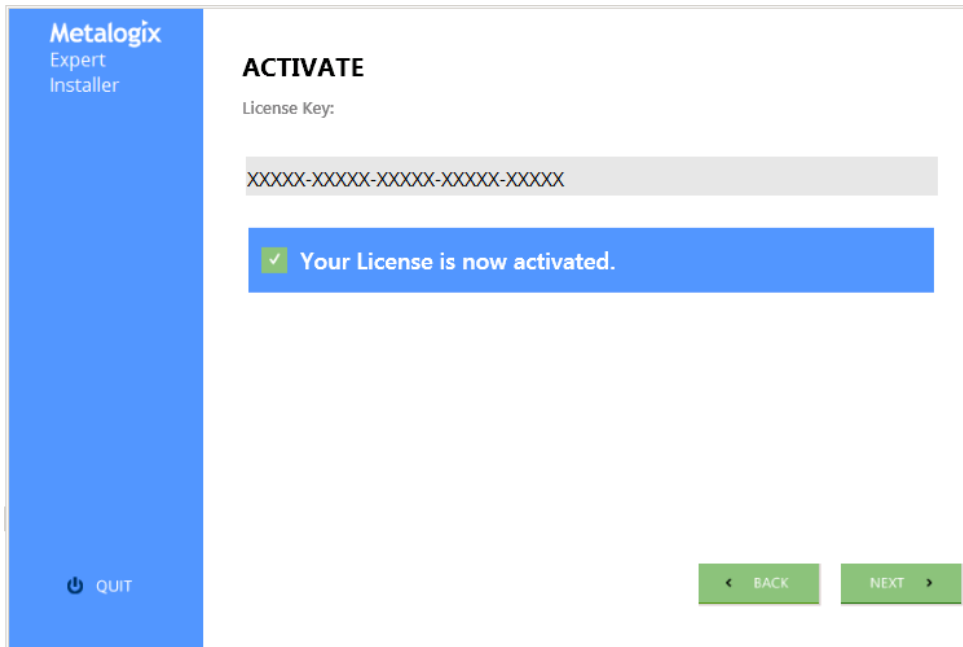


2. Enter a valid license key, and select whether you would like to activate it online or offline. Go to step 3 for online activation, go to the Offline Activation section for Offline Activation instructions.



3. Select Activate Online and then click **Next**.

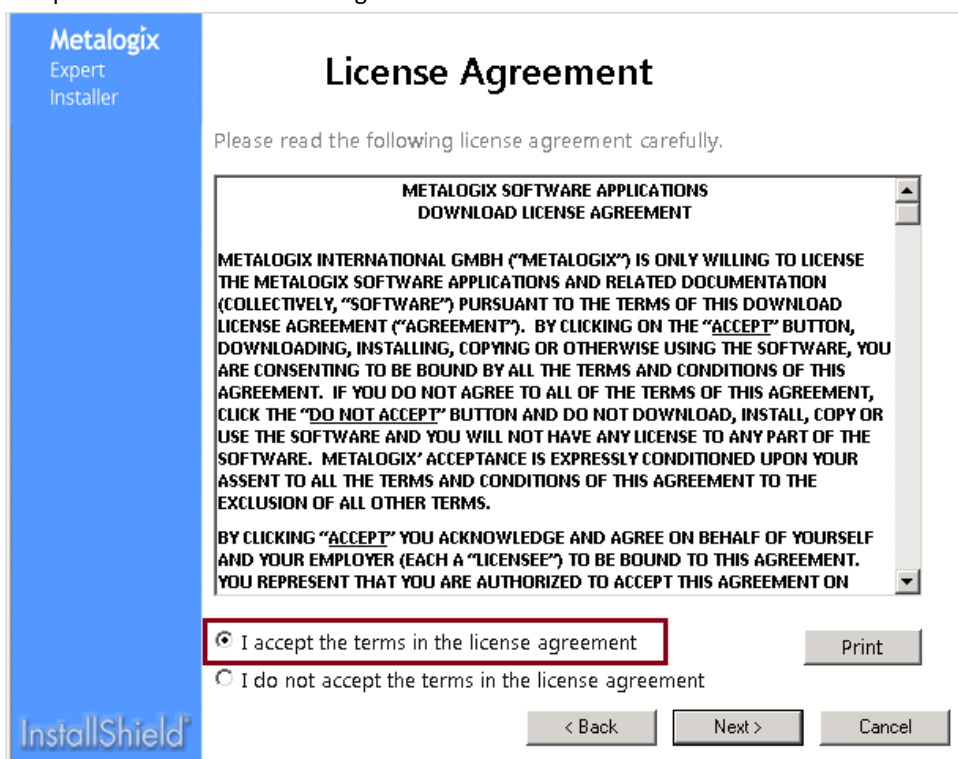
4. You will be notified whether your license key has been activated. Click **Next**.



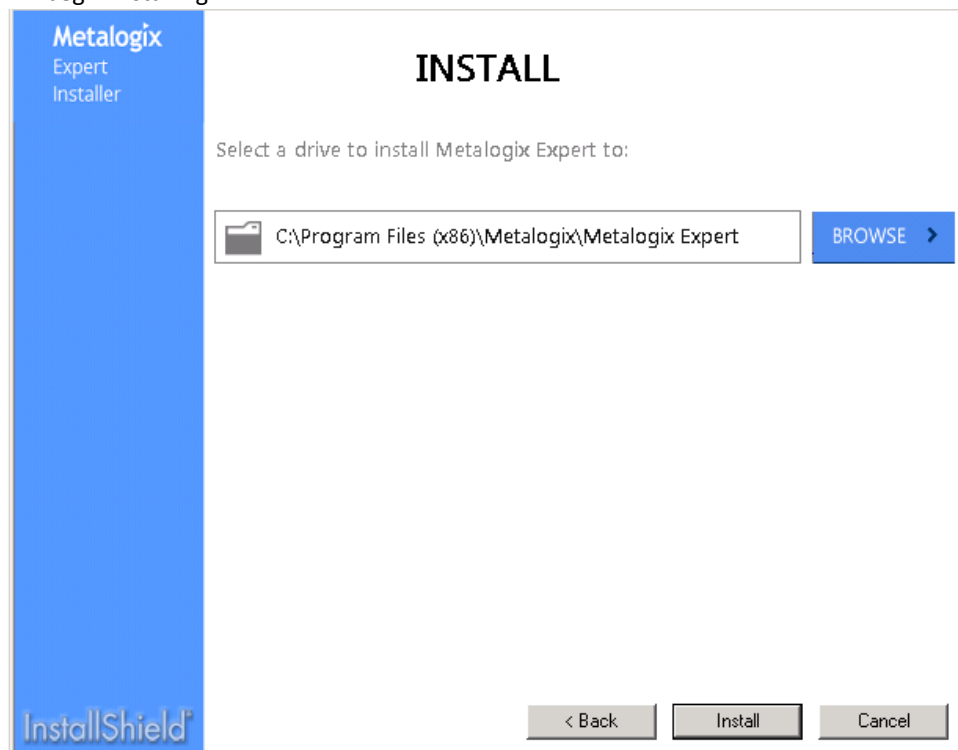
5. On the Install Shield Wizard welcome page, Click **Next**.



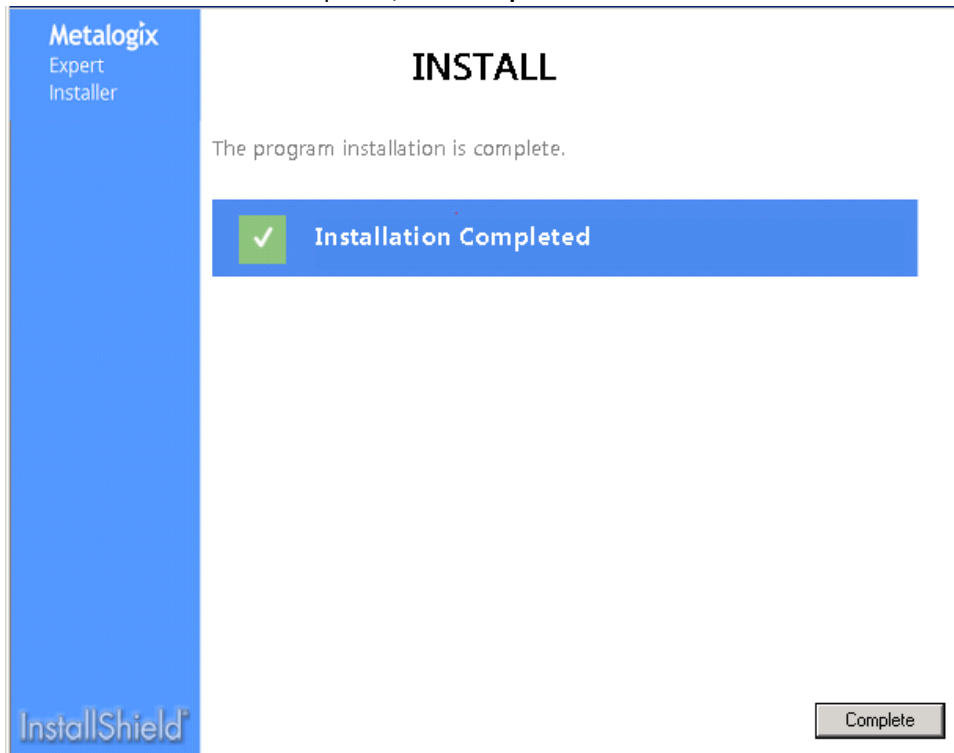
6. Accept the terms in the license agreement and click **Next**.



7. Select the drive on which you would like to install Metalogix Expert. Click **Install**. At this point the program will begin installing.



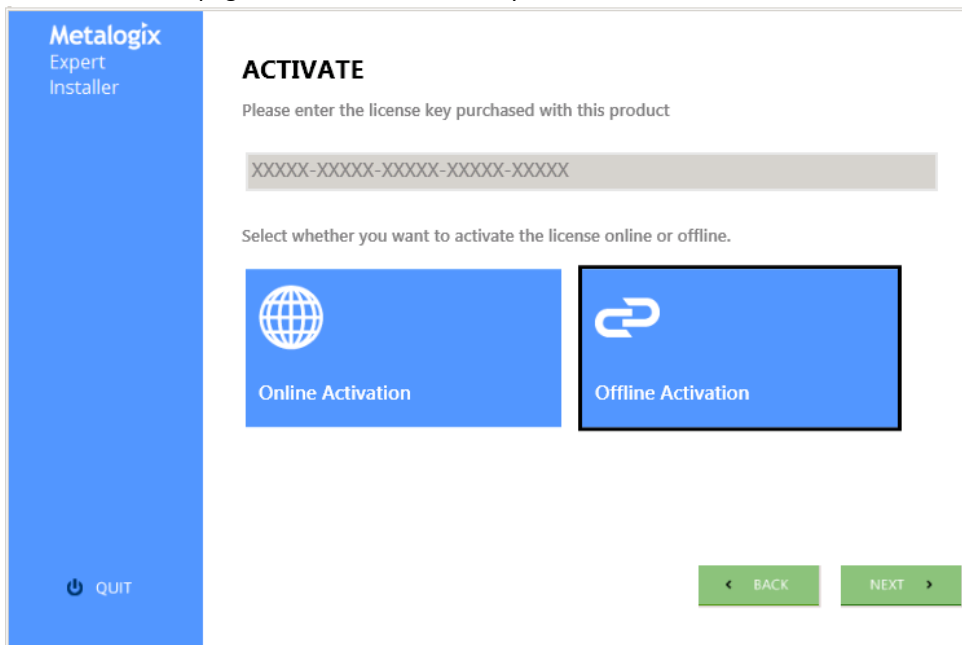
8. Once the installation has completed, click **Complete**.



Offline Activation

To activate the product offline, follow these steps:

1. On the Activation page, enter a valid license key and select **Activate Offline**. Click **Next**.



2. Select whether you would like to copy the activation key to your clipboard or save the key to a file.

Metalogix
Expert
Installer

ACTIVATE

To activate your license offline, follow these steps:

- 1 OR
- 2 Submit the data to Metalogix.com/OfflineActivation for an activation key file.
- 3 Select "Browse" to locate the file.

3. Go to Metalogix.com/OfflineActivation by clicking on the link provided on the above screen. Paste the activation data, or upload the file you saved. Click **Activate**.

Offline Activation

This page serves for activating license keys in an offline mode. Use it in cases you do not have Internet connection available on the server where you have installed the Metalogix product.

The activation process consists of two simple steps. First, paste the Activation Request string you have generated in the Offline Activation Wizard in the product setup or management tool into the 'Activation text' box. If you do not have the Activation request string, but you have generated an Activation file, upload it. Click 'Activate'. Complete the form now to activate your license key.

Enter activation data

Activation text

OR

Upload activation data

Activation file

- Download the activation text file.

Activation Successful.

Copy the Activation Response text into the clipboard or download it as a file. You will have to enter this text (or file) in the Offline Activation Wizard in the product setup or management tool in order to validate your license key. Complete the form now to activate your license key.

Activation text

```
p2Ev+bx3KYOKpoyX5Ssz8y96I9ABE  
9XNCGLkgVhAx7NuiH21WIBpBKyto  
wQt2pleIwj/QzGnjknNyp6gxfiCz  
BiMF0YPWkVLuUzS7Hiyd12qS3MFw  
o55qHdomuMMJWMqhBvXAlE5dA24Z
```

[Download file](#)

- Upload the file into the wizard. Click **Activate**.

Metalogix
Expert
Installer

ACTIVATE

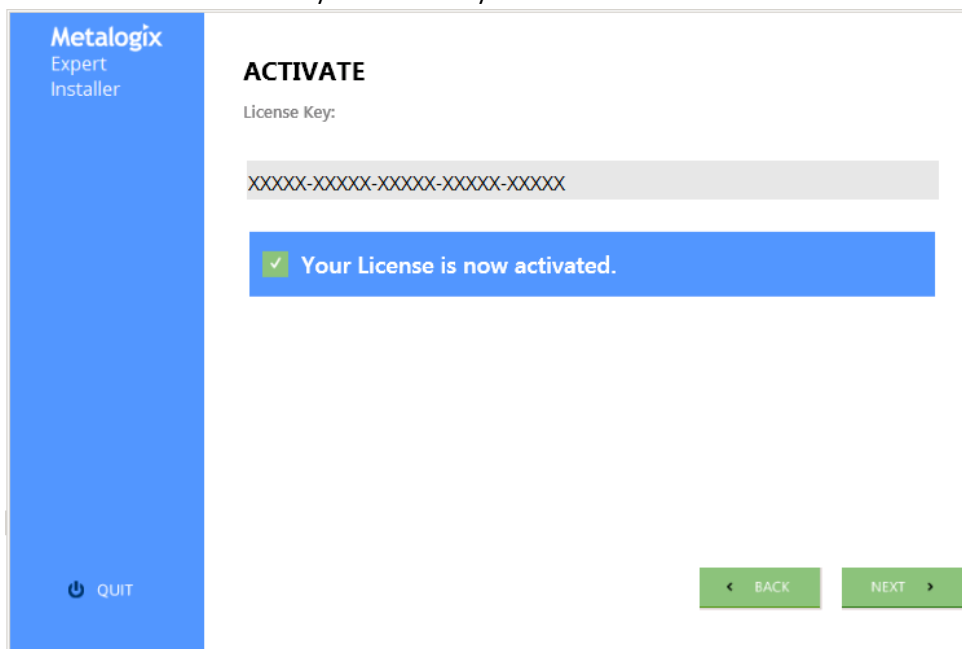
To activate your license offline, follow these steps:

- [COPY KEY TO CLIPBOARD >](#) OR [SAVE KEY TO FILE >](#)
- Submit the data to Metalogix.com/OfflineActivation for an activation key file.

Select "Browse" to locate the file.
- [BROWSE >](#)

[QUIT](#) [BACK](#) [ACTIVATE >](#)

6. You will be notified whether your license key has been activated. Click **Next**.



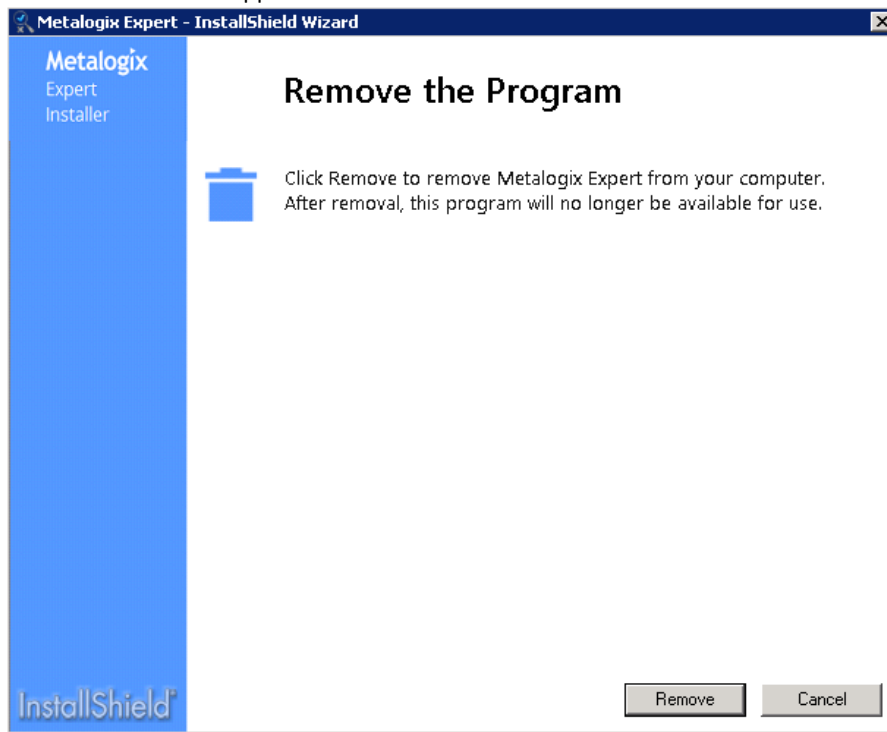
7. Offline activation is completed. Continue with installation.

Uninstalling Metalogix Expert Console

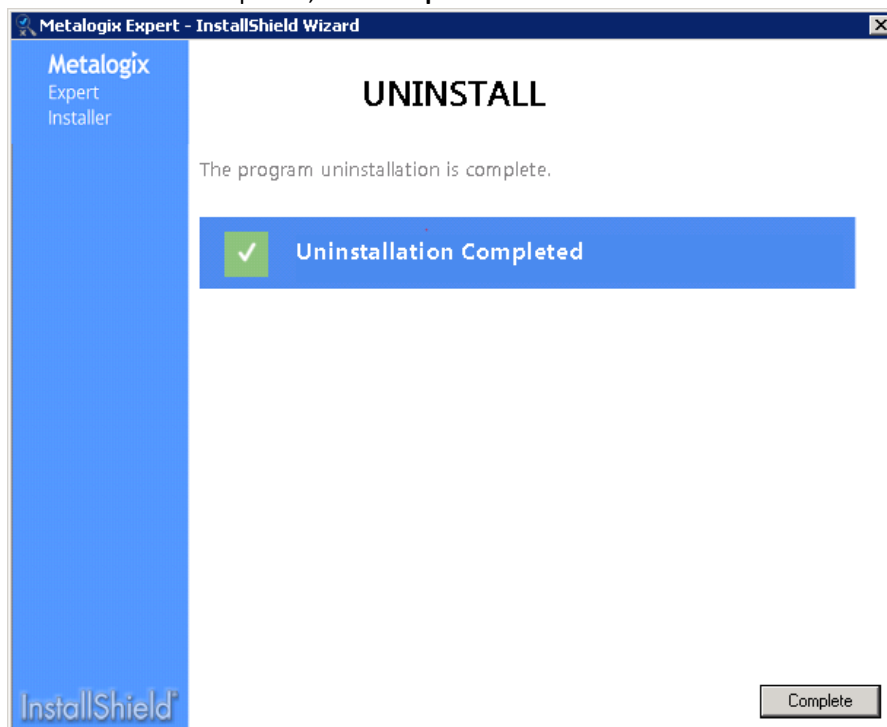
In order to uninstall Metalogix Expert follow these steps:

1. Start the uninstall application using one of the following methods:
 - (Windows Server 2008) In Control Panel, under Programs, open Programs and Features.
 - (Windows Server 2012) In Control Panel, under Programs, open Programs and Features.
2. Select Metalogix Expert in the list of programs, and select **uninstall**.

- An uninstall wizard will appear. Select **Remove**.



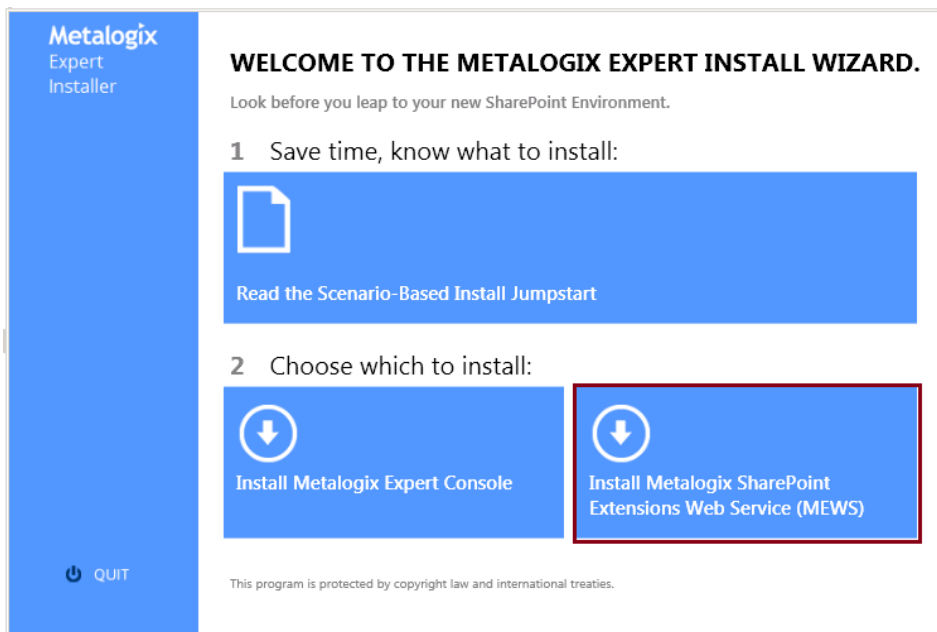
- Once uninstall has completed, click **Complete**.



Installing Metalogix Expert SharePoint WSPs

Follow these steps to successfully install Metalogix Expert SharePoint WSPs:

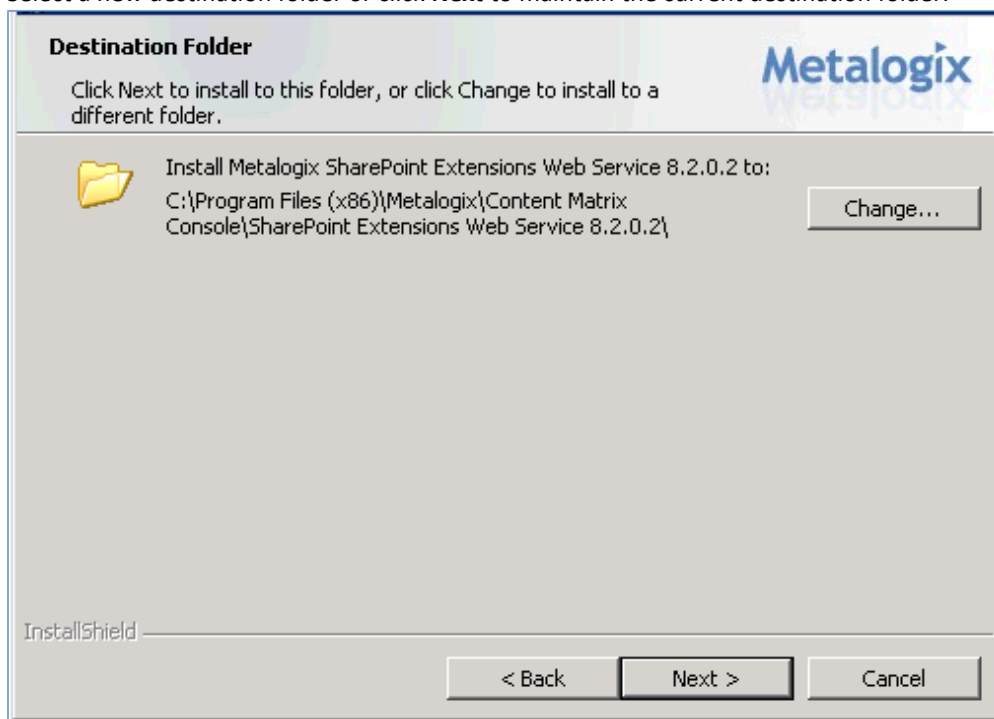
1. Select Install Metalogix SharePoint Extensions Web Service (MEWS) on the first screen of the install wizard.



2. Click **Next** on the welcome screen.
3. Agree with the terms of the license agreement and click **Next**.



4. Select a new destination folder or click **Next** to maintain the current destination folder.



5. Click **Install** to begin the installation.
6. Once the installation has completed, click **Finish**.

Uninstalling Metalogix Expert SharePoint WSPs

In order to uninstall Metalogix SharePoint Extensions Web Service (MEWS) follow these steps:

5. Start the uninstall application using one of the following methods:
 - (Windows Server 2008) In Control Panel, under Programs, open Programs and Features.
 - (Windows Server 2012) In Control Panel, under Programs, open Programs and Features.
6. Select Metalogix SharePoint Extensions Web Service (MEWS) in the list of programs, and select **uninstall**.